



GREATER FLINT HEALTH COALITION



Funding Genesee County Peer Recovery Coach Initiatives

Kelly Ainsworth
Senior Program Director
Greater Flint Health Coalition
kainsworth@flint.org

Genesee County Substance Use Vulnerability Index

Michigan
Report Section

Overdose Data to Action Dashboard

Home

Explore Data

Vulnerability Index

Helpful Tips

Technical Notes

Frequently Asked Questions

Data Notes
Deaths and ED Visits represent all drug overdoses. EMS Responses represent probable opioid overdoses only. Due to the differences in how frequently each data source is updated, the time period shown may vary by indicator.

Michigan Substance Use Vulnerability Index

View MI-SUVI Overview

View County Scorecard

Compare Data Points

Genesee

MI-SUVI

Substance Use Burden

Substance Use Resources

Social Vulnerability

2022 MI-SUVI Scorecard: Genesee County

MI-SUVI Rank
7

Genesee County is the 7th most vulnerable county (out of 83) in Michigan with regards to substance use, with a MI-SUVI score worse than the county average.

Burden Rank
1

Genesee County ranks 1st in substance use burden in Michigan, with a composite burden score worse than the county average.

Resources Rank
75

Genesee County ranks 75th in substance use resources in Michigan, with a composite resource score better than the county average.

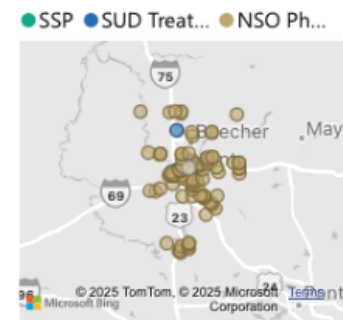
Social Vuln. Rank
13

Genesee County ranks 13th in social vulnerability in Michigan, with a composite social vulnerability score worse than the county average.

See map for substance use resources in Genesee: scroll to zoom and hover over a point to see the name and address of the resource. See bar chart to see how Genesee compares to other counties in MI-SUVI score/metrics.

MI-SUVI and component scores are **Z-scores**. Hover over the info button to the left for an explanation of Z-scores.

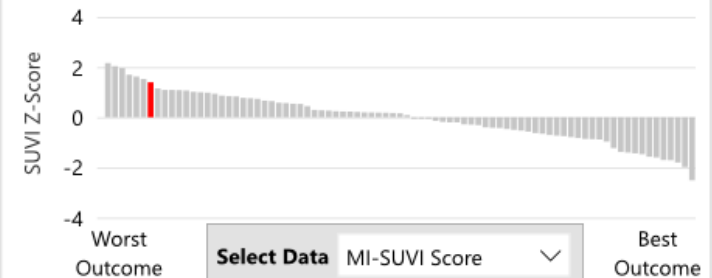
Find Key SUD Resources in Genesee County



Resource

+	SSP	✓
+	SUD Treatment	✓
+	NSO Pharmacy	✓
+	Quick Response Teams	✓
+	Drug Courts	✓

MI-SUVI Score by County, Genesee Highlighted

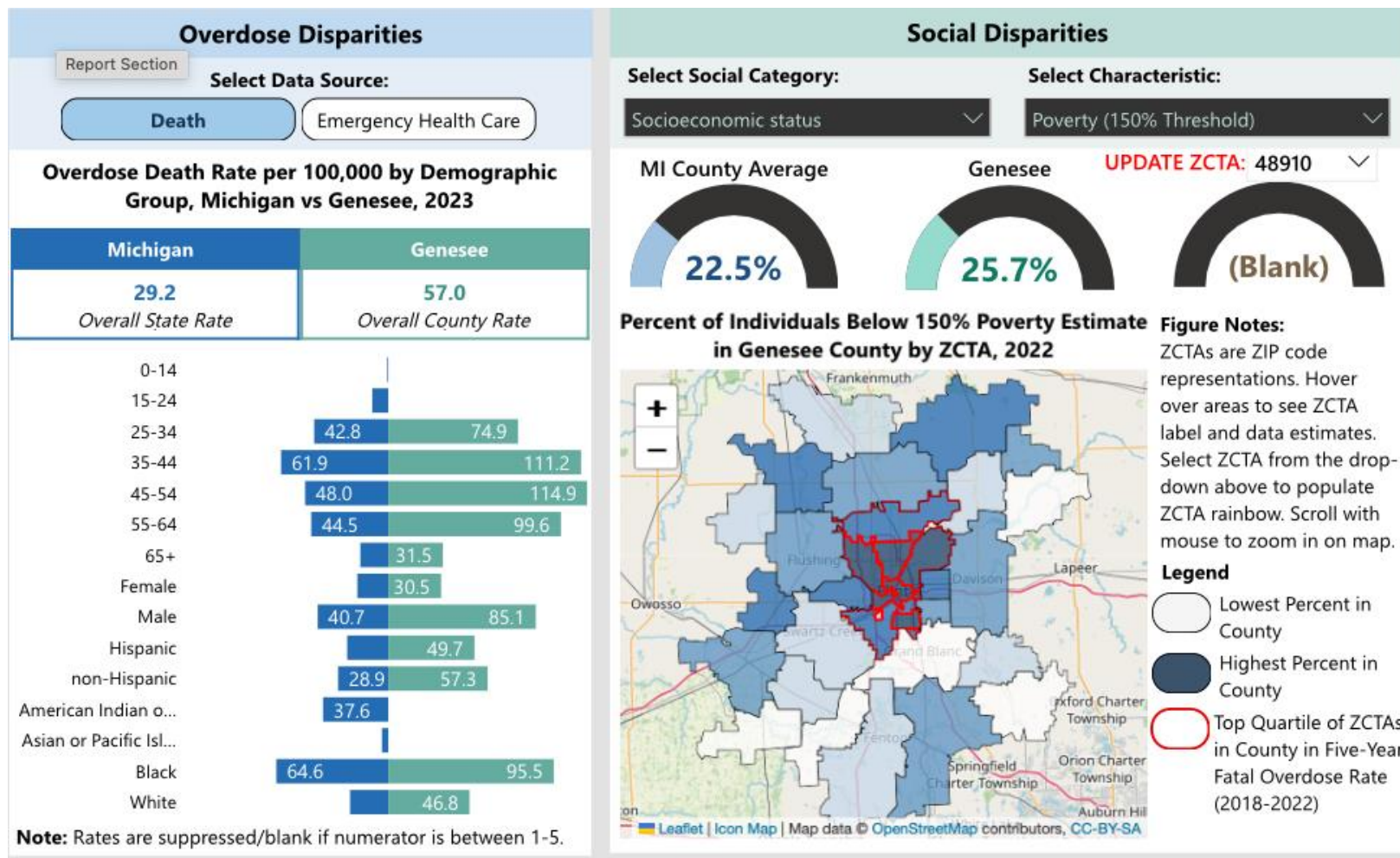


For more detailed information on the development and methodology of the MI-SUVI and included data indicators, please reference the [MI-SUVI documentation](#). An excel document of the MI-SUVI county/ZCTA-level results is available on [Michigan.gov/OpioidsData](#) below this data dashboard.



GREATER FLINT HEALTH COALITION

Genesee County Overdose and Social Disparities



Integrated Approaches to Substance Use & Mental Health in Genesee County

- Over the past 7 years, GFHCs MHSU Task Force has worked to develop and continuously evolve a strong Community-Wide Strategy to Address the Opioid Epidemic and Other Emerging Substance Use Trends, which serves as a multi-sector approach to prevent and reduce overdose among Flint & Genesee County residents.
- MH&SU Core Initiative Program Highlights:
 - Genesee County Quick Response Team (Community-based)
 - Opioid Overdose Recovery Program (Hospital-based)
 - R.I.S.E. (Reach, Inspire, Serve, Empower) Program (Jail-based)
- Collectively, these initiatives focus on expanding our efforts with harm reduction, recovery support, mental health access, and justice-involved support services.



GREATER FLINT
HEALTH COALITION



Opioid Overdose Recovery Program

New Paths, Inc., based in Flint, Michigan, operates the Opioid Overdose Recovery Program (OORP), a 24/7 hospital-based initiative designed to support individuals who have experienced a drug overdose or are under the influence of substances.

Key Features of OORP:

- **Immediate Engagement:** The program deploys Peer Recovery Coaches and Care Coordinators to engage with individuals in hospital emergency rooms, medical clinics, and other community settings following an overdose incident.
- **Holistic Support:** These professionals assist individuals in connecting to services that address various social determinants of health, ensuring a comprehensive support system beyond immediate medical care
- **Community Referrals:** Referrals to the program are made by medical personnel within all three Genesee County hospital systems (Hurley, McLaren, and Ascension/Henry Ford)
- **OORP annually serves an estimated 1,200 unique individuals**



Genesee County Quick Response Team

**Established in 2020, GCQRT
is Genesee County's only
24/7 SUD Support Program**

Peer Recovery Success

- Client transitioned from homelessness and chronic substance use into residential care, showing significant progress in recovery.
- Overdose survivor completed treatment, secured stable housing and employment, and became an NA sponsor.
- Client regained visitation rights with children, achieved sobriety, and advanced to a managerial role after overcoming legal and personal challenges.
- Supported a client through relapse to sustained AA participation and ongoing sobriety.
- Guided a hospital referral into treatment, where they now actively inspire and engage peers.
- Coordinated QRT transport from jail to treatment, ensuring immediate access to recovery resources and support for the client.

The Genesee County QRT is dedicated to supporting overdose survivors by connecting them to harm reduction, treatment, and recovery resources. We work to reduce repeat overdoses, promote access to post-overdose care, address social determinants of health, and enhance community efforts to prevent overdose.



Harm Reduction Distribution Outcomes:

Quarter One (Oct-Dec. 2024):

- 7,884 Naloxone kits
- 5,451 Fentanyl Testing Strips

2024 Totals:

- 27,295 Naloxone Kits
- 19,874 Fentanyl Test Strips



R.I.S.E. (Reach, Inspire, Serve, Empower)

- Established in 2021 in partnership with the Genesee County Sheriff's Office and community partners.
- Serves justice-involved individuals during incarceration and reentry.
- Wraparound supports include:
 - Peer recovery & MAT access
 - Mental health & substance use services
 - Parenting/family support
 - Social determinant navigation
- Over 800 individuals served in the past year.

R.I.S.E. QUARTERLY REPORT

The R.I.S.E. initiative works in partnership with the Genesee County Sheriff's Office I.G.N.I.T.E program to provide mental health, substance use, and health-related social needs support during incarceration and reentry. R.I.S.E. aims to reduce recidivism and improve health outcomes for individuals and families impacted by incarceration.



226

referrals to R.I.S.E. from January to March 2025.



MENTAL HEALTH SUPPORT

96 referrals include mental health support services.

PEER RECOVERY COACHING

153 referrals include Peer Recovery Coaching services.



PARENTAL AND DEPENDENT SUPPORT

59 referrals include parental and dependent support.



SOCIAL DETERMINANTS OF HEALTH

170 Referrals include health-related social needs.



SERVICES AVAILABLE TO R.I.S.E. PARTICIPANTS:

In the Genesee County Jail

- Peer Recovery Coaching and connection to Substance Use Disorder treatment
- Behavioral health support services
- Health-related social needs case management for reentering individuals and their dependents
- Parenting and visitation support services

Upon Returning Home

- Peer Recovery Coaching and support for treatment entry
- Behavioral health support
- Health-related social needs case management (navigation support for medical benefits, primary care, employment, basic needs, etc.)
- Parenting and caregiver support services



This project is supported by Michigan's FY 21 Comprehensive Opioid, Stimulant, and Substance Abuse Program # 15PBJA-21-GG-04538-CDAP, awarded by the Bureau of Justice Assistance, Office of Justice Programs, U.S. Department of Justice (DOJ), and administered by the Michigan State Police (MSP). Points of view or opinions contained within this document do not necessarily represent the official position or policies of the U.S. Department of Justice or the MSP.



GREATER FLINT HEALTH COALITION

Proposed Use of Settlement Funds

GFHC, in collaboration with our treatment provider partner, New Paths, Inc. are seeking \$500,000 in ongoing support from Michigan's State Opioid Settlement Funds to sustain and expand hospital-, community-, and jail-based peer recovery coaching services in Genesee County.

<u>Setting</u>	<u>Role of Peer Recovery Coaches</u>
Hospitals (Opioid Overdose Recovery Program)	Engage patients post-overdose in emergency rooms; connect to care
Community (Genesee County Quick Response Team)	Law Enforcement and EMS partnerships; Harm reduction distribution; Community education
County Jail (Reach, Inspire, Serve, Empower, or R.I.S.E.)	Engage pre-release individuals; Increase connection/adherence to jail-based outpatient treatment; ensure care continuity



Why It Matters

- This proposal aligns directly with the **intended use of opioid settlement funds**: building sustainable, community-based recovery infrastructure. The investment will complement existing Medicaid reimbursement and grant efforts, ensuring long-term impact.
- **Peer recovery coaches are proven, cost-effective, and people-centered.** With opioid settlement dollars, we have a timely opportunity to scale what works—and save lives.

Impact:

- **Increased recovery engagement** and reduced relapse rates
- **Lower hospital readmissions** and **ER visits**
- **Reduced recidivism** for those involved in the justice system
- **Cost savings** through early intervention and reduced emergency care usage



Thank you!

Kelly Ainsworth
Senior Program Director
Greater Flint Health Coalition
Email: kainsworth@flint.org



GREATER FLINT
HEALTH COALITION



GREATER FLINT HEALTH COALITION