

Michigan
Department of Corrections

**Key Indicator Trends and
Prison Population Projections**

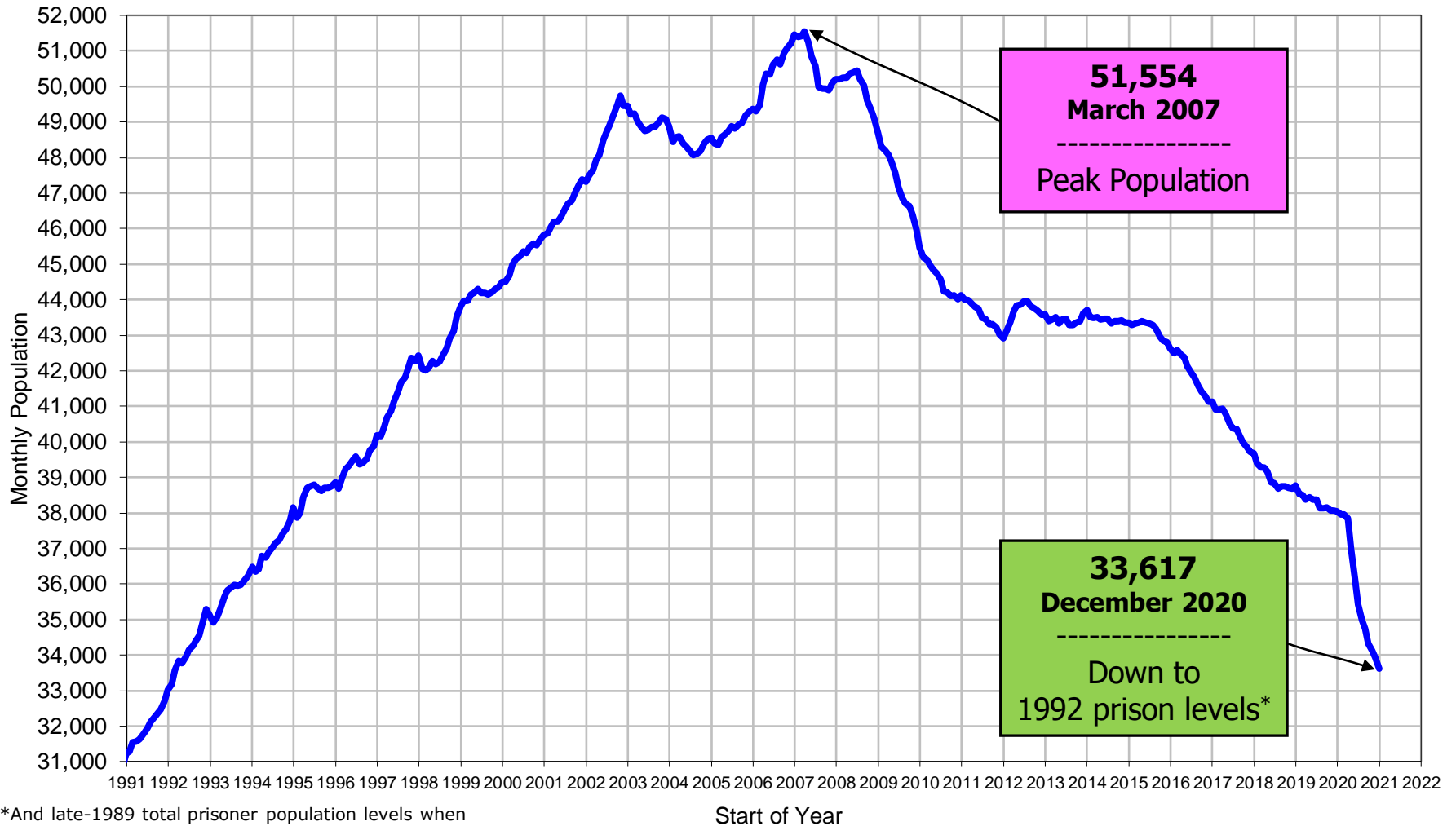
**House Appropriations Subcommittee on
Corrections**

March 3, 2021

(Data as of 2/19/2021)

Historical Perspective: More recently, after growth of 20,000+ inmates in 16 years, the population has declined 17,937 inmates in 14 years.

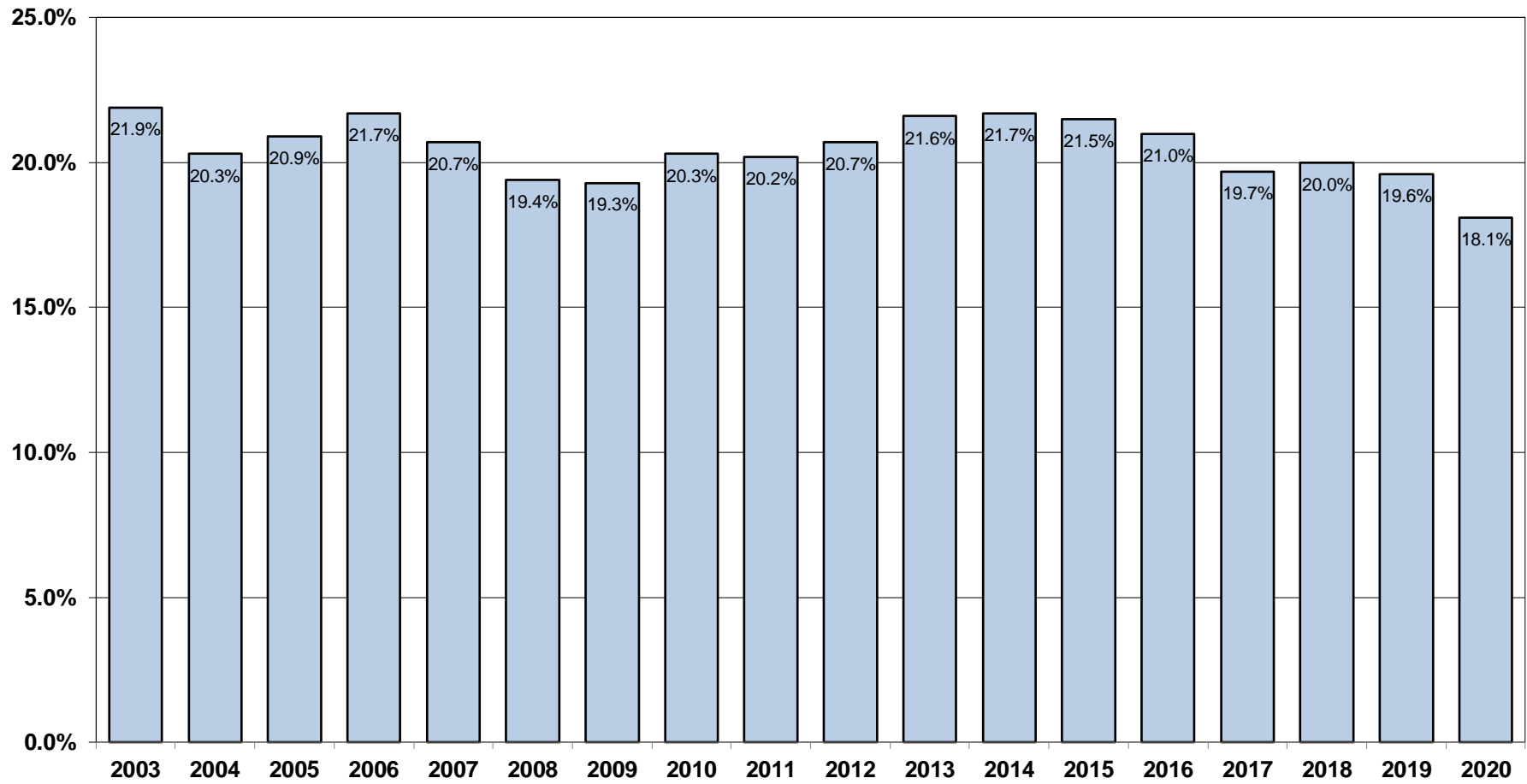
Michigan Department of Corrections **ACTUAL PRISON POPULATION SINCE 1991**



*And late-1989 total prisoner population levels when Michigan had halfway houses (CRP)

Front End Indicators: In 2020, the prison commitment rate decreased by 1.5% from 2019 (slightly below the narrow 19-22% range it had remained in since 2003).

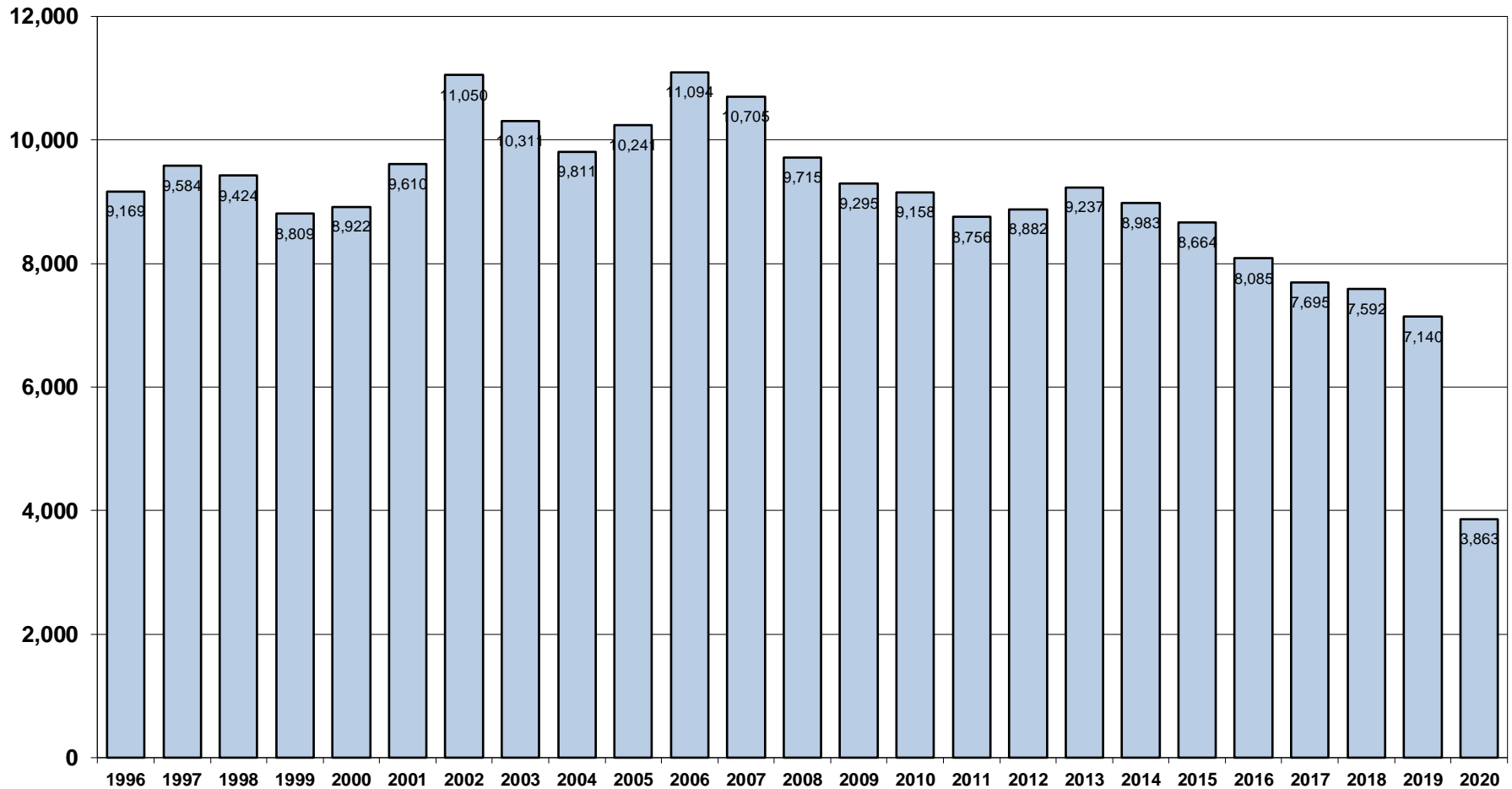
**Michigan Department of Corrections
Prison Commitment Rate***



* The prison commitment rate is the percentage of all felony court dispositions that are sentenced to prison.

Front End Indicators: Since 2006, annual prison intake has decreased 65%. In 2020 it decline 46% from 2019, to a level not seen since before 1981.

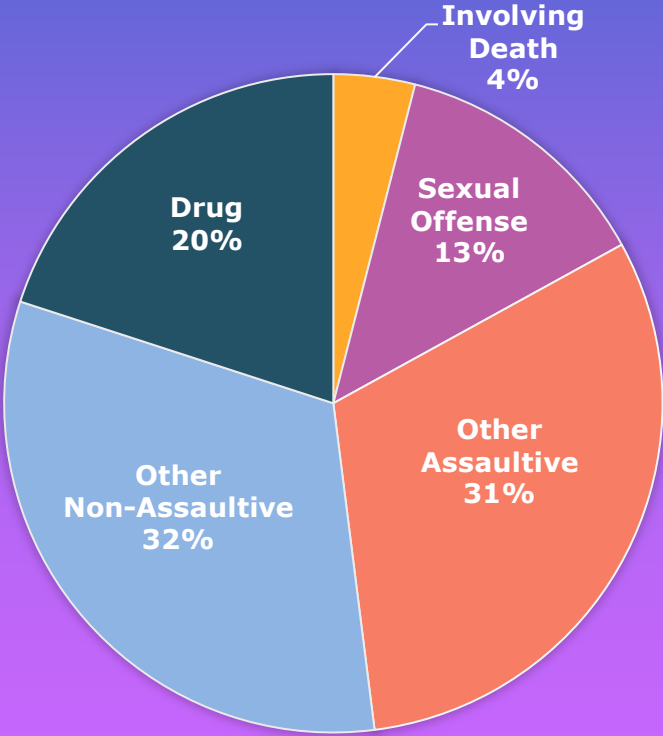
Michigan Department of Corrections Prison Intake*



*Includes new court commitments, probation violators (technical or new sentence), parole violators new sentence, and escapee new sentence.

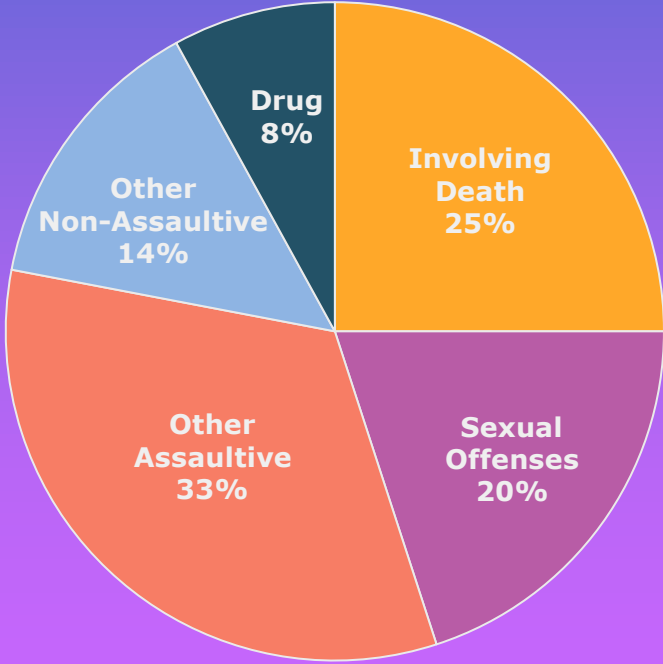
Prison Intake & Population by Crime Groups

Intake
(2020)



Average Cumulative Minimum Term:
4.2 years

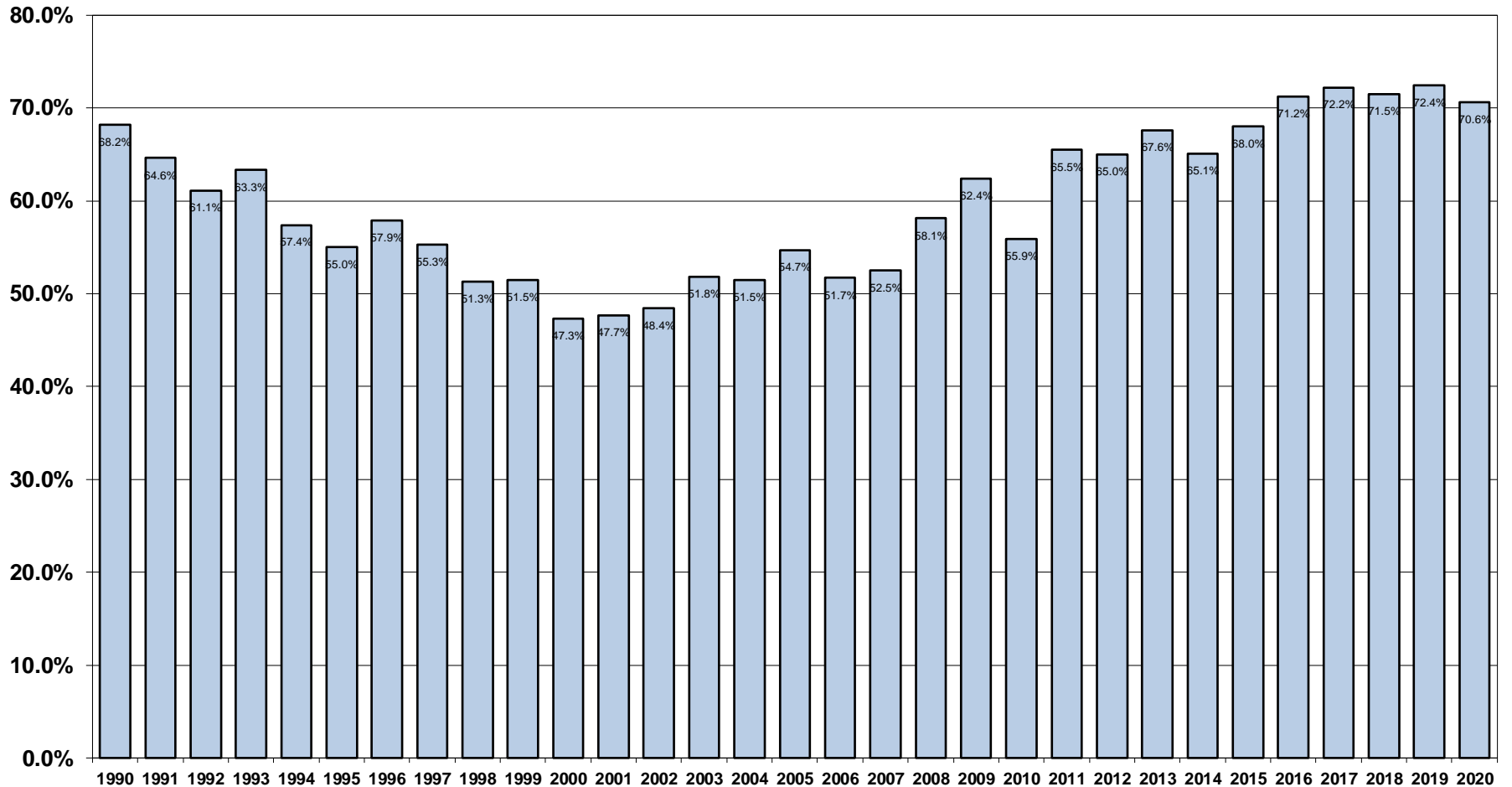
Population
(12/31/2020)



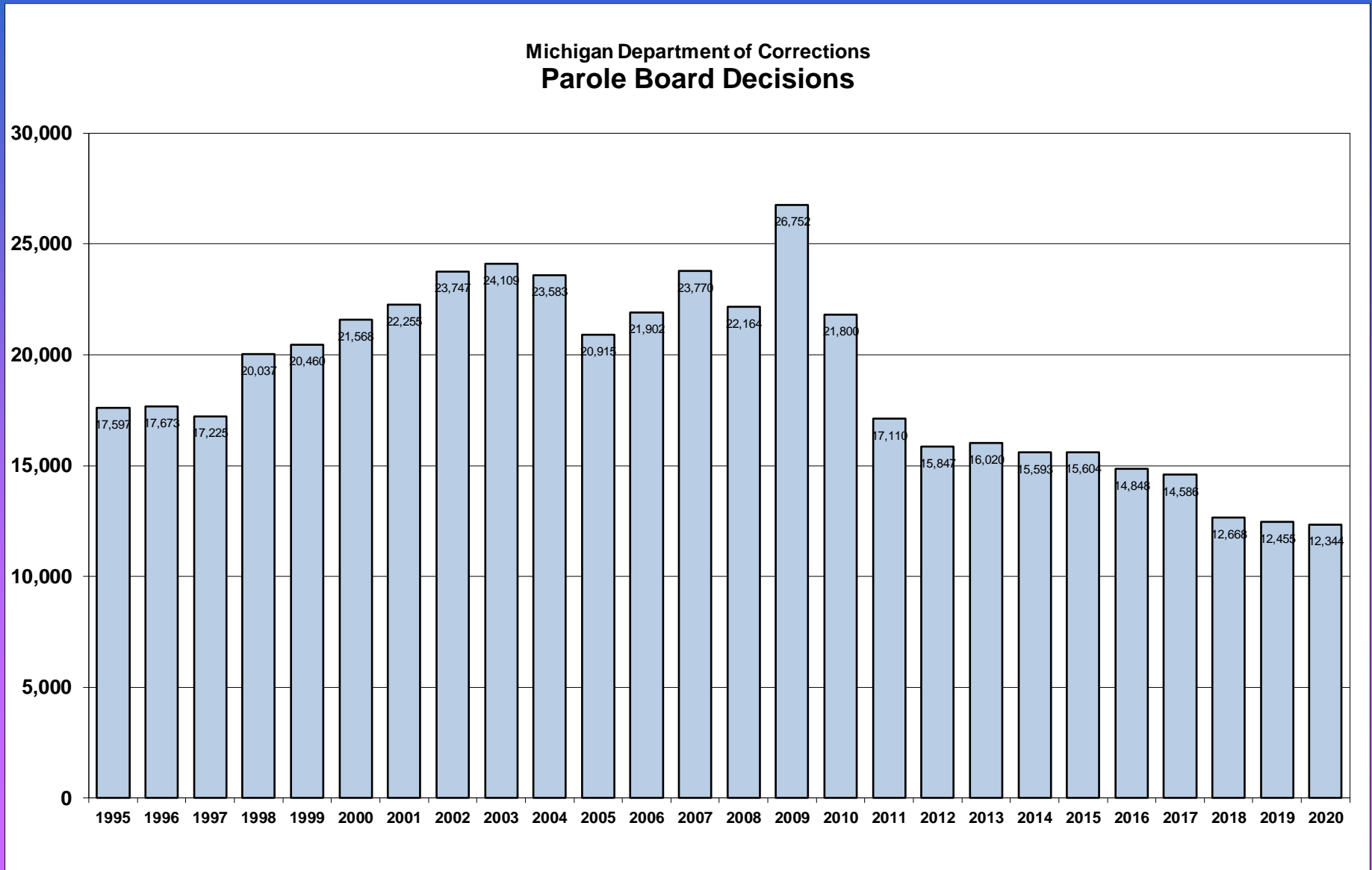
Average Cumulative Minimum Term:
11.7 years

Length of Sentence: The parole rate hovers at record highs, as first hearing prisoners become prepared to successfully reenter society before parole board review.

Michigan Department of Corrections Parole Approval Rate

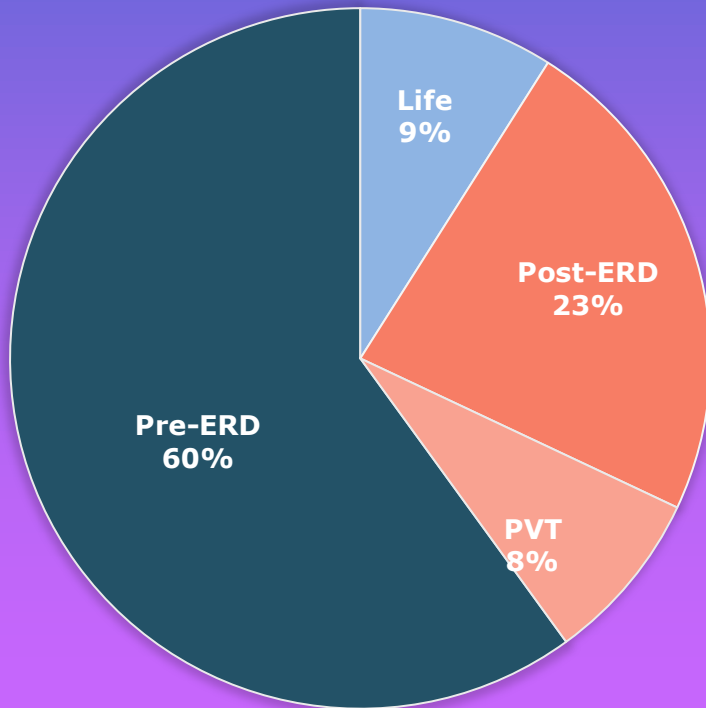


Impact on Releases: As prisoners are better prepared for society and approvals at their first parole hearing increase, the need for subsequent and overall hearings declines.

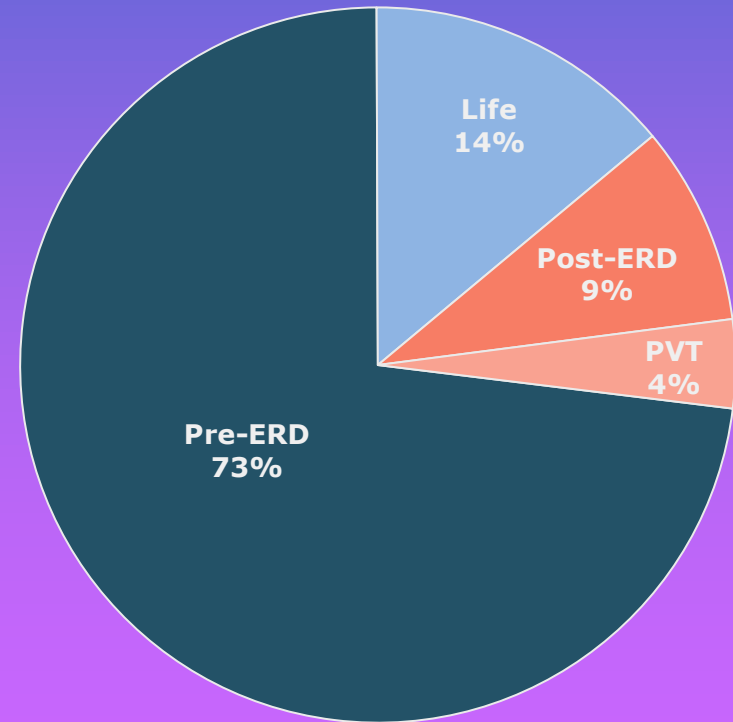


Status of Earliest Release Date (ERD)

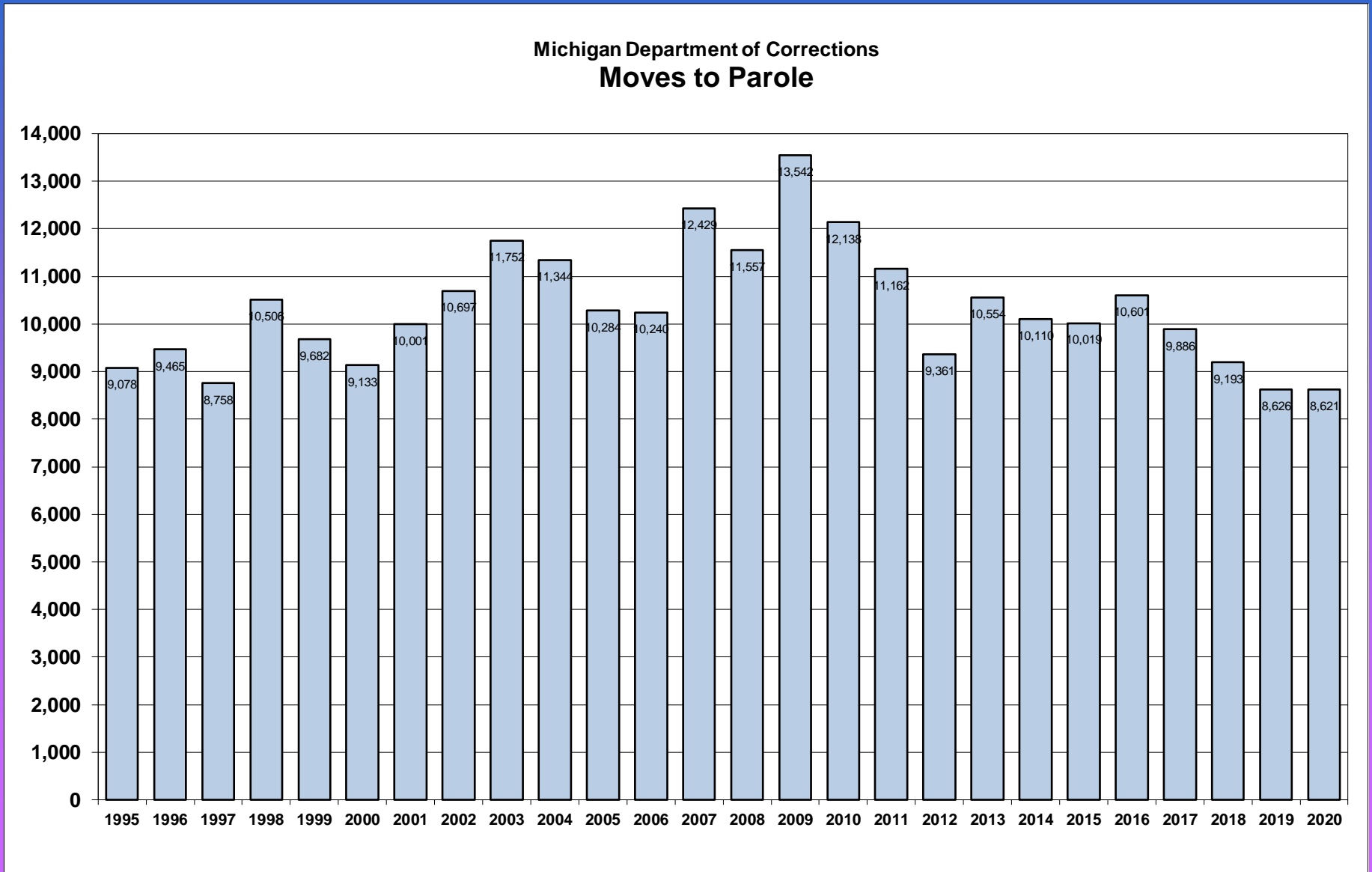
2007 Peak Prison Population



Current Population (12/31/2020)

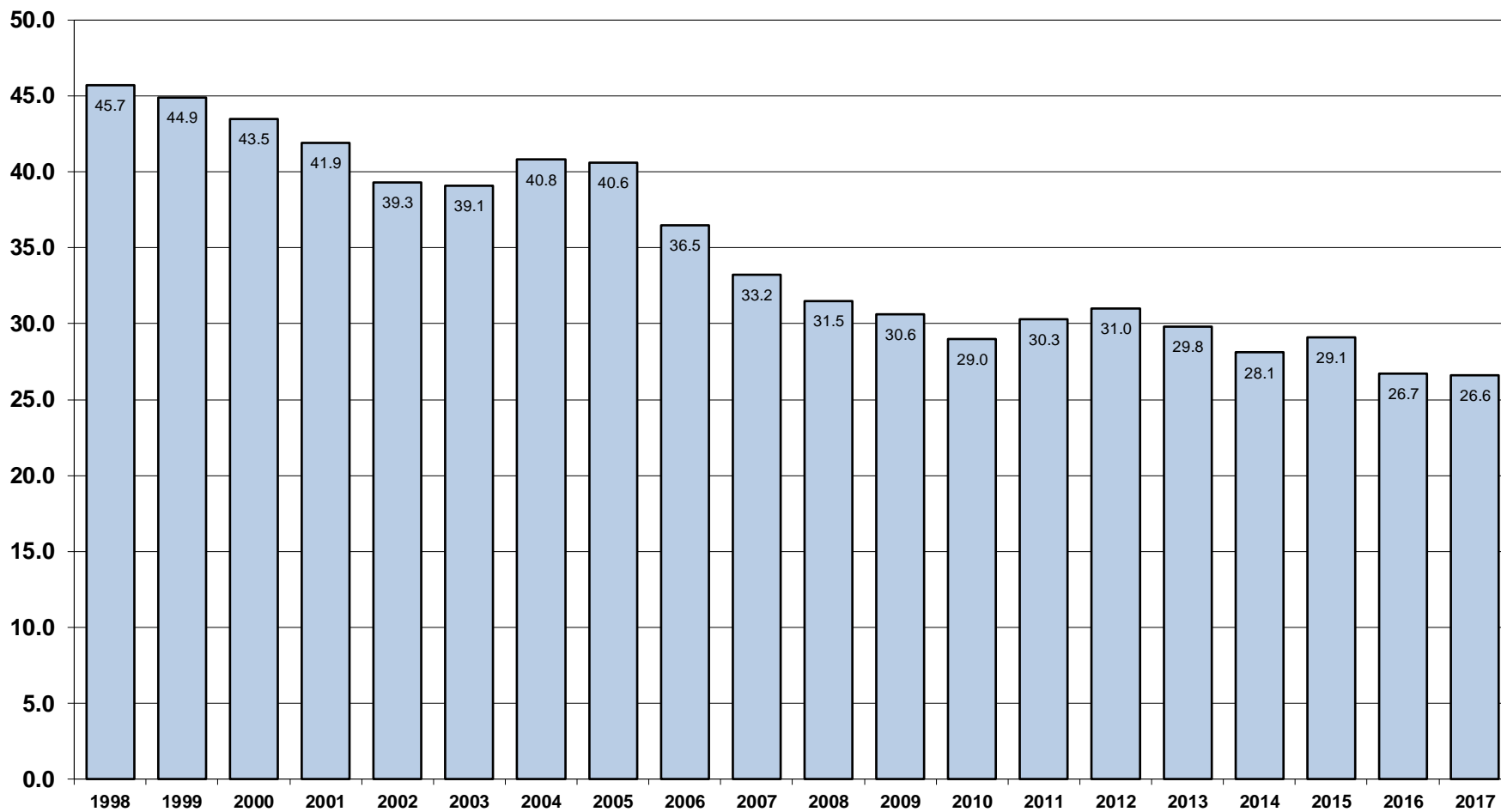


Impact on Releases: After 3 years of decline, paroles stabilized in 2020 at nearly the same level as 2019.



Impact on Returns: Since establishing the baseline for recidivism in 1998, the 3-Year Return to Prison Rate remained in a range of 28-32% for eight years. The 3-Year Return to Prison Rate for 2017 remains at an all-time low, nudging down slightly from 2016 to 26.6%.

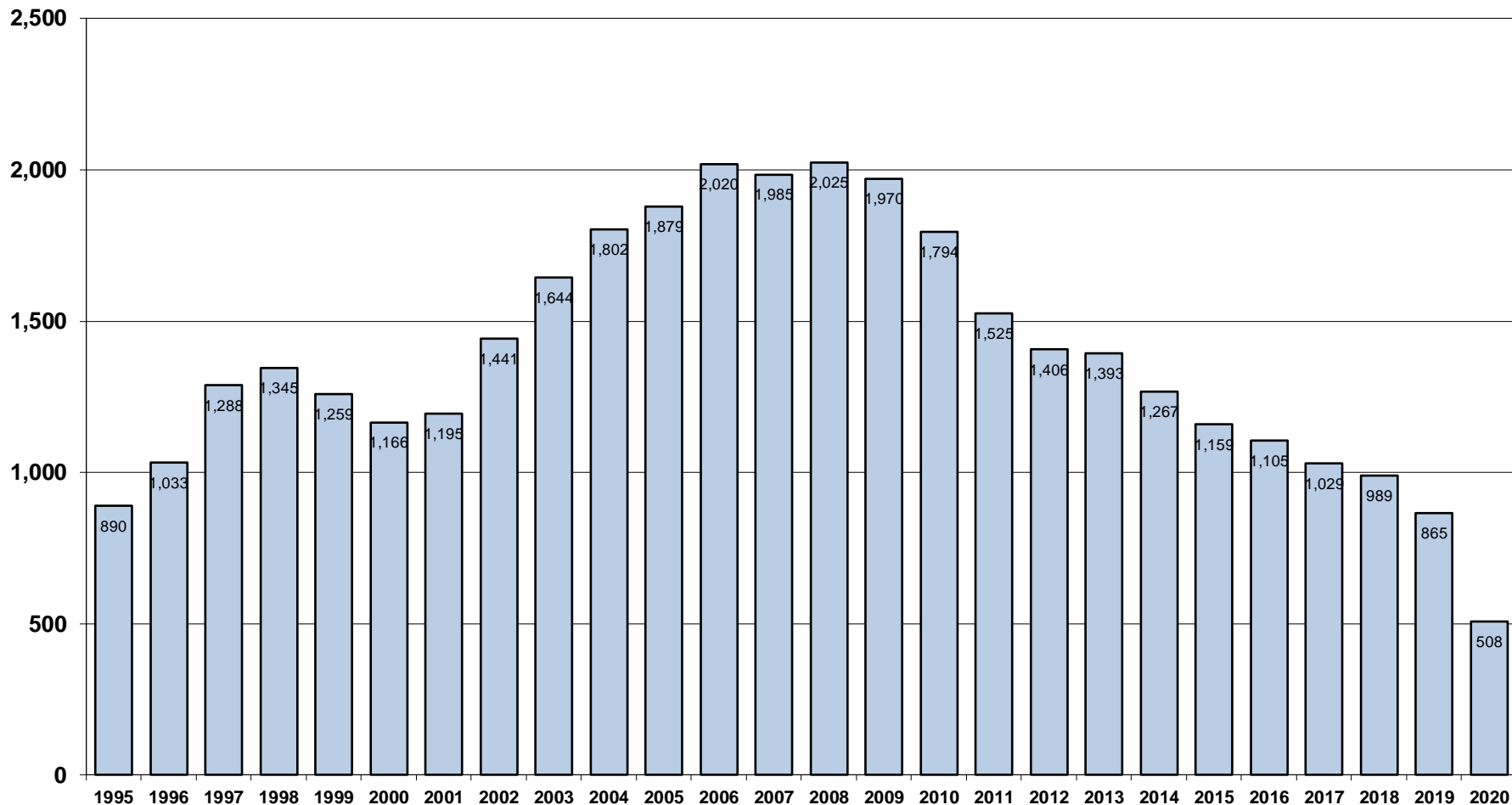
Michigan Department of Corrections
3-Year Return to Prison Rate*



* Includes cases that were returned on Parole Technical Violations or for a New Sentence within three years of release.

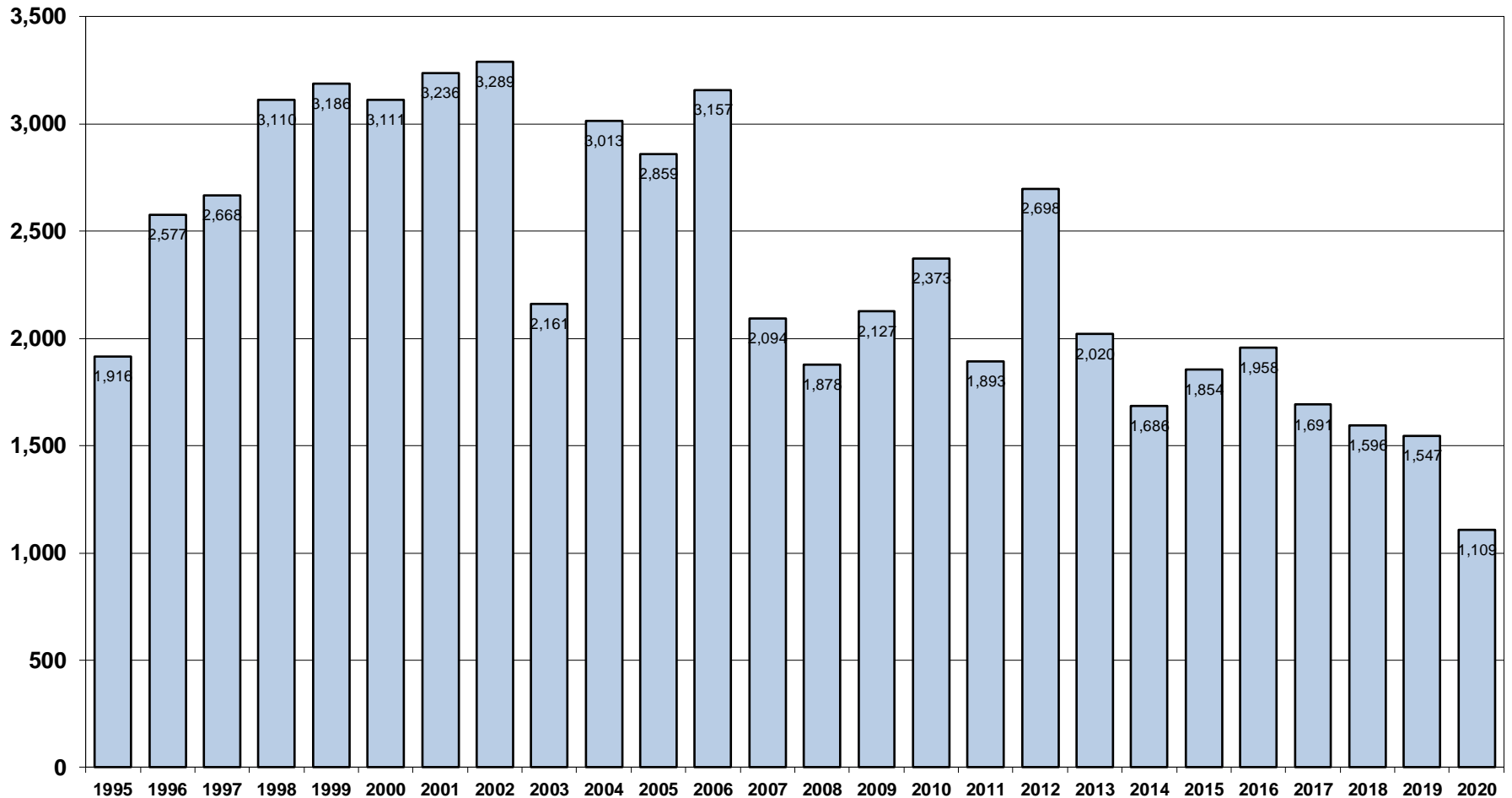
Impact on Returns: The parole violator new sentence (PVNS) intake resulting from new felony prosecutions while on parole continues its decline for the twelfth year.

Michigan Department of Corrections
Parole Violator New Sentence Intake



Impact on Returns: Parole technical violator (PVT) returns to prison have declined to a 32-year low and are down 66% from the 2002 high.

Michigan Department of Corrections
Parole Technical Violator Returns to Prison



Factors Driving the Prison Population

A. Felony Court Dispositions	Down
B. Prison Commitment Rate	Down
C. Probation Population	Down
D. Probation Violators to Prison	Down
E. Prison Intake	Down
F. Intake Average Min Term	Down
G. Parole Approval Rate	Stable
H. Parole Decisions	Down
I. Moves to Parole	Stable
J. Parole Population	Down
K. Max Discharges	Down
L. 3-Year Return to Prison Rate (Recidivism)	Down
M. Parole Violator New Offense Returns (PVNS)	Down
N. Parole Technical Rule Violator Returns (PVT)	Down

Summary

Nearly ALL Favorable

Projection Assumptions

- | | |
|---|-------------|
| A. Model Intake | Up/Stable |
| – 2021 up 54.8%, 2022 up 20.9% (where it reaches 2019 intake level), and then flat at that level. | |
| B. Parole Approval Rate | Stable |
| – Maintains at 2020 level. | |
| C. Parole Decisions | Down/Stable |
| – Down due to 2020 drop in intake, then stable. | |
| D. Moves to Parole | Down/Up |
| – Down further due to drop in intake, then possible increase in 2023 (due to intake recovering to 2019 levels). | |
| E. Parole Violator New Offense Returns (PVNS) | Stable |
| F. Parole Technical Rule Violator Returns (PVT) | Stable |
| – Stable but possible decrease years after intake decrease | |

The new prison population projection anticipates a continued but slowing decline as a baseline forecast absent any new initiatives.

Michigan Department of Corrections ACTUAL AND PROJECTED PRISON POPULATION

