



wellspringlutheran.com

4100 Pier North Blvd.  
Suite A  
Flint, MI 48504

TESTIMONY TO

## **The Michigan House of Representatives**

### **Health and Human Services Appropriations Subcommittee**

*Chairperson: Rep. Mary Whiteford*

PRESENTED BY

**Sean de Four, Senior Vice President and Chief Operating Officer  
Wellspring Lutheran Services**

**Wednesday, February 20, 2019**

#### **Introduction**

Good morning Chairwoman Whiteford and members of the Health and Human Services Appropriations Subcommittee. I am Sean de Four, Senior Vice President and Chief Operating Officer of Wellspring Lutheran Services. I am here today testifying as a member agency of the Michigan Federation for Children and Families, and as the co-chair of Michigan's Child Welfare Partnership Council.

I would like to give the committee an overview of Wellspring, including the breadth of services we provide. I would also like to share our perspective as a private agency in the child and family services system in Michigan, and, I would like to highlight what we believe are the priority opportunities for this body to consider in order to strengthen the continuum of services for Michigan's most vulnerable citizens.

#### **Wellspring**

In case you are not already familiar with us, Wellspring Lutheran Services is one of Michigan's largest and most historic human service organizations. Wellspring came into being through the merger of two agencies — Lutheran Child and Family Service of Michigan, a child and family services organization, and Lutheran Homes of Michigan, a senior services organization, both of which were formed by the Lutheran Church over 125 years ago. Today, Wellspring employs approximately 1,100 staff carrying

out our work in more than 50 of Michigan's 83 counties (including the Upper Peninsula). One of the things that makes us unique is the diverse set of services we provide, which encompass the full lifespan, from children to families to seniors.

In the area of child welfare, Wellspring is proud to be the largest provider of family preservation services in Michigan, serving over 2,000 families each year. Using a mix of program models, Wellspring staff provide intensive in-home services to prevent families from having their children placed into foster care. Some of these models, like *Families First*, work intensively with families in the short-term to get them through a period of crisis that put them at risk of having their children removed. Other programs, like the *Family Reunification Program*, work with families after their children are returned to them following a stay in foster care, to make sure they are stable and not at risk of having their children returned to out-of-home care. Other programs, like *Families Together Building Solutions*, *Family Assistance* or *Advanced Impact*, work with moderate risk families after an investigation by Child Protective Services, to eliminate any issues that put their children at risk of further abuse or neglect.

This past year, through a contract with MDHHS, Wellspring launched the first intensive home-based intervention for families who are struggling with addiction — and consequently, put their children at risk of abuse and neglect. The program, known as the *Substance Use Disorder Family Support Program*, is the first of its kind and represents a significant step toward combatting the increase in the number of kids coming into foster care due to the opioid crisis currently affecting our state and our nation.

Family preservation programs represent perhaps one of the greatest returns on investment the state has in the child welfare arena. We liken the investment in Family Preservation to investing in wellness and prevention in the health care world to reduce the need for more expensive treatment and debilitating chronic disease later on. In a FY2017 Family Preservation Programs report provided by MDHHS to the Michigan Legislature, MDHHS indicated that Family Preservation Programs produced roughly \$285 million in cost savings by avoiding additional foster care placements — and that is an annual figure! In each of the programs I highlighted earlier, somewhere between 80-95% of families avert having their children placed in foster care and have no further contact with CPS.

Unfortunately, the department has significantly underfunded these contracts over the past 10 years. Very limited or no funding increases have been provided for most family preservation contracts since 2009 — while Michigan spends 10X more on foster care and other out-of-home care services than it spends on prevention and preservation services. **We invite the committee to take advantage of the opportunity to generate further savings and divert even more families from the foster care system, by investing now to sustain and expand these service offerings**



[wellspringlutheran.com](http://wellspringlutheran.com)

4100 Pier North Blvd.  
Suite A  
Flint, MI 48504

Wellspring is also one of Michigan's largest private foster care agencies with approximately 350 children in our foster care program on any given day. We also provide adoption services through Lutheran Adoption Services, an entity jointly owned by Wellspring and another Lutheran agency, Samaritas. Lutheran Adoption Services finalizes adoptions for approximately 450 children each year, representing almost 20% of all of the adoptions processed in the state annually.

Michigan as a state is unique, in that both private agencies and MDHHS provide direct foster care services, with private agencies managing roughly 45% of all foster care cases and 100% of adoption cases. Because of this unique split, the state's success in child welfare rests equally on the shoulders of the private and public sector. **As such, we invite the committee to take advantage of opportunities that come before this body, to ensure equitable and appropriate funding for private agencies at parity with the department.**

Wellspring is also privileged to be one of the five agencies that came together to form the West Michigan Partnership for Children, the entity leading Michigan's performance-based funding pilot in Kent County. The pilot was developed through the work of the Child Welfare Partnership Council, which I have had the privilege of co-chairing with the Children's Services Administration Director since 2017. The partnership council was established in response to a 2014 report, created at the request of the legislature, to explore the feasibility of implementing a performance-based child welfare system in Michigan. The Council's purpose is to support the development and implementation of such a system, which we believe will enhance the quality of services provided by both private and public sector organizations to families in the state.

The performance-based pilot in Kent County represents a special opportunity for the state to test a funding system that pays for value, rather than services, and incentivizes providers for producing the right outcomes for kids and families, rather than the wrong ones. Because of the flexibility afforded by the pilot, those agencies involved are accelerating the use of data for decision-making at the case level and increasing provider performance through greater transparency and accountability. This is an area in which the state continues to struggle, as the database system used for foster care services, MISACWIS, cannot produce the management reports or accuracy the state needs. **We invite the committee to capitalize on the opportunities presented by the pilot, by ensuring it is adequately funded, supported and sustained, over the 5-year testing period. We also invite the committee to support any additional projects brought forward by the Child Welfare Partnership Council, to test other performance-based approaches in our child welfare systems.**

Wellspring also provides residential services for youth in the child welfare system who are cognitively impaired or developmentally disabled, and



[wellspringlutheran.com](http://wellspringlutheran.com)

4100 Pier North Blvd.  
Suite A  
Flint, MI 48504

who have a co-occurring mental health issue that prevents them from being safely maintained in the community. Our program, *New Directions*, is housed on our 80-acre campus in Farmington Hills and serves approximately 25-30 youth daily.

The Families First Prevention Services Act that Janet mentioned in her remarks adds new requirements to residential providers that are not supported by our current rates. These new requirements will not only improve the care that residential youth receive, but also it will likely shorten the length of stay for children in what is one of the most expensive levels of care. Most importantly, states cannot take advantage of the new prevention funding the Families First Act offers, until residential providers are able to comply with the act's new requirements. **We invite the committee to take advantage of opportunities afforded to children and families through the Families First Prevention Services Act by supporting the funding necessary for residential providers to meet the new requirements.**

Finally, in the senior services world, Wellspring offers a continuum of residential services to help seniors remain as independent, safe and healthy as possible. Our offerings include approximately 600 housing units, 400 of which are designated as "affordable housing" in several cities throughout Michigan; independent and assisted living; memory and dementia care; long-term skilled nursing and short-term rehabilitation; and a range of in-home services to support seniors' ability to remaining safely in their homes, including home health, in-home care and hospice care.

We at Wellspring are finding areas where we can leverage the respective strengths of our senior services, and child and family services divisions to increase our impact to both. **We invite the committee to join us in this effort by supporting opportunities that come before you, to address major gaps in our state's continuum of care, including:**

- **Meeting the demand for affordable housing that increasingly exceeds the supply, for both seniors and families.**
- **Addressing the growing substance abuse and addiction problems that are affecting our teens, families and seniors, in virtually every area of service.**
- **Meeting the growing need for integrated behavioral health services for children, families and seniors, so people get the services they need no matter which provider's door they walk through.**
- **Improving the use of data to drive decision-making at the service and system level, which has been proven to produce better decision-making and improved outcomes.**



[wellspringlutheran.com](http://wellspringlutheran.com)

4100 Pier North Blvd.  
Suite A  
Flint, MI 48504

Now, more than ever, we need the attention and commitment of our state representatives to these important issues. Our families are depending on us.

Thank you, madam chair and committee members, for the opportunity to testify before you today. I would be happy to answer questions and provide any additional information.

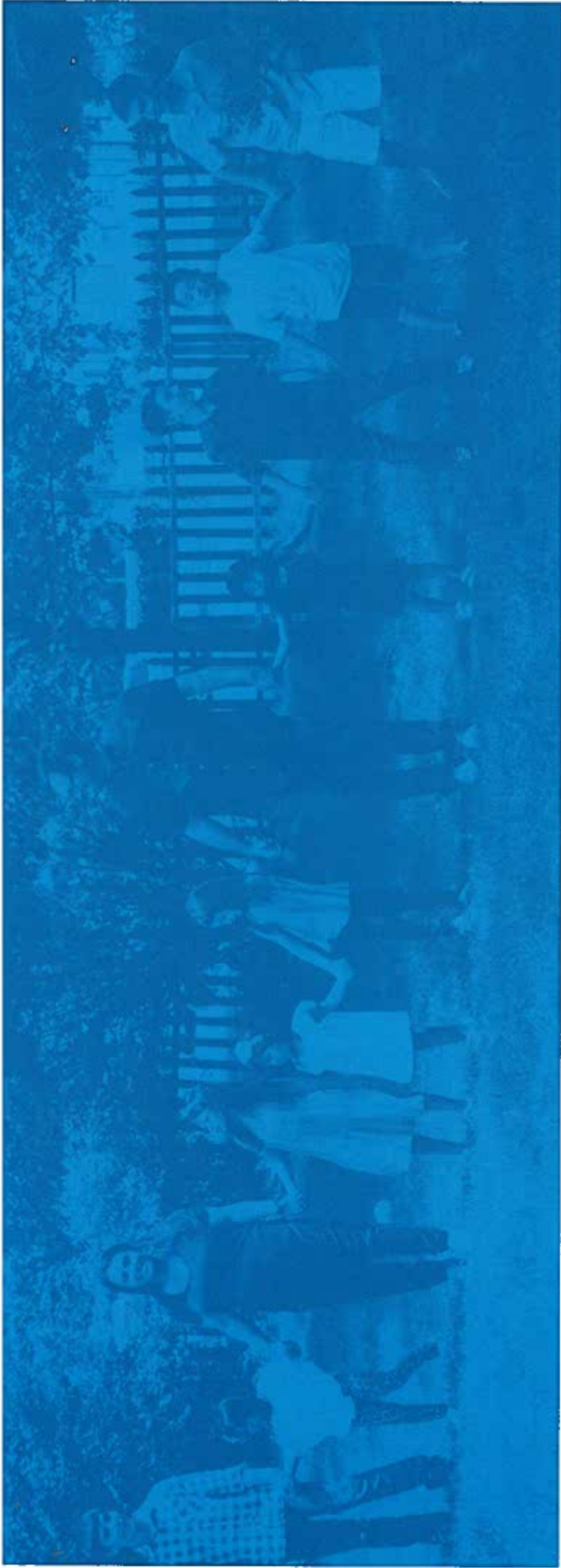
---

Sean de Four  
Senior Vice President & Chief Operating Officer  
Wellspring Lutheran Services  
sdefour@wellspringlutheran.com  
989.262.7483



wellspringlutheran.com

4100 Pier North Blvd.  
Suite A  
Flint, MI 48504



Celebrating  
**125**  
YEARS

Timely purpose.  
**Timeless mission.**

**Ywellspring**  
LUTHERAN SERVICES

# Wellspring & You

A GUIDE TO CELEBRATING 125 YEARS OF SERVICE TO PEOPLE IN NEED





**For more than 125 years, hope has flowed from a proven, Christ-centered source to bring life-giving solutions to those who thirst for hope.**

*Hope flows through us.*

Just as a wellspring bubbles up from deep within the earth to bring life-giving water, Wellspring Lutheran Services brings life-giving support.

We are Wellspring Lutheran Services and we engage people with compassionate, human care services. As a statewide nonprofit organization, we offer services from family preservation and foster care to a complete line of senior services to help renew and sustain individuals, families and communities across Michigan.

## Our Services

Wellspring Lutheran Services engages people at every stage of life to help them discover and embrace their God-given potential.

Through these services, we will help change lives, build strong families and transform communities:

- Adoption Resources
- Affordable Housing
- Assisted Living
- Family Preservation
- Foster Care
- Home Care
- Hospice & Grief Support
- Independent Living
- Memory Care
- Parenting Support
- Short-term Rehabilitation
- Skilled Nursing Care
- Supportive Housing



# Senior Services

**Assisted Living.** Meets the day-to-day needs of residents in a comfortable, home-like setting. Residents enjoy all the benefits of an independent lifestyle, and have access to in-house services, as needed.

Saginaw

**Grief Support.** We offer grief support groups for adults, a free bereavement camp to help kids deal with the loss of a loved one, and chaplains.

Frankenmuth

**In-Home Care.** Home-based care includes:

**Home Health.** With a physician's order for home-based health care, patients benefit from clinically sound, individualized care provided by our licensed medical professionals.

**Hospice.** Compassionate end-of-life care helps patients and their families learn to focus on comfort and quality of life, rather than cure.

**Personal Assistance.** Focused on personal care, wellness and companionship, housekeeping and homemaking, our in-home services are performed by highly trained and compassionate caregivers.

Frankenmuth • Saginaw • Alpena (Personal Assistance only)



**Long-Term Care.** Our skilled nursing care facilities provide round-the-clock care for loved ones who require more extensive care.

Fairview • Frankenmuth • Livonia • Marquette

**Memory Support.** We help families care for those facing early stage and advanced dementia, Alzheimer's and similar conditions.

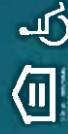
Fairview • Frankenmuth • Livonia • Marquette • Saginaw

**Respite Care.** Give yourself and your loved ones the time you need to recharge your batteries for a day, week or longer with our respite care program. It will allow you some time as you take on the next step in caring for your loved one.

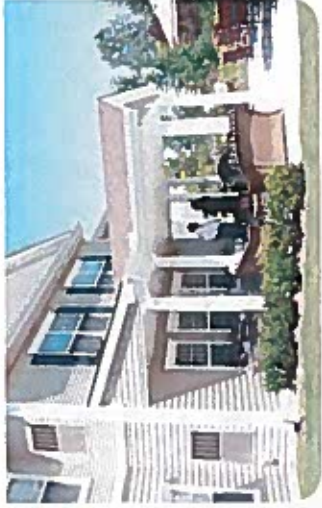
Alpena • Fairview • Frankenmuth • Livonia • Marquette • Saginaw

**Short-Term Rehabilitation.** Rehabilitation services after an illness or surgery help you or your loved one focus on healing and recovery — and getting you back to your regular routine quickly.

Frankenmuth • Livonia • Marquette





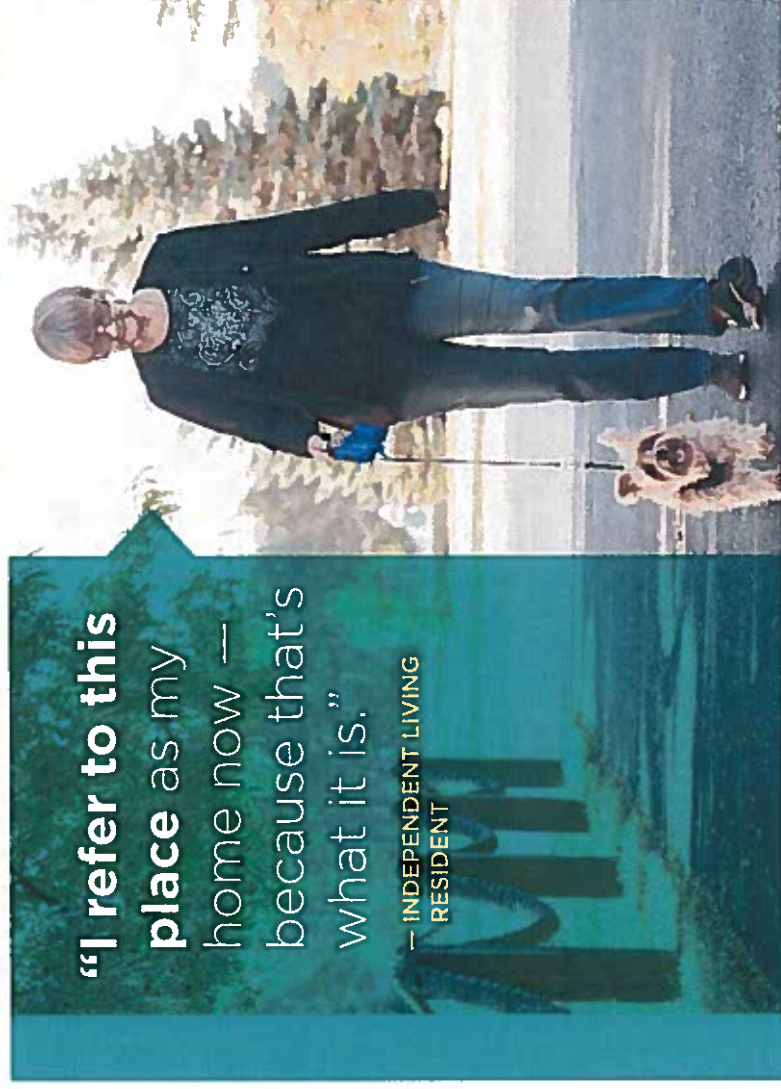


## WELLSPRING LUTHERAN SERVICES

### Independent Living

For active seniors who require little or no outside assistance, we offer condominiums, apartments and townhomes, all designed to promote an active lifestyle.

- The Pines Apartments, ALPENA 989.356.3396
- Hampton Meadows Apartments, BAY CITY 989.892.1912
- Oakman Place Apartments, DETROIT 313.868.1318
- AuSable Valley Apartments, FAIRVIEW 989.848.2104
- Gibraltar Manor Apartments, GIBRALTAR 734.676.4802
- Creekside Village, MONROE 734.241.3906
- Senior Living Campus, SAGINAW 989.791.1831
- Our Saviour's Manor Apartments, WESTLAND 734.595.4663



**"I refer to this place as my home now — because that's what it is."**

— INDEPENDENT LIVING RESIDENT



SENIOR LIVING CAMPUS

WELLSPRING LUTHERAN SERVICES  
SENIOR LIVING CAMPUS

5935 Shattuck Road, Saginaw, MI 48603 | 989.791.1831

Visit our website!  
saginawseniorliving.com

INDEPENDENT LIVING

ASSISTED LIVING

MEMORY SUPPORT

## Independent Living

Living independently is something we all want. Yet, living in community is something we need. Community helps us stay connected to family and friends.

Come to a place where you can flourish, connect with loved ones and build new friendships — a place where you can stay active, healthy and engaged, free from the commitments of caring for home maintenance and repairs.



## Assisted Living

We all need a hand sometimes. And that's OK. It's that supportive hand with the little things that helps you remain as active and connected as possible. When you choose Wellspring for assisted living, you can focus on the important aspects of life — things like growing friendships, filling your social calendar, keeping active and continuing to nurture family bonds.

## Memory Support

A best friend is one who can complete your sentences or communicate without ever saying a word. Nobody knows you like a best friend. Our memory support community has been designed for residents who live with memory-related illness. And our staff is specifically trained in the Best Friends™ approach to care for your loved one.

## Our Promise

Imagine a place so inviting, it becomes your home. Our Saginaw campus is designed for you to live life to the fullest. The Wellspring family is by your side, encouraging you and your family every step of the way. And our tailored approach fits your lifestyle and preferences.

Schedule a tour TODAY!

# Child & Family Services

**“All that we’ve been praying and hoping for has converged with a precious child of God joining our family.”**

LCMS PASTOR STAHL & FAMILY



[wellspringfostercare.com](http://wellspringfostercare.com)

**Foster Care.** Offers children a temporary home with a foster family or relative until they can be reunited with their biological parents.

Bay City • East Lansing • Gaylord • Kentwood • Oak Park

**Residential Care.** Treatment programs provide support and transitional care to youth, ages 12 to 18, who struggle in adapting to foster care because of emotional, behavioral or physical needs.

New Directions, Farmington Hills

**Supportive Housing.** For homeless youth and families, our supportive housing provides a place to live and an opportunity to learn valuable life skills.

Detroit

**KIDS NEED SOMEONE THEY CAN DEPEND ON.**



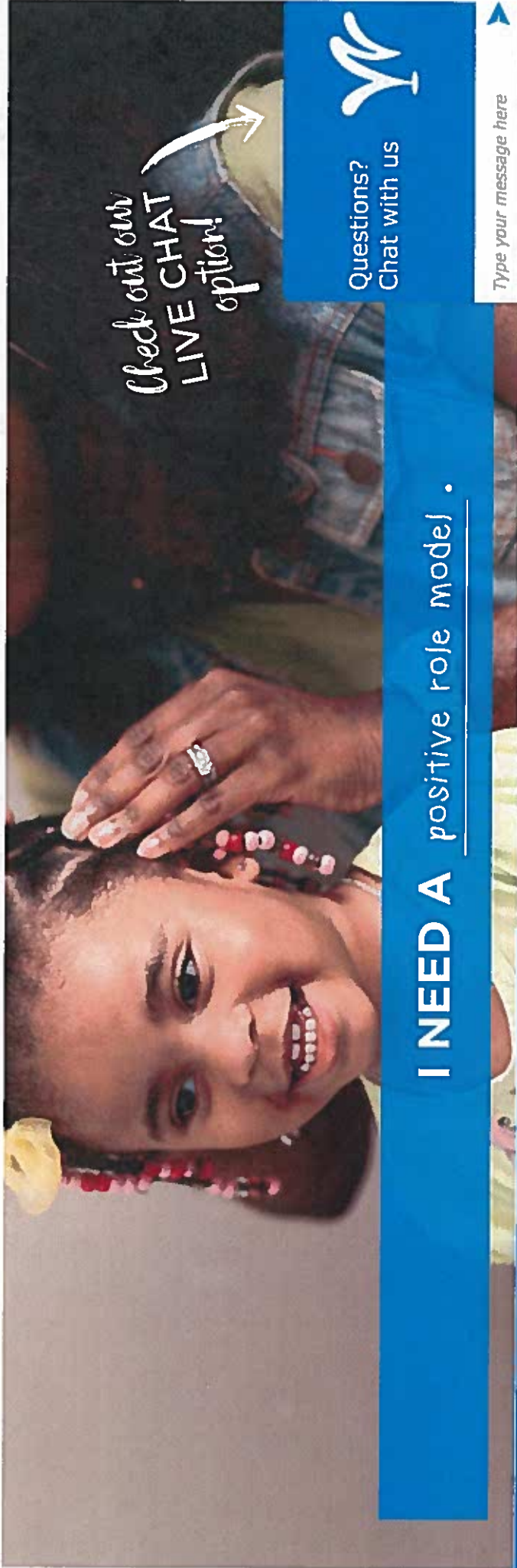
Each year approximately 7,400 children enter foster care for the first time in Michigan. And on any given day there are approximately 13,000 children in foster care or a residential placement due to abuse or neglect.



FOSTER CARE

**WE NEED FOSTER PARENTS.**

Visit our **NEW** website!  
wellspringfostercare.com



Check out our  
**LIVE CHAT**  
option!



Questions?  
Chat with us

**I NEED A positive role model.**

Type your message here



CENTRAL REGION

517-451-4015

GREAT LAKES BAY REGION

989-252-7533

NORTH REGION

989-252-7533

SOUTHEAST REGION

313-244-0904

WEST REGION

616-723-8664

**CHILDREN IN OUT-OF-HOME CARE IN 2016**

counties with LOWEST RATE	rate	counties with HIGHEST RATE	rate
1. Charlevoix	1.5	1. Luce	21.3
2. Houghton	1.5	2. Gogebic	19.9
3. Gratiot	1.8	3. Crawford	14.7
4. Washtenaw	1.8	4. Cass	14.2
5. Ottawa	1.9	5. Arenac	13.3

State of Michigan Total 4.8 per 1,000

-Michigan League for Public Policy mlpp.org



**WOULD YOUR CONGREGATION LIKE TO HOST A FOSTER CARE EDUCATION EVENT?**  
Email [foundation@wellspringlutheran.com](mailto:foundation@wellspringlutheran.com) for more information or to arrange an opportunity.

## WELLSPRING LUTHERAN SERVICES

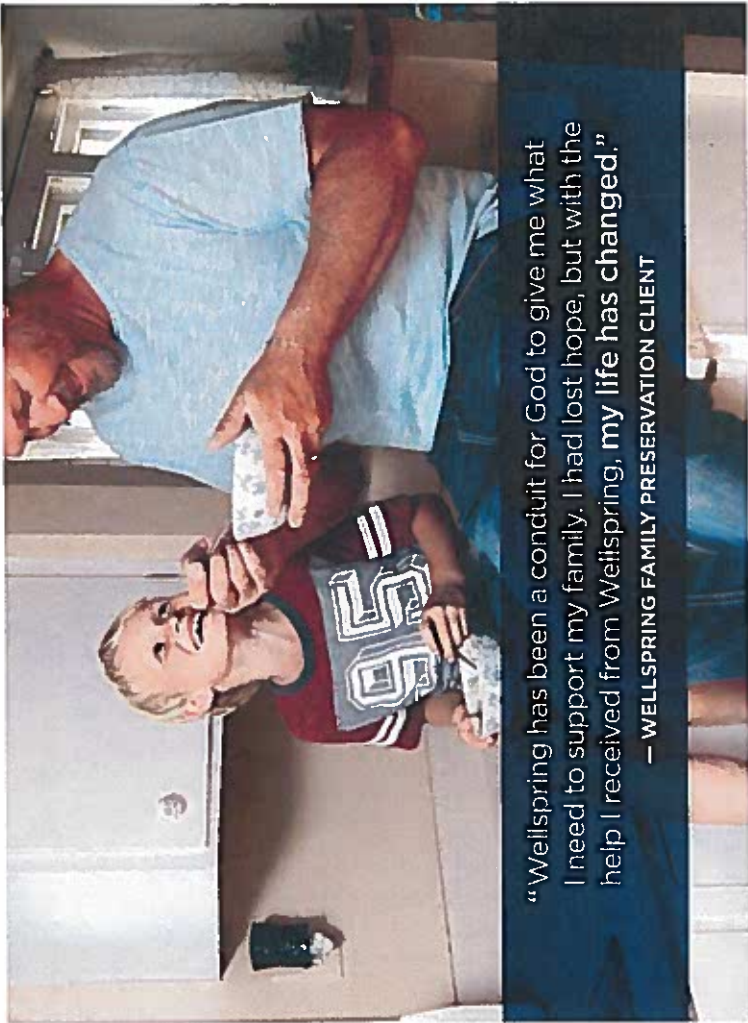
### Child & Family

**Adoption.** Assistance is available through Lutheran Adoption Service Inc., which is Michigan's largest private adoption agency, and is a partnership of Wellspring Lutheran Services and Samaritas.

Statewide

**Parenting Support.** Our multicultural curriculum, Pailalen, is a 9-week violence prevention program designed to provide skills to parents that bring peace into their lives and families, which brings peace to their communities.

Kentwood



“Wellspring has been a conduit for God to give me what I need to support my family. I had lost hope, but with the help I received from Wellspring, my life has changed.”

— WELLSPRING FAMILY PRESERVATION CLIENT

**Family Preservation.** These State of Michigan programs are offered through Wellspring Lutheran Services. Each program is designed to meet the unique needs of each family, giving families access to services that will help keep families together. Programs include:

- Advanced Impact
- Families First
- Families Together Building Solutions
- Family Reunification
- Family Support
- Supportive Intervention

Bay City • Clare • Flint • Gaylord • Kentwood • Mio • Oak Park • Okemos • Sault Ste. Marie • Traverse City

## Urban Ministry Partnerships

**Strong Families.** We believe in a concept of community, where resources are available to people at any stage of life. We want to be a wellspring, a source of **hope and refreshment**, where **young and old** live naturally together, strengthening one another and receiving the security, services and renewal they need to live out their full potential.

Detroit

**Project Compassion.** Project Compassion Ministries (PCM) provides chaplaincy, transportation and special event services to seniors and persons with disabilities who are confined to nursing homes. PCM creates opportunities for **spiritual enrichment** and socialization for our aging and disabled population, adding to their quality of life. PCM's primary service is **God's Love Bus**, which provides safe and reliable wheelchair accessible transportation to churches, museums, parks, theaters, sporting events and other recreational activities for nursing home residents in southeast Michigan.

Detroit

**Luke 5:2.** The Luke Project 52 mobile Clinic, brings prenatal care into Southeast Michigan's the poorest neighborhoods. By setting up rooms for prenatal visits at local church facilities, community centers and through the program's customized bus (clinic on wheels), the clinic ensures new mothers and their unborn children have access to proper prenatal care. The clinic also connects new mothers with churches and local ministries that can provide long term counseling and **support for young mothers** in difficult circumstances.

Detroit

**Mercy House.** In a Partnership with the Franklin Avenue Mission in Flint, Wellspring is providing support for the Mercy House for Women and Children. The Mission was founded in 2014 when they took over a shuttered Lutheran church in one of Flint's most impoverished and crime-ridden neighborhoods. They turned it into a mission field, providing food, clothing and **the love of Christ** — all supported by more than 20 LCMS Michigan District congregations. They saw promise in an abandoned house adjacent to the mission and turned it into a shelter for homeless women with children. Mercy House will open as an emergency/transitional housing program in Flint. With the capacity to serve up to 5 families at-a-time, families will stay for 6-12 months while they secure long-term stable housing and exit the cycle of homelessness.

Flint



“Seek the welfare of the city...”

— JEREMIAH 29:7



FRANKLIN AVENUE  
**MISSION**  
GOOD NEWS FOR THE NEIGHBORHOOD



# WHO WE ARE

Celebrating  
**125**  
 YEARS  
 Timely purpose.  
 Timeless mission.




dgehm@wellspringlutheran.com

**DAVE GEHM**  
 President & CEO

"Serving at Wellspring allows me to use my passion for God's people with my desire to serve. Every day at Wellspring I see evidence of people's lives being changed, and hope growing in them, because of our work. I feel privileged to be a part of that mission. Wellspring is a unique ministry that seeks to impact individuals, families and whole communities, which makes this mission as difficult as it is inspiring. Having been at Wellspring for over 27 years, I have witnessed the services and programs of Wellspring grow, develop and change based on the changing needs of God's people, and I know that will continue as we seek to serve our communities."



mkern@wellspringlutheran.com

**MARIA KERN**  
 Executive Assistant

"I believe in Wellspring's mission, vision and values. It's all about helping people and having their best interests in mind. Seeing the impact this organization has on the people we serve is so rewarding. I'm proud to be a small part of such a large mission."



astorms@wellspringlutheran.com

**AMY STORMS, CPA, CGMA**  
 Senior Vice President & Chief Financial Officer

"It's an honor to lead our organization in our financial goals and processes, and to have input into providing the highest level of integrity in doing so. Providing services and support to the vulnerable of our society by working at Wellspring, especially as a financial professional, is an awesome way for me to serve and live out my passion of sanctity of life."

Celebrating  
**125**  
YEARS

Timely purpose.  
**Timeless mission.**



sdefour@wellspringlutheran.com

## **SEAN DE FOUR**

**Senior Vice President & Chief Operating Officer**

"I feel incredibly fortunate to work for an organization where I can live out my personal mission through my daily work. Coming alongside people when times are hard and helping every person realize their God-given potential is what Wellspring's work is all about. I'm proud to be part of a team that shares this as its purpose, and where leaders challenge each other every day to make sure these values guide our every decision."

## **ALBERT D. KAUL**

**Vice President, Human Resources & Chief People Officer**

"Wellspring encourages my Christian faith in my work with people. During my tenure with the organization, I have served in a variety of different roles. Each position has enabled me to serve others by encouraging their growth in faith, in personal coping and in profession. I look forward to where God may lead me on this Wellspring journey."



akaul@wellspringlutheran.com

## **JILL HAISER**

**Vice President, Mission Advancement & Executive Director, Wellspring Lutheran Foundation**

"For me, the mission of Wellspring is so deeply rooted into my heart that I can't help but share our mission with everyone I meet. Each day, I am humbled to see lives transformed through the hope people experience at Wellspring. The work we do is difficult. We often meet people on the worst day of their lives. Knowing that we have a team of people who deeply care about each person, and work tirelessly to make each day less overwhelming than the day before, is a gift. I am honored to serve at an organization that takes human care to the next level."



jhaiser@wellspringlutheran.com



Wellspring & You



Celebrating  
**125**  
YEARS

Timely purpose.  
Timeless mission.

**Wellspring**  
LUTHERAN SERVICES

WELLSPRING LUTHERAN SERVICES

# VIDEO LIBRARY

Some videos may contain sensitive topics. Please review content before sharing with your congregation.

## WELLSPRING OVERVIEW

- Wellspring Lutheran Services, services offered | 2:27  
<https://youtu.be/Pqul9p3Zda8>
- Foster Care - need for foster parents in Michigan and America | 2:43  
<https://youtu.be/DEagLDRlszM>
- Wellspring Faces of Hope | :30  
<https://youtu.be/w3510PiuYLg>
- Family Preservation | 2:33  
<https://youtu.be/EaNIbGb3S7c>
- Music Therapy | :57  
<https://youtu.be/AtKJKqBmR6o>

## FOSTER CARE

- Foster Care FAQ's | time varies for each question  
<https://vimeo.com/album/5292606>
- Davidson Story - 4:33  
*The Davidson family said yes to foster care and welcomed Tiffany into their home. Tiffany and foster mom, Sue, share their story.*  
<https://youtu.be/8ZhrRahlaVIY>
- Reunification Day 2018 | 1:55  
*People gathered outside of Michigan Hall of Justice in Lansing to celebrate the 3<sup>rd</sup> annual statewide reunification day in Michigan, recognizing parents who have worked very hard to get their children home and out of foster care.*  
[https://youtu.be/\\_8x\\_yG3Mhfw](https://youtu.be/_8x_yG3Mhfw)
- What is it like to be a foster parent? | 1:08  
*Steve and Amy Quakkelaar have been foster parents for 16 years and have had around 14 placements over the years.*  
<https://youtu.be/YD6c9H-5kKs>



Celebrating  
**125**  
YEARS

Timely purpose.  
Timeless mission.



# VIDEO LIBRARY

Some videos may contain sensitive topics. Please review content before sharing with your congregation.

## FOSTER CARE, cont'd.

- Testimony from foster parents, Kyle and Jennifer Reidsma | 2:00  
<https://youtu.be/k9RZl2AnweA>
- Foster Parenting, What to expect | 1:33  
<https://youtu.be/DFhZzD6YC3M>
- Foster Parenting – Isaiah Parker, 13 years old enjoys his role as foster brother | 1:31  
<https://youtu.be/AgefogUcct4>
- Foster Care – Dave and Elaine Ghem | 1:41  
<https://youtu.be/rB0uZ-JbuLVs>
- Why foster parent, Sue Davidson answers | 1:27  
<https://youtu.be/agmWHDl8S7Q>
- We need more homes for children | :49  
[https://youtu.be/xxotOziFm\\_Q](https://youtu.be/xxotOziFm_Q)
- Trigg's story, adoption through foster care | 4:52  
<https://youtu.be/VMfFeFzXhYs>
- Stahl Sisters, adoption through foster care | 2:35  
<https://youtu.be/EW6y7An6ptk>
- Adoption through foster care, Stahl story | 6:19  
<https://youtu.be/TfwzhNJht6A>
- Foster Care through the eyes of a child – Parts 1-4  
<https://vimeo.com/album/38333343>

## HOME CARE

- Private Duty (Personal Assistance) Meet Mildred | 5:23  
<https://youtu.be/puvkEngkkwI>
- Volunteer provides support for Saginaw couple | 3:09  
<https://youtu.be/40tUcx7IOk8>

Wellspring & You



Celebrating  
**125**  
YEARS

Timely purpose.  
Timeless mission.

**Wellspring**  
LUTHERAN SERVICES

WELLSPRING LUTHERAN SERVICES

# VIDEO LIBRARY

Some videos may contain sensitive topics. Please review content before sharing with your congregation.

## HOSPICE

- Music Therapy | 1:15  
*Wellspring's music therapist, Corey Musonda shares the gift of music with a hospice patient.*  
<https://youtu.be/BcsP9cfiOVc>
- Camp Hope - Meet Bentley, 5 years old | 1:19  
<https://youtu.be/8p-2RWsEQFE>
- Camp Hope - Free grief camp for kids | 3:39  
[https://youtu.be/Wmf1hg6B\\_Pc](https://youtu.be/Wmf1hg6B_Pc)
- Camp Hope - Villareal brothers | 6:07  
<https://youtu.be/iQxRRhdUMi2Q>
- Camp Hope - Words from a parent | 1:00  
<https://youtu.be/kKBjmQtweMg>
- Camp Hope - Send off 2015 | 3:04  
<https://youtu.be/pevscXluWUJ>
- Camp Hope - Balloon Launch | 2:53  
[https://youtu.be/6zXSmWO\\_m0c](https://youtu.be/6zXSmWO_m0c)

## PAILALEN PARENTING CLASS

- What is Pailalen | 6:30  
<https://youtu.be/T25mzXy5jfk>

## SAGINAW SENIOR LIVING CAMPUS

- Wellspring Saginaw Senior Living Art Fair | 1:33  
<https://youtu.be/NLMavHhkZgg>
- Dining Experience - Saginaw Senior Living Campus | 1:09  
*From start to finish, our Senior Living Campus in Saginaw is committed to making our dining experience special.*  
<https://youtu.be/HRWedg4xkgs>

Wellspring & You



Celebrating  
**125**  
YEARS

Timely purpose.  
Timeless mission.

**Wellspring**  
LUTHERAN SERVICES

WELLSPRING LUTHERAN SERVICES

# VIDEO LIBRARY

Some videos may contain sensitive topics. Please review content before sharing with your congregation.

## SAGINAW SENIOR LIVING CAMPUS, cont'd.

- WWII Veteran honored at Wellspring Saginaw Senior Living Campus | 2:55  
<https://youtu.be/OpcI5PIVXJE>
- Evelyn's Love Story | 1:52  
<https://youtu.be/OtCWBkCuC8E>
- Favorite Christmas Memory | 2:44  
*Residents share their holiday memories.*  
[https://youtu.be/9G\\_2JUuNRr4](https://youtu.be/9G_2JUuNRr4)
- 104 years old, Florence shares her favorite Christmas memory | 1:06  
<https://youtu.be/6J50DF7r3yc>
- Saginaw Senior Living Campus - Independent Living Tour | 1:59  
<https://youtu.be/WVdCzzMFvU4>
- Saginaw Senior Living Campus - Assisted Living Tour | 1:33  
<https://youtu.be/V4PPliuNDEs>
- Saginaw Senior Living Campus Tour | :59  
<https://youtu.be/LmCtBrtpZzU>
- Memory Support, Dementia - Adella's story | 4:55  
<https://youtu.be/ELoz6XapwU4>
- Resident, Ruth, Independent Living | 1:03  
<https://youtu.be/OtYQPkAdPwE>
- Betty, 88, bound to wheelchair and changing lives | 3:44  
<https://youtu.be/ZhBthgYrIn8>

## SKILLED NURSING / REHAB

- Music Therapy, children visit residents in Frankenmuth | 1:17  
<https://youtu.be/WXUNcJwPYU>
- Frankenmuth, Noyce family story | 5:17  
<https://youtu.be/1NAWVDEukKg>

Wellspring & You



Celebrating  
**125**  
YEARS

Timely purpose.  
Timeless mission.



WELLSPRING LUTHERAN SERVICES

# VIDEO LIBRARY

Some videos may contain sensitive topics. Please review content before sharing with your congregation.

## SKILLED NURSING / REHAB, cont'd.

- Monroe/Livonia Woods, skilled nursing, long-term/short-term care | 3:15  
*We show you what to expect.*  
<https://youtu.be/TdyFOhaHDso>

## STAFF TESTIMONIALS

- New Directions, Mr. Brown | 1:12  
<https://youtu.be/B4APS4AVXeA>
- Caregiver, Pamela | 1:05  
<https://youtu.be/brkfrQbajRA>
- Family Preservation, Leonica | 1:12  
<https://youtu.be/1XvZLssCoKc>
- Caregiver, Jeanett | :59  
<https://youtu.be/7EevFIRMRBM>
- Family Preservation, Georgeta | 1:01  
<https://youtu.be/Yqt1XNzq3Fo>
- Hospitality Representative, Cyndi | 1:21  
<https://youtu.be/s8uSF3Zte6Q>

## VOLUNTEERS

- Frankenmuth: Volunteer of the year, Margo Gricar | 2:57  
*Volunteering for 25 years in the beauty shop at Wellspring Skilled Nursing in Frankenmuth.*  
<https://youtu.be/t1POngYwCtQ>
- Frankenmuth: Irene Rodammer, Faces of Hope Award | 2:41  
<https://youtu.be/C-usX2HJOTM>
- Monroe: Bonnie Kregel visits residents every week | 3:29  
<https://youtu.be/rtoapana9bk>

Wellspring & you



Celebrating  
125  
YEARS

Timeless purpose.  
Timeless mission.



WELLSPRING LUTHERAN SERVICES


# VIDEO LIBRARY

Some videos may contain sensitive topics. Please review content before sharing with your congregation.

## VOLUNTEERS, cont'd.

- Livonia Woods: Al Eardley gives back | 5:00  
<https://youtu.be/AZTVwkNkzDs>
- Monroe: Meet Lunette, director of housekeeping | 2:26  
<https://youtu.be/4V7FH6m72LQ>
- Ladies Auxiliary Christmas Caring | :51  
<https://youtu.be/TcKkxnpm72c>
- Liz Studley, University of Michigan and Henry Ford | 1:15  
<https://youtu.be/2ex5AwN6fc0>
- Frankenmuth Auxiliary celebrates 50 years | 4:40  
[https://youtu.be/Zs2cphP\\_Yz4](https://youtu.be/Zs2cphP_Yz4)
- Camp Hope Bears: Speedy Sew, Saginaw | 2:33  
<https://youtu.be/5HqH5iggSOc>

## HOW TO SUBSCRIBE TO WELLSPRING'S YOUTUBE CHANNEL YouTube

1. Go to [youtube.com](https://www.youtube.com) and click "Sign In" located in the upper right-hand corner. You cannot subscribe to a YouTube channel without an account. If you don't have one, click "Create account" and follow the prompts.
2. Once signed in, you may use the search box to type "Wellspring Lutheran Services" to navigate to our channel.
3. Once you've located the channel, click the "Subscribe" button. 

Wellspring & You

Celebrating  
**125**  
YEARS

Timely purpose.  
**Timeless mission.**



WELLSPRING LUTHERAN SERVICES

# FACES OF HOPE



**FOR 125 YEARS,** Wellspring Lutheran Services has come alongside people in Michigan who are in need of compassionate human care services. You may call them brother, sister, neighbor or friend.

## We call them the Faces of Hope.

Join us for an evening to hear about the work Wellspring does across Michigan on behalf of children, families and seniors. **You will hear stories of hope directly from the people we serve.** And you will learn how your support of Wellspring impacts people in your own community.

Together, we can change lives, build strong families and transform communities.  
**Will you join us?**

## FACES OF HOPE BENEFIT DINNER

GREAT LAKES BAY REGION  
Tuesday, January 22, 2019

SOUTHEAST MICHIGAN  
Thursday, October 24, 2019

**Bavarian Inn Motor Lodge**  
One Covered Bridge Lane | Frankenmuth, Michigan 18600 Haggerty Road | Livonia, Michigan

**Schoolcraft College** VisTaTech Center  
18600 Haggerty Road | Livonia, Michigan

Email [foundation@wellspringlutheran.com](mailto:foundation@wellspringlutheran.com) for more information.

[wellspringlutheran.com](http://wellspringlutheran.com) | [wellspringfostercare.com](http://wellspringfostercare.com)