



# HOUSE of REPRESENTATIVES

## STATE OF MICHIGAN

### Appropriations Requests for Legislatively Directed Spending Items

---

1. The sponsoring representative's first name:  
Tim
2. The sponsoring representative's last name:  
Kelly
3. The cosponsoring representatives' names. All cosponsors must be listed. If none, please type 'n/a.' A signed letter from the sponsor approving the co-sponsorship and a signed letter from the member wishing to co-sponsor are required. Attach letters at question #9 below.  
n/a
4. Name of the entity that the spending item is intended for:  
Village of Maple Rapids
5. Physical address of the entity that the spending item is intended for:  
118 W. Adelaide, P.O. Box 200, Maple Rapids, MI 48853
6. If there is not a specific recipient, the intended location of the project or activity:  
Maple Street Bridge
7. Name of the representative and the district number where the legislatively directed spending item is located:  
Tim Kelly, 93rd District
8. Purpose of the legislatively directed spending item. Please include how it provides a public benefit and why it is an appropriate use of taxpayer funding. Please also demonstrate that the item does not violate Article IV, S 30 of the Michigan Constitution.  
To repair the main bridge that connects numerous communities and schools.
9. Attach documents here if needed:  
Attachments added to the end of this file.
10. The amount of state funding requested for the legislatively directed spending item.  
4800000

11. Has the legislatively directed spending item previously received any of the following types of funding? Check all that apply.

["None"]

12. Please select one of the following groups that describes the entity requesting the legislatively directed spending item:

Local unit government

13. For a non-profit organization, has the organization been operating within Michigan for the preceding 36 months?

Not applicable

14. For a non-profit organization, has the entity had a physical office within Michigan for the preceding 12 months?

Not applicable

15. For a non-profit organization, does the organization have a board of directors?

Not applicable

16. For a non-profit organization, list all the active members on the organization's board of directors and any other officers. If this question is not applicable, please type 'n/a.'

n/a

17. "I certify that neither the sponsoring representative nor the sponsoring representative's staff or immediate family has a direct or indirect pecuniary interest in the legislatively directed spending item."

Yes, this is correct

18. Anticipated start and end dates for the legislatively directed spending item:

Repair will commence when funding is secured.

19. "I hereby certify that all information provided in this request is true and accurate."

Yes

# BRIDGE

## MAPLE STREET BRIDGE REPLACEMENT MAPLE RAPIDS, MI

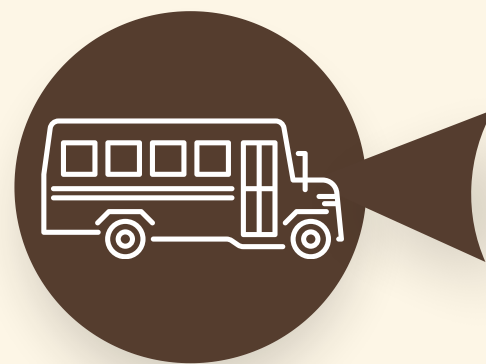
**\$4.8**  
MILLION

Cost to replace the  
Maple Street Bridge



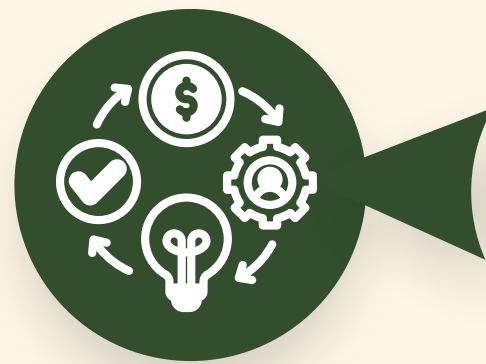
### Emergency Services

Maple Rapids Fire and Ambulance spans a wide range of coverage and the detour is causing major delays in reaching emergencies. The detour is impacting Clinton County and Gratiot County, which is north of the bridge.



### Community and Schools

Lifespan of the bridge is limited and will soon become impassable, which would be a hardship on the community and extend not only to Maple Rapids, but the surrounding communities and schools.



### Business

Restricted load limits reduced **from 40 ton to 24 ton** causing vehicles over 24 ton to take a 10-12 mile detour causing increased emissions and is less efficient for businesses who use the bridge daily.

A 3 Span Concrete Bridge  
constructed in 1980  
Length 137.8' | Width 30.5'

### 5-DAY TRAFFIC STUDY | 03.27.23 TO 03.31.23



#### 5,662 Vehicles

1,132 / avg. per day  
Speed Limit 25 mph  
Average Speed 28 mph



#### 0' to 8' Length

41.9% of Total Traffic (2,370)



#### 8' to 20' Length

52% of Total Traffic (2,946)



#### 20' to 40' Length

3.4% of Total Traffic (194)



#### 40' to 70' Length

2.5% of Total Traffic (143)



#### > 70' Length

0.2% of Total Traffic (9)

### Village of Maple Rapids

118 W Adelaide  
PO Box 200  
Maple Rapids, MI 48853  
Phone: 989.682.9227  
Fax: 989.682.4411



### Bridge Rating

Downgraded to a '4', which is the lowest in the Bridge Rating Scale

