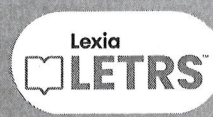


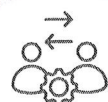
# A Comparison of Literacy Training Programs



## Training Focus

Hands-on, practical Orton-Gillingham (OG)-based instruction for immediate classroom use.

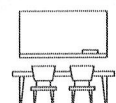
Deep dive into research and theory behind literacy instruction.



## Approach

Direct, explicit, and multi-sensory methods for phonics, phonemic awareness, fluency, vocabulary, and comprehension.

Theoretical understanding of literacy development and structured literacy principles.



## Classroom Application

Teachers leave with materials and strategies they can implement immediately.

Focuses on long-term understanding, with application left to teachers' discretion.



## Time Commitment

Shorter, intensive training options (30–45 hours).

Long-term commitment (1–2 years, multiple sessions).



## Who It Is For

K–6 teachers, interventionists, special educators, parents, and administrators looking for actionable classroom strategies.

Educators and administrators seeking a deeper understanding of literacy science before implementing strategies.



## Assessment & Fidelity

Built-in assessments and progress monitoring tools for direct student impact.

Teachers must translate learned concepts into their own assessment practices.



## Cost & Accessibility

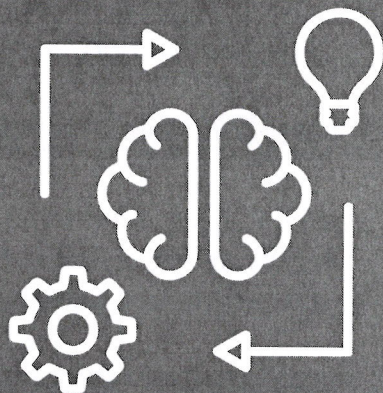
More cost-effective and efficient for schools seeking immediate change.

More expensive and requires significant time investment.





## IMSE OG+ and LETRS: A Powerful Combination for Structured Literacy



While IMSE OG+ and LETRS are often viewed as separate professional development programs, they can work together to create a comprehensive literacy plan for educators.

IMSE OG+ provides immediate classroom application with structured literacy instruction, while LETRS offers in-depth theoretical knowledge to enhance teachers' understanding of literacy science.



Combines research-based literacy science (the why) with hands-on, structured literacy instruction (the how), equipping teachers with both the knowledge and the tools to implement effective reading instruction.



Provides a strong foundation in literacy theory and research (the why), focusing on the cognitive science behind reading development without an immediate classroom application component.



Phonemic awareness, phonics, decoding, encoding, fluency, comprehension, and spelling instruction using Orton-Gillingham methodology.



Theoretical foundations of the science of reading, reading brain research, and structured literacy principles.



### IMSE OG+ – Immediate Results

Teachers complete training with ready-to-use strategies that can be implemented in their classrooms the very next day.

Students immediately benefit from structured literacy instruction that is explicit, multisensory, and systematic.

Educators feel confident and prepared to apply their learning, reinforcing best practices with ongoing support and resources.