

**Executive Budget Recommendation
Michigan Department
of
Community Health
Overview
Fiscal Year 2016**



**Presentation to House and Senate Appropriations
Subcommittees on Community Health
February 17, 2015**

Healthcare is an Economic Force in Michigan

Health Care Industry is one of Michigan's Largest Private-Sector Employers¹

- Provides more than 570,000 direct jobs¹
 - Hospitals employing nearly 225,000¹
 - Two-thirds of the projected fastest growing occupations are health care related²
 - Health care employment as a percentage of total Michigan employment is 11%³
- 1 million people who collectively earn more than \$52 billion a year in wages, salaries and benefits¹

Health Care Industry Generates \$7.6 Billion in Federal and State Tax Revenues¹

Health Care Spending Per Capita in Michigan is \$8,971³

Total Health Care Spending in Michigan is \$91.4 Billion³

Our Guiding Principles

Mission

The Michigan Department of Community Health will protect, preserve, and promote the health and safety of the people of Michigan with particular attention to providing for the needs of vulnerable and under-served populations.



Vision

Improving the experience of care, improving the health of populations, and reducing costs of health care.

Leadership, Excellence, Teamwork

Michigan Department of Community Health 2015 Strategic Priorities

Promote and Protect Health, Wellness, and Safety

Improve Outcomes for Children

Transform the Healthcare System

Strengthen Workforce and Economic Development

2015 Strategic Priorities

Promote and Protect Health, Wellness, and Safety

- Improve access to federal benefits and local services for Veterans.
- Ensure access to culturally and linguistically appropriate services for all Michigan residents.
- Improve care coordination for individuals with high-frequency health care use for multiple chronic health conditions.
- Increase access to dental care.
- Continue to address waiting lists for aging services.
- Develop a statewide trauma system.
- Adopt the Medication Assisted Treatment Guidelines.
- Measure outcomes for improved behavioral health across payer and managing systems.
- Reduce prescription drug abuse and increase prescription compliance.
- Increase immunization rates.
- Continue to implement the 4x4 Plan to reduce obesity and further collaborate with partners.
- Implement the recommendations of the Mental Health and Wellness Commission.
- Improve preparedness of local communities in emergency situations.
- Reduce disparities in health outcomes.
- Provide comprehensive population health monitoring.
- Encourage adoption of healthy behaviors and use of preventive services by newly-insured populations.
- Facilitate greater knowledge and understanding of behavioral health diseases and disorders.

2015 Strategic Priorities

Improve Outcomes for Children

- Reduce substance use disorders with children and youth.
- Enhance efforts to identify and improve early intervention mental health services, including autism, for children and youth.
- Enhance efforts to improve oral health of children.
- Support increasing the number of infants who are born healthy and thrive through ongoing implementation of Michigan's Infant Mortality Reduction Plan.
- Implement cross-system collaborative strategies to improve health outcomes from preconception through adolescence.
- Collaborate with other state agencies to develop a strategy to eliminate human trafficking.

2015 Strategic Priorities

Transform the Healthcare System

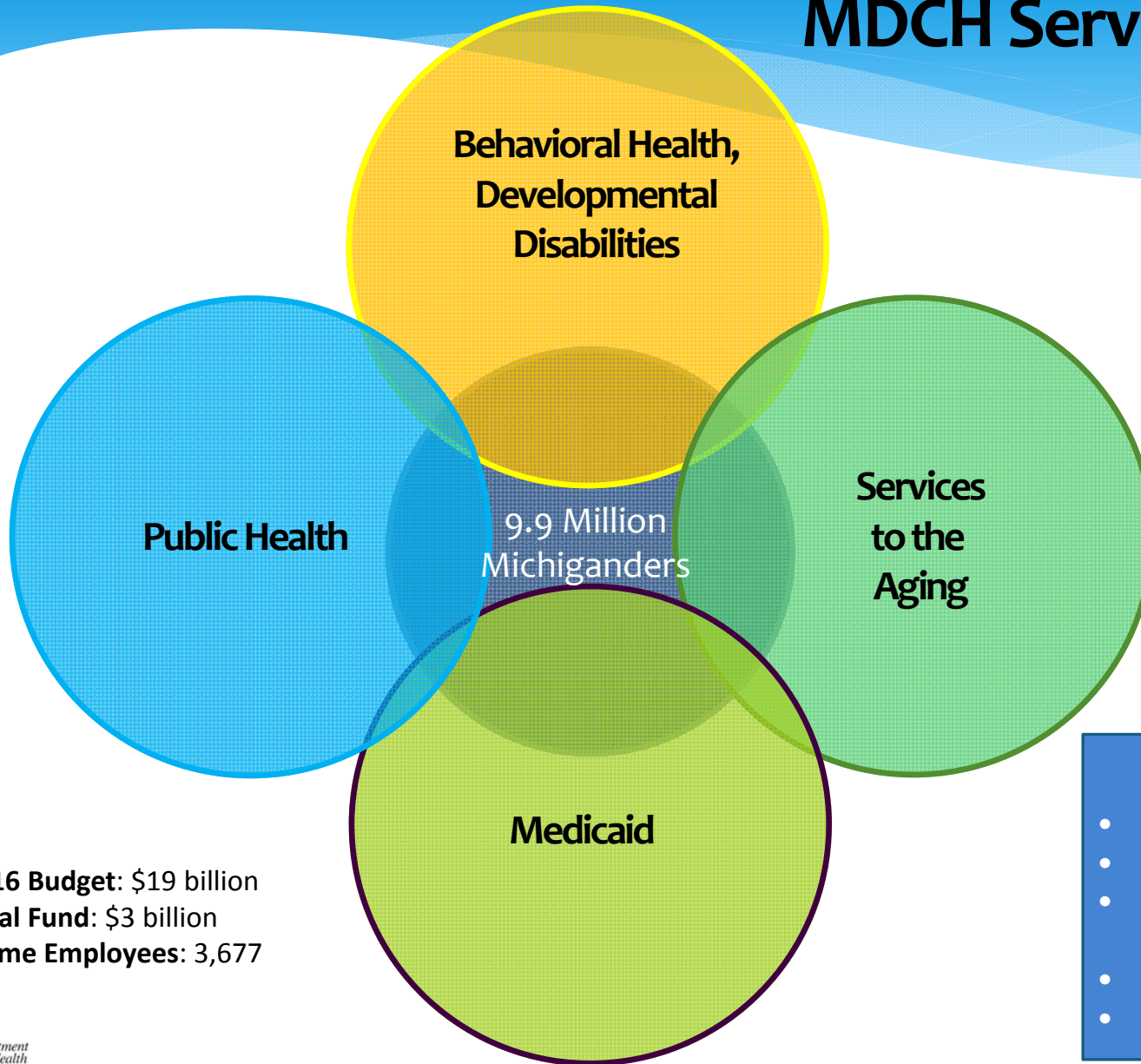
- Strengthen mental health, substance abuse, and physical health integration to reduce chronic disease and comorbidities.
- Support the development of Health Information Technology and Health Information Exchange efforts to improve communication, efficiency, customer experience, and health outcomes.
- Modernize information technology systems to ensure they are current, deliver timely results, and have increased inter-operability.
- Modernize the secure sharing and management of data.
- Improve prevention and identification of fraud, waste and abuse to improve program accountability.
- Implement the requirements of the Healthy Michigan Plan and continue efforts to enroll Michiganders.
- Implement the dual eligibles demonstration (integrated care of Medicaid and Medicare).
- Create an interdepartmental integrated system of long term care.
- Organize healthcare planning, systems and programs by prosperity regions.
- Implement the Blueprint for Health Innovation.
- Support an integrated multidisciplinary delivery system with a focus on inter-professional, person-centered care.
- Streamline payment and reimbursement processes for all providers that focus on quality and outcomes, rather than quantity.
- Procure Health Maintenance Organization contracts to service the healthcare needs in Medicaid Health Plans.

2015 Strategic Priorities

Strengthen Workforce and Economic Development

- Increase leadership development, training, mentoring and education enhancement opportunities for employees.
- Support competitive employment opportunities to retain a creative and diversified workforce.
- Implement strategies to support diversity and inclusion as cornerstones of our department.
- Improve communication and employee engagement across the department.
- Utilize measures and metrics to monitor progress, make decisions, and drive performance.
- Support a multitier interdisciplinary healthcare workforce.
- Focus on transparency and open communication with stakeholders and partner agencies.
- Support a culture of process improvement to optimize customer experience.
- Develop strategies for leveraging available health professionals and existing resources to relieve health professional shortages.
- Implement strategies to increase the safety of employees.

MDCH Service Structure



FY 2016 Budget: \$19 billion
General Fund: \$3 billion
Full Time Employees: 3,677

Supported by:

- Operations
- Health Policy & Innovation
- Health Planning & Organizational Support
- Inspector General
- Commissions

MDCH House Budget Presentation Schedule

<u>Administration</u> MDCH Overview	<u>Presenter</u> Nick Lyon MDCH Director	February 17
Behavioral Health and Developmental Disabilities	Lynda Zeller Senior Deputy Director	February 24
Medicaid	Steve Fitton Senior Deputy Director	March 3
Office of Services to the Aging	Kari Sederburg OSA Director	March 3
Public Health	Sue Moran Senior Deputy Director	March 10
Health Policy and Innovation	Elizabeth Hertel Health Policy Director	March 10

MDCH Senate Budget Presentation Schedule

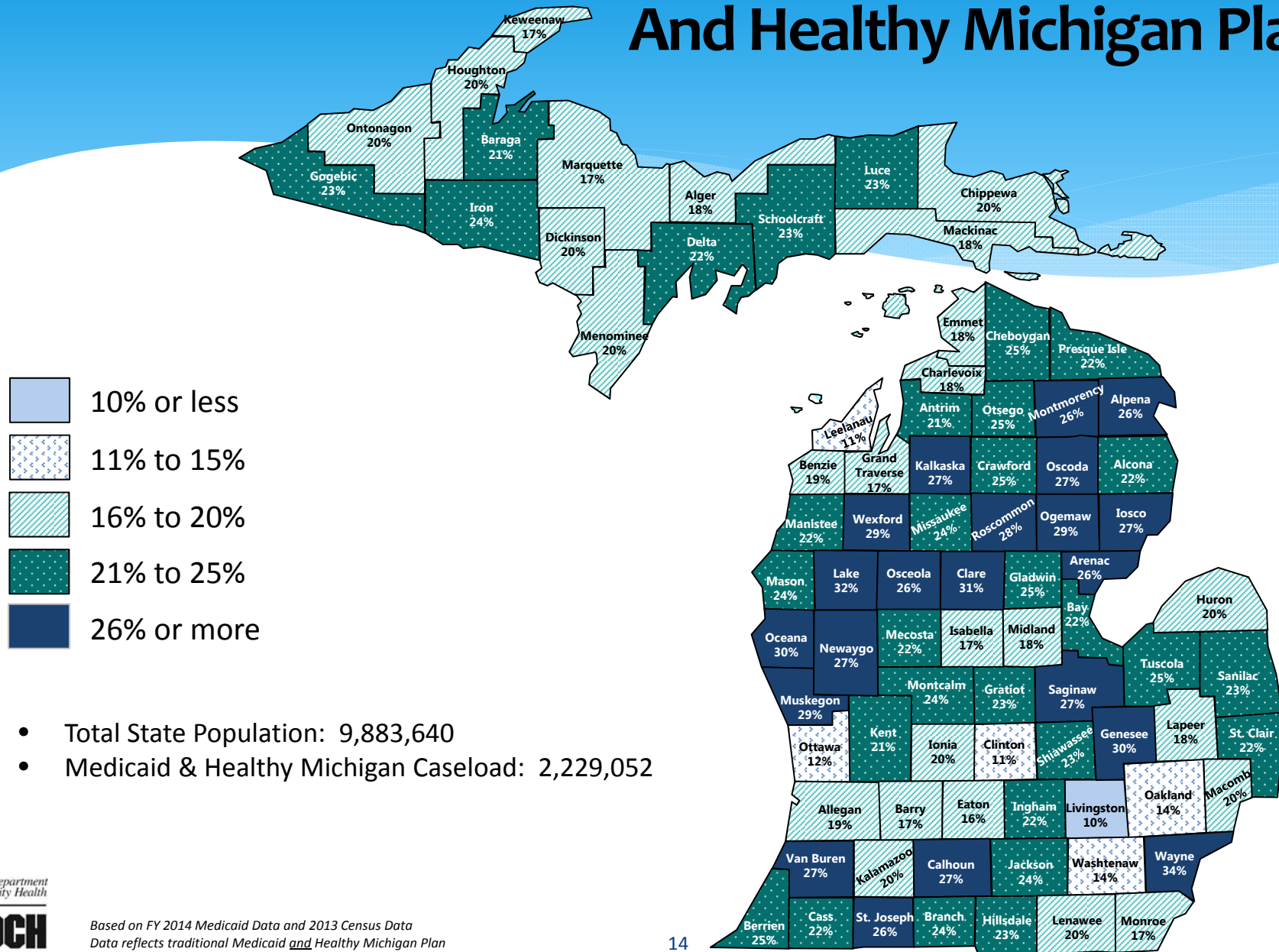
<u>Administration</u> MDCH Overview	<u>Presenter</u> Nick Lyon MDCH Director	February 17
Health Policy and Innovation	Elizabeth Hertel Health Policy Director	February 17
Behavioral Health and Developmental Disabilities	Lynda Zeller Senior Deputy Director	February 24
Public Health	Sue Moran Senior Deputy Director	February 24
Medicaid	Steve Fitton Senior Deputy Director	March 3
Office of Services to the Aging	Kari Sederburg OSA Director	March 3

MDCH Services Statistics

- 1,996,185 older adults (aged 60+) in Michigan
- 85+ age group is fastest growing
- 10,000,000 home delivered/congregate meals provided to aging population in Michigan
- 6,900 caregivers provided 680,000 hours of service
- 19,700 older adults received 680,000 hours of services in the home
- 9,400 older adults participated in volunteer programs
- 2,079 children received autism diagnostic services
- 1,561 children diagnosed with Autism Spectrum Disorder
- 41,198 children served in Children's Special Health Care Services (CSHCS)
- 251,716 eligible Women, Infants and Children (WIC) receive WIC services each month
- 1,638,789 doses of vaccine in the Vaccine for Children program valued at \$86,215,268 distributed to providers
- 74% of children aged 19 through 35 months of age completed the recommended vaccine series (MCIR)
- 24: Michigan's 2013 rank (70.0) based on a national childhood immunization survey
- 86,995 Infectious Disease Specimens Tested
- 125,205 Newborn Screening specimens tested
- 34,826 tests completed for blood lead levels and environmental lead exposure
- 155,919 blood tests for young children reported to MDCH in FY14
- 1,100,000 hearing and vision screenings conducted yearly for Pre-K and school aged children
- 6,700,000 lab services provided to over 247,026 individuals.
- 360,000 new vital records events recorded each year
- 32 million records in vital records depository dating to 1867
- 1,842,955 total average eligibles-traditional Medicaid
- 1,139,625 children served in Medicaid
- 348,045 disabled adults served in Medicaid
- 546,807 individuals enrolled in Healthy Michigan Plan
- 1,863,525 school-based direct service procedures
- 1,627,138 calls handled annually by Michigan Enrolls
- 3,026 women using Maternal Outpatient Medical Services program each month
- 29,145 nursing home residents
- 541,781 children currently enrolled in Healthy Kids Dental
- 35,075 currently enrolled in MI Child
- 251,019 people served by CMHSPs and PIHPs
- 5 state operated hospitals and centers
- 2,102 licensed psychiatric beds in the community for adults; 247 for children
- 8,364 allegations investigated, processed, and resolved by Office of Recipient Rights
- 42 Developmental Disabilities Council grants
- 709 received problem gambling assistance
- 288,000 participated in Substance Use Prevention Programs
- 1,265 claims accepted and processed for crime victims
- 73,713 cases worked by Victim Advocates in Prosecutor Offices

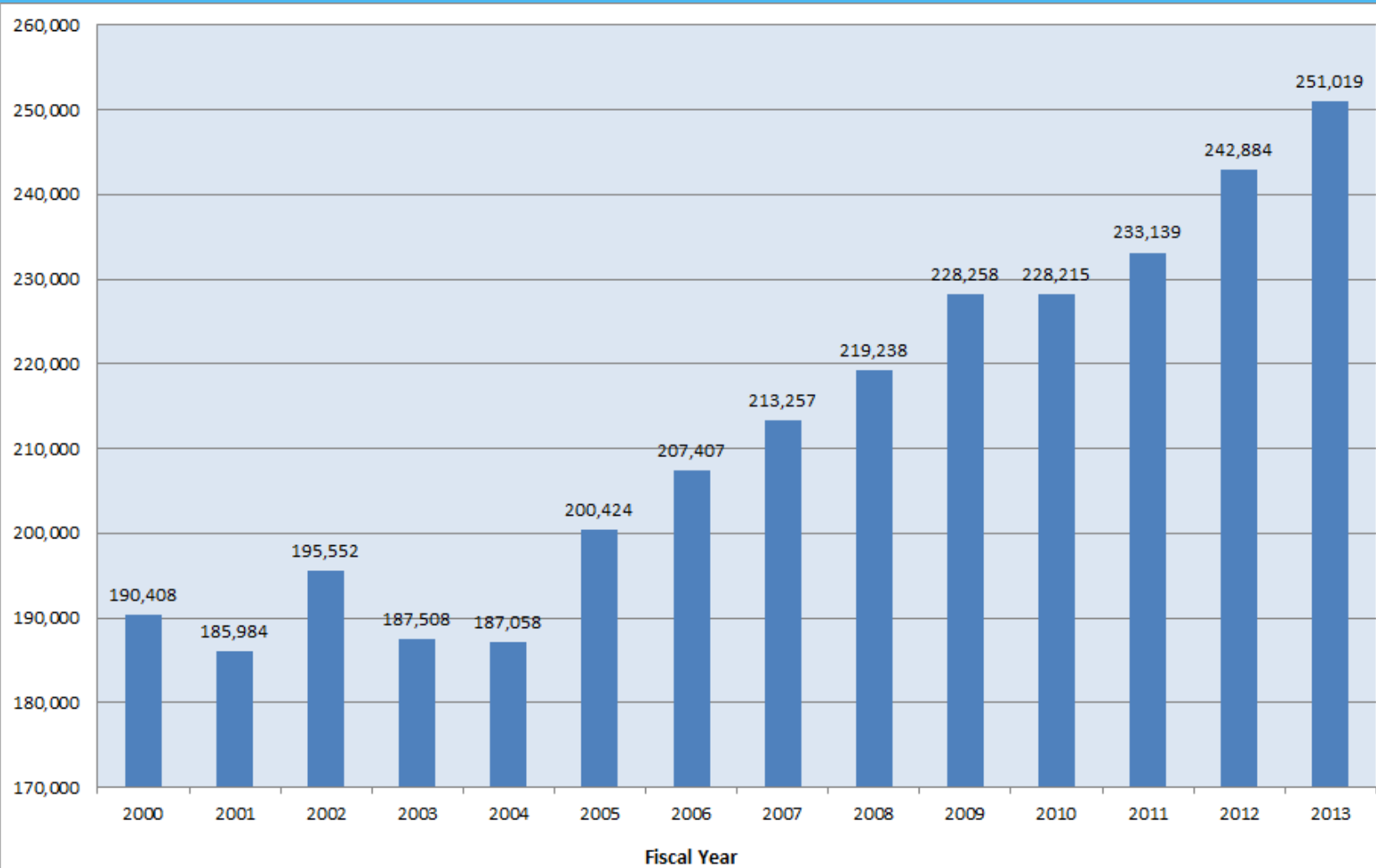
Examples of Services Provided to Michigan Citizens

Percentage of Population Served by Medicaid And Healthy Michigan Plan



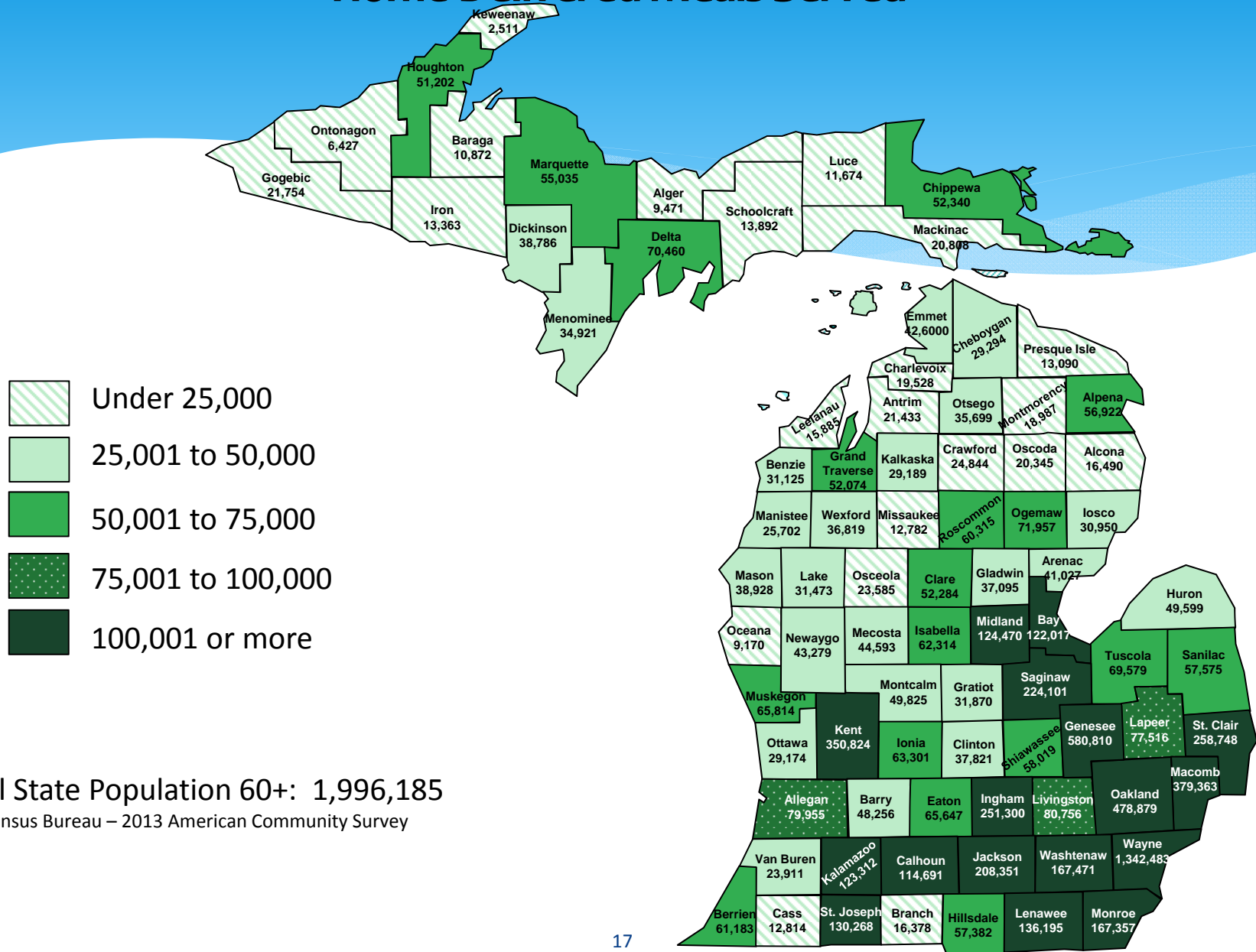
- Total State Population: 9,883,640
- Medicaid & Healthy Michigan Caseload: 2,229,052

Michigan Public Behavioral Health System Individuals Served by Community Mental Health



Services Provided to Michigan's Aging Population

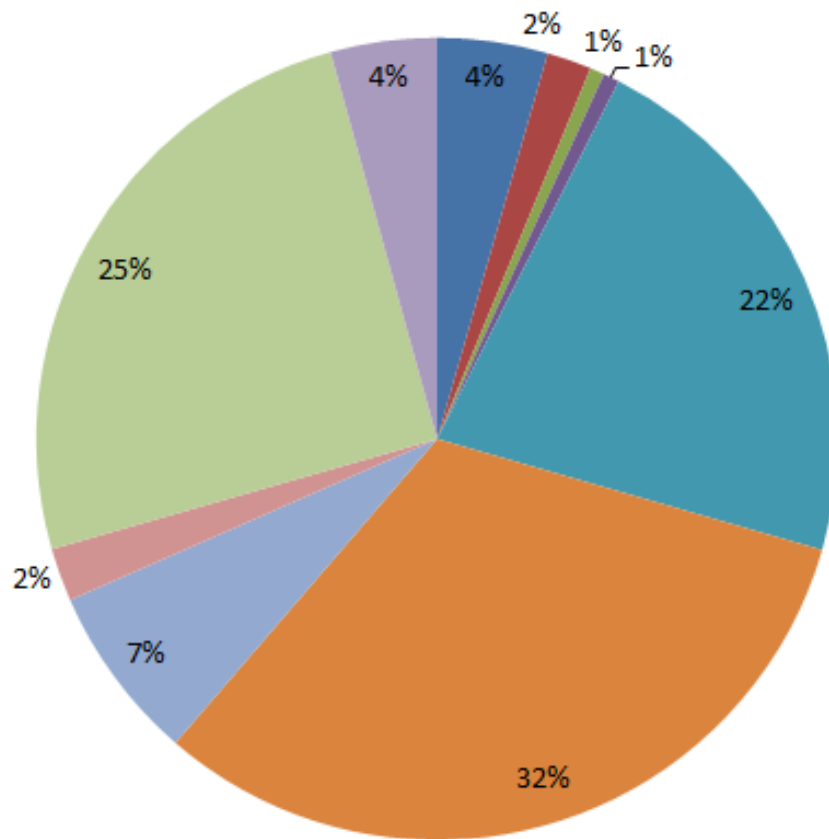
Home-Delivered Meals Served



Total State Population 60+: 1,996,185
 U.S. Census Bureau – 2013 American Community Survey

Services Provided by Local Health Departments

Program Title and Number of Services Provided

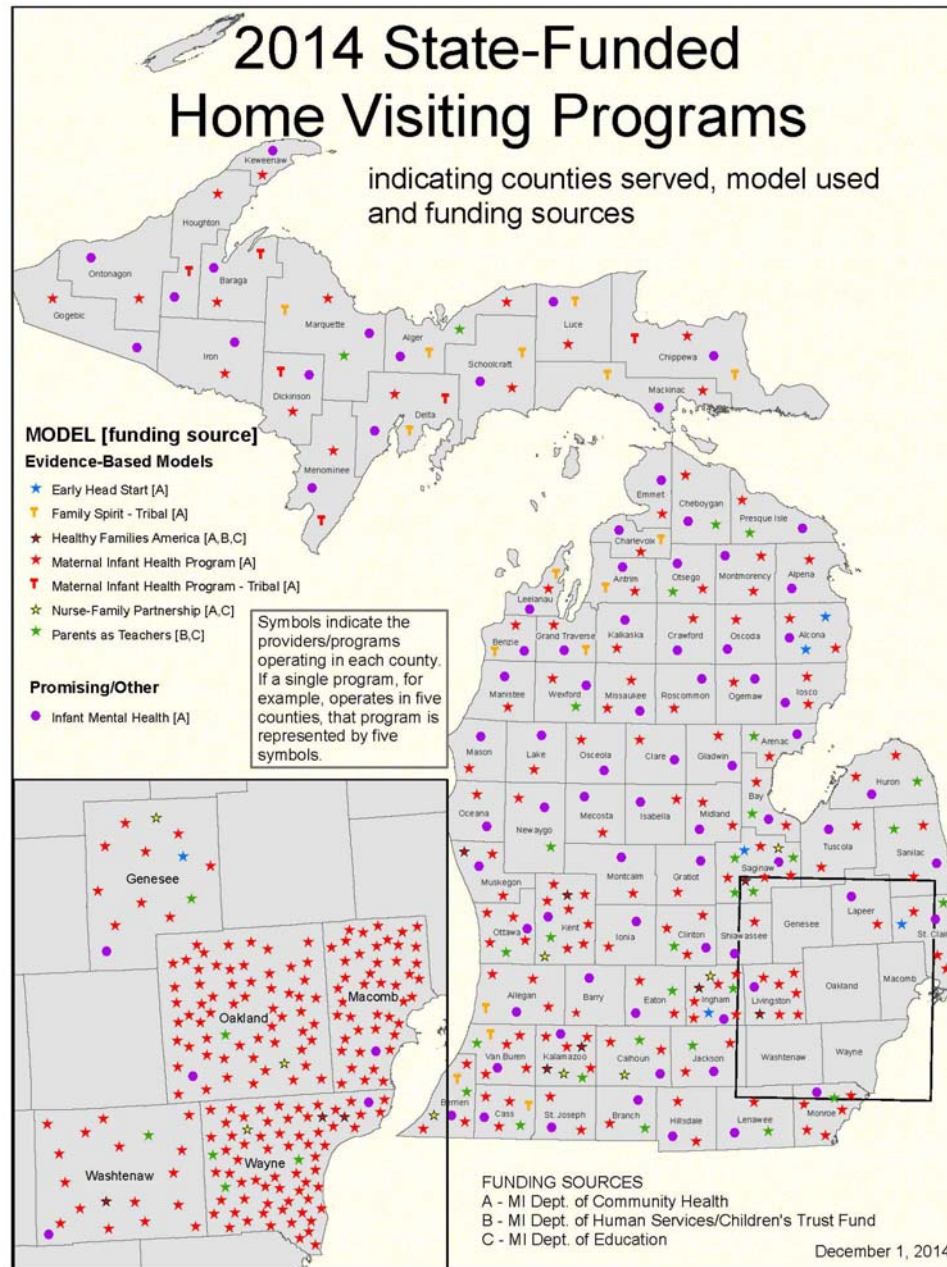


- Food Inspections - 86,838
- Drinking and Public Water Supply Permits & Inspections - 35,153
- Beach Monitoring & Inspections - 11,400
- Septic System Permits - 12,662
- Hearing Screenings - 428,668
- Vision Screenings - 621,362
- Sexually Transmitted Diseases Tested & Treated - 138,540
- Human Immunodeficiency Virus Tests & Diagnoses - 41,758
- Immunizations - 490,586
- Communicable Diseases (Non-STD) Reported - 83,500

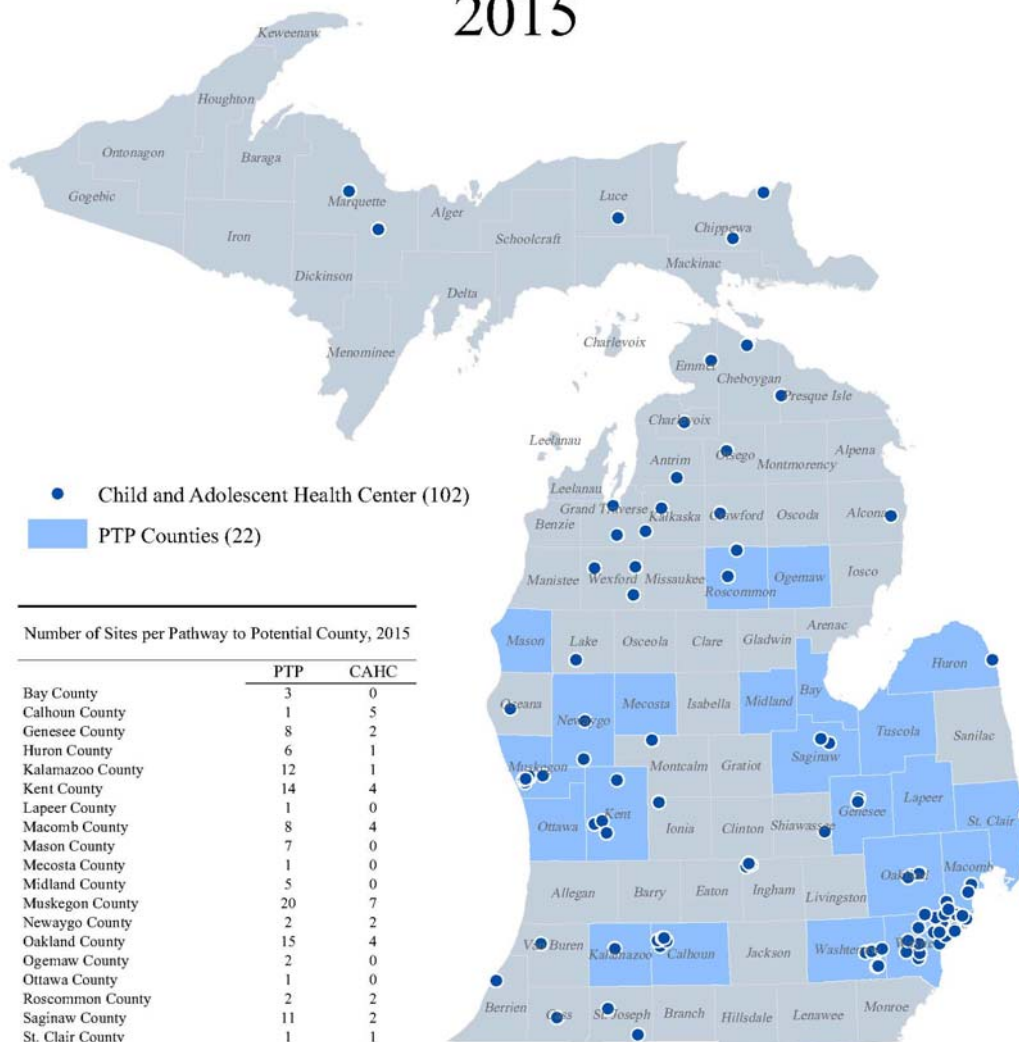
Total Services Provided:
1,950,467

2014 State-Funded Home Visiting Programs

indicating counties served, model used and funding sources



Child and Adolescent Health Centers and Pathways to Potential Counties 2015



Number of Sites per Pathway to Potential County, 2015

	PTP	CAHC
Bay County	3	0
Calhoun County	1	5
Genesee County	8	2
Huron County	6	1
Kalamazoo County	12	1
Kent County	14	4
Lapeer County	1	0
Macomb County	8	4
Mason County	7	0
Mecosta County	1	0
Midland County	5	0
Muskegon County	20	7
Newaygo County	2	2
Oakland County	15	4
Ogemaw County	2	0
Ottawa County	1	0
Roscommon County	2	2
Saginaw County	11	2
St. Clair County	1	1
Tuscola County	10	0
Washtenaw County	1	6
Wayne County	88	27
Total	219	68

Status of FY 2015 Initiatives

Healthy Kids Dental Expansion

Mental Health and Wellness Commission

Integrated Care for Duals – MI Health Link

Jail Diversion

Aging Services

Health and Wellness Initiatives

Blueprint for Health Innovation

Autism Coverage

Healthy Michigan Plan

Status of FY 2015 Initiatives

Healthy Kids Dental Expansion

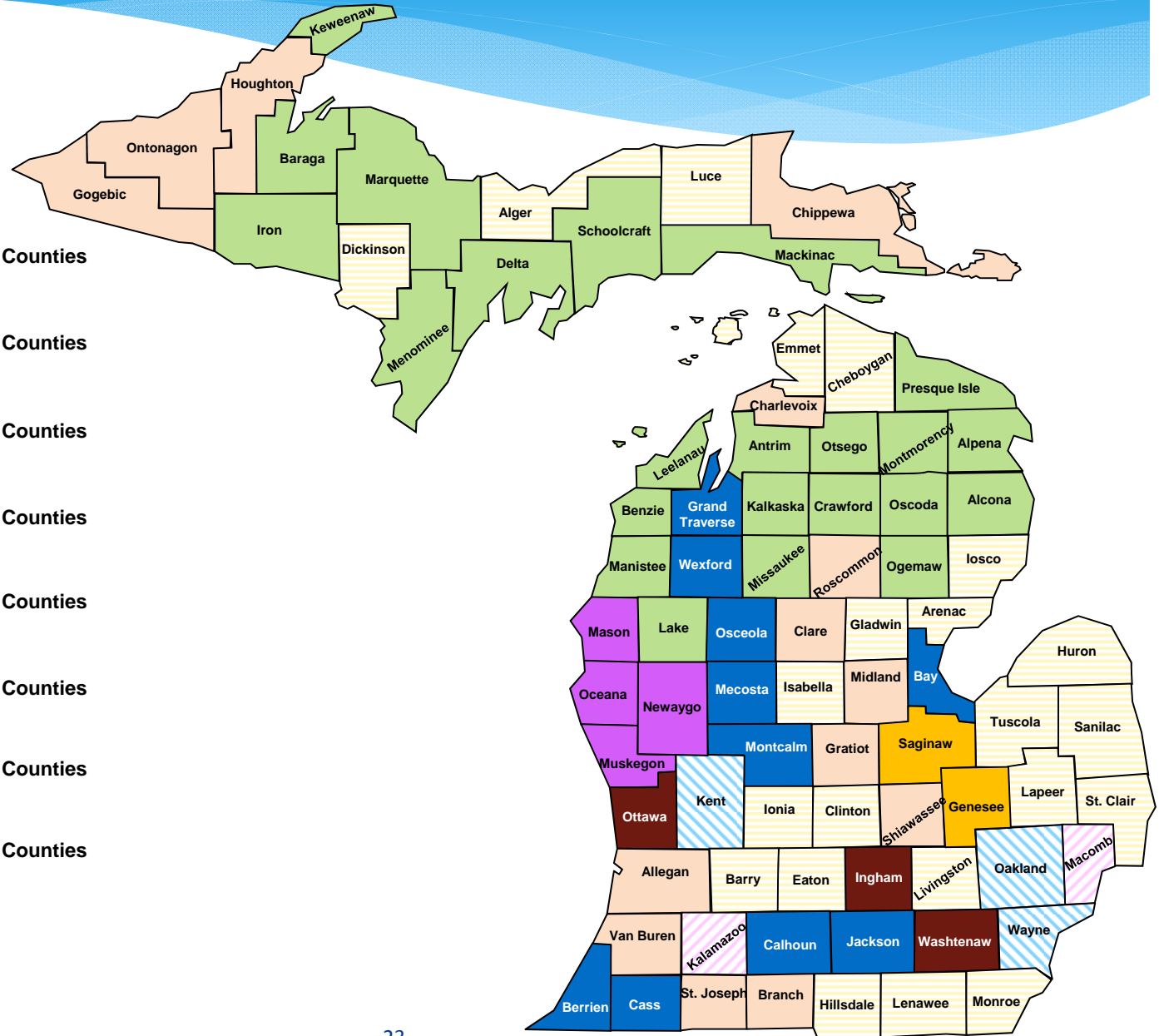
Healthy Kids Dental expanded to 2 additional counties effective 10/01/2014

- Counties added: Macomb and Kalamazoo
- 85,500 children added in the FY15 expansion
- 22,000 in the 2 new counties have already received services
- 80 counties total now covered

Healthy Kids Dental Expansion Map

2000 - 2014

-  Healthy Kids Dental Counties
May 1, 2000
22 counties
-  Healthy Kids Dental Counties
October 1, 2000
15 counties
-  Healthy Kids Dental Counties
May 1, 2006
22 counties
-  Healthy Kids Dental Counties
July 1, 2008
2 counties
-  Healthy Kids Dental Counties
February 1, 2012
4 counties
-  Healthy Kids Dental Counties
October 1, 2012
10 counties
-  Healthy Kids Dental Counties
October 1, 2013
3 counties
-  Healthy Kids Dental Counties
October 1, 2014
2 counties
-  Not Covered
3 counties



Mental Health and Wellness Commission

Bipartisan Commission created to strengthen the mental health system

- Substance abuse credentialing
- Care coordination
- Special education funding flexibility
- Interagency Council on Homelessness creation
- Veterans Trust Fund expansion

Status of FY 2015 Initiatives

Integrated Care for Duals – MI Health Link

- **Individuals eligible for both Medicare and Medicaid**
- **Improve quality and access to care**
- **Align services, rules, and funding**
- **Launch in four regions in two phases:**
 - **Phase 1 - enrollment began February 2015**
 - Upper Peninsula
 - Southwest
 - **Phase 2 - enrollment begins April 2015**
 - Macomb County
 - Wayne County

Status of FY 2015 Initiatives

Jail Diversion

- **Council created February 20, 2013**
- **Lieutenant Governor Brian Calley, Chair**
- **Diversion Council Action Plan-2014-2015**
 - Pre-booking, In Jail Treatment, Post Booking, Diversion, Re-entry, infrastructure
 - Completed 11 major milestones in 2014 (examples: Juvenile Justice plan development, Uniform Behavioral Consent implementation, five community based pilots)
- **Nine pilot counties funded in 2015 totaling \$3.2M**
 - Barry, Berrien, Detroit, Wayne, Kalamazoo, Kent, Marquette, Monroe, Oakland, St. Joseph
 - Evaluation by Michigan State University – Target completion February 1, 2016.
 - Recidivism
 - Length of incarceration stay
 - Diversion program effectiveness

Status of FY 2015 Initiatives

Aging Services

No Wait State for Aging Services

- **Funding provided in the Fiscal Year 2015 budget to address waiting lists**
- **Vital services to help seniors remain in their own homes**
- **Home-delivered “Meals on Wheels”**
 - FY14: More than 400 on waiting list
- **In-home Services**
 - FY14: More than 3,200 on waiting list

Status of FY 2015 Initiatives

Aging Services

Elder Abuse Prevention & Awareness

- **Support of Ongoing Elder Abuse Prevention/Detection Efforts**
 - Pilot programs in Eaton, Ingham, Clinton and Barry Counties.
 - Deployment of interactive web-based screening tools or applications for tablets and smartphones.
- **Statewide Trainings on Elder Abuse Laws & Reporting**
 - Expand Michigan's Adult Abuse and Neglect Prevention (AANP) training and awareness program.
- **Review of Current Elder Abuse System**
 - Feasibility study to develop an integrated elder abuse reporting system and implement an ongoing state-level oversight stakeholder body.

Status of FY 2015 Initiatives

Health & Wellness Initiatives

Obesity Initiative

- Reduce Childhood Obesity with a focus on Educational Environments
- Expand the Role of Health Care System in Obesity Prevention
- Make Physical Activity a Routine Part of Daily Life
- Make Healthy Foods the Routine, Easy Choice

Healthy Babies

- Home Visitation Programs have been expanded over the last year to help promote healthier babies and reduce Infant Mortality
- New home visiting programs in rural areas in the UP and Northern lower peninsula are being established; the Healthy Families America model was chosen by local partners in order to fill a gap in the local system capacity to serve families with a higher level of needs

Lead Abatement

- The FY 2015 Goal is to abate 150 Homes
 - 51 homes completed since 10/1/14

Status of FY 2015 Initiatives

Blueprint for Health Innovation

The Opportunity

- Federal Funding for Design and Testing of new payment and service delivery models
- Michigan awarded \$70 million over 4 years

The Goals

- Strengthen Primary Care
- Provide Coordinated Care
- Build Capacity within Communities
- Improve Systems of Care
- Reduce Administrative Complexity
- Affordability

The State Innovation Model (SIM)

- Michigan's Patient Centered Medical Home Model
- Accountable Systems of Care
- Community Health Regions
- Payment Systems
- Health Information and Process Improvement Infrastructure

Status of FY 2015 Initiatives

Medicaid and MiChild Autism Coverage

- **Effective April 1, 2013**
- **Covers children age 18 months through 5 years**
- **Provides Applied Behavioral Analysis (ABA) Services to those with a medical diagnosis of Autism Spectrum Disorder (ASD)**
- **1,004 children enrolled in Medicaid/MiChild Autism ABA Benefit**
- **Board Certified Behavior Analysts (BCBAs)**
 - 246 BCBAs in Michigan as of December 31, 2014
 - 108% increase from 118 in April, 2012

Status of FY 2015 Initiatives

Healthy Michigan Plan

Michigan's Unique and Innovative Solution

- **Provides health care benefits for Michiganders:**
 - Ages 19-64
 - Not eligible for Medicaid or Medicare
 - Earning up to 133% of Federal Poverty Level
- **Emphasizes personal responsibility**
 - Cost sharing
 - Incentives for lifestyle choices to maintain or improve health
 - Launched April 2014
- **Over 530,000 enrolled**
- **Within first nine months:**
 - Almost 350,000 primary and preventative care visits
 - Over 26,000 mammograms
 - Over 12,000 colonoscopies

MDCH 2016 Budget Recommendation

(in millions)

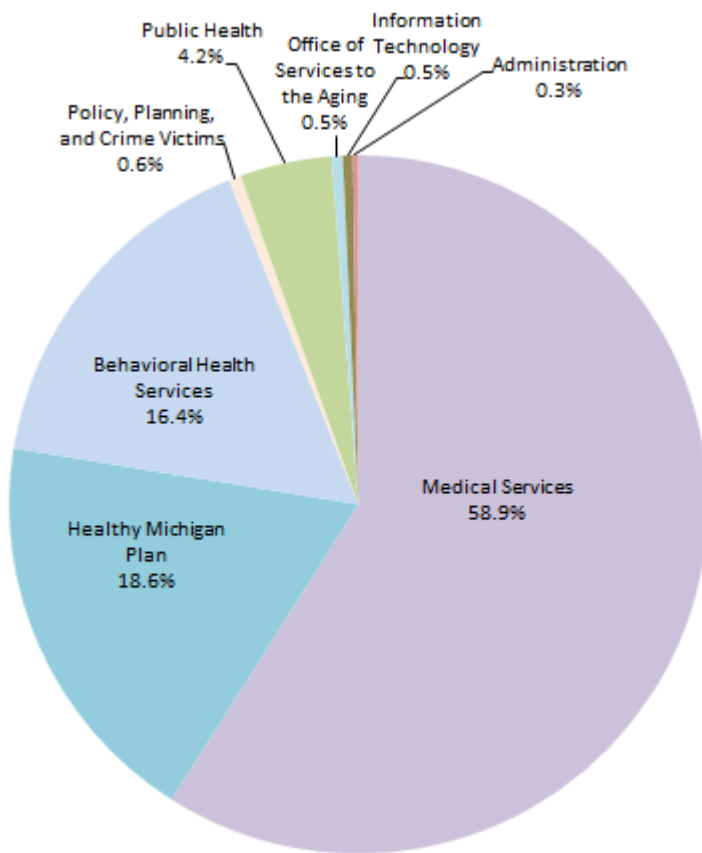
FY 2016 Recommendation	GF/GP	All Funds
	\$ 2,993.3	\$ 18,971.6
FY 16 On-going Investments:	GF/GP	All Funds
Medicaid Adult Dental	\$ 7.9	\$ 23.0
Healthy Kids Dental Phase-In	\$ 7.5	\$ 21.8
Autism Service Expansion	\$ 4.0	\$ 11.6
Psychiatric Residential Treatment Facility	\$ 1.9	\$ 5.0
Fetal Alcohol Syndrome Program	\$ -	\$ 0.9
Aging - Nursing Home Culture and Quality Improvement Program	\$ -	\$ 0.2
FY 16 One-time Investments:	GF/GP	All Funds
Drug Policy Initiatives	\$ 1.5	\$ 1.5
University Autism Programs	\$ 2.5	\$ 2.5
Mental Health and Wellness Commission	\$ 1.5	\$ 1.5
Pay for Success Projects	\$ 1.5	\$ 1.5

MDCH 2016 Budget Recommendation

(in millions)

Reductions	GF/GP	All Funds
Enhance Federal Revenue with State Psychiatric Hospital DSH new policy implementation	\$ (15.8)	\$ 24.1
Graduate Medical Education funding change	\$ (63.5)	\$ -
Rural and Sole Community Hospital funding change	\$ (13.6)	\$ -
Eliminate Medicaid OB/GYN Hospital lump sum payments	\$ (3.8)	\$ (11.0)
Increased pharmacy rebates and HMO contract care coordination savings	\$ (22.1)	\$ (64.1)
HMO Hospital Capital payment policy change	\$ (12.0)	\$ (34.8)
HMO laboratory reimbursement rate change	\$ (10.9)	\$ (31.8)
Eliminate Injury Control Intervention Project funding	\$ (1.4)	\$ (1.4)
Eliminate Real Alternatives funding	\$ (0.8)	\$ (0.8)
Eliminate Graduate Medical Education MiDocs Consortium funding	\$ (0.5)	\$ (0.5)
Shift Eastern Michigan University Autism funding to one-time	\$ (0.5)	\$ (0.5)
Eliminate Alzheimer's pilot program funding	\$ (0.2)	\$ (0.2)
Other Adjustments:	GF/GP	All Funds
Actuarial Soundness	\$ 38.0	\$ 170.0
Continue Primary Care Rate Increase	\$ 8.3	\$ 24.2
Community Mental Health Services	\$ 20.0	\$ 20.0
Health Insurance Claims Tax Revenue	\$ (186.6)	\$ -

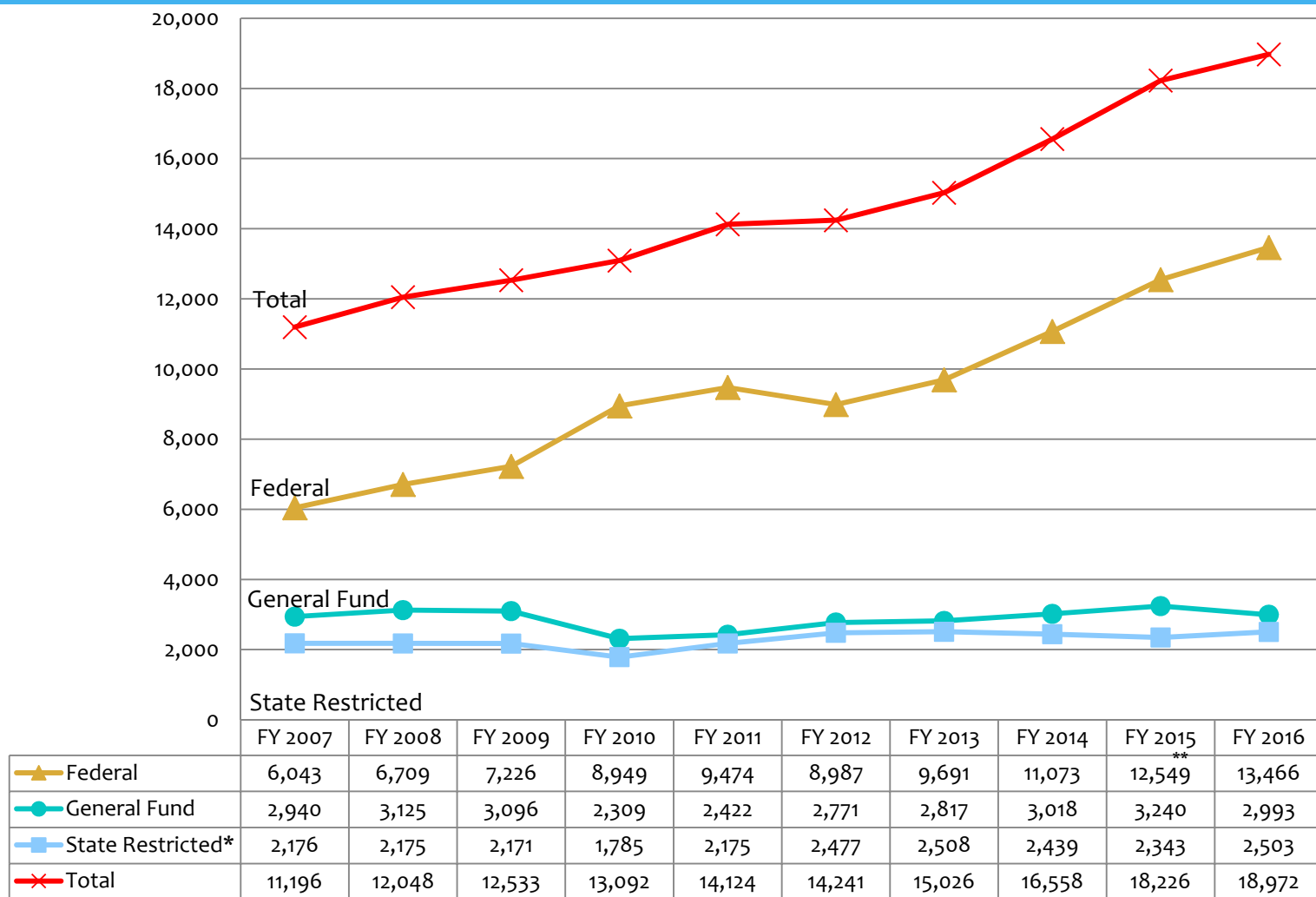
Total FY 2016 Budget Recommendation



	TOTAL	GF/GP
Medical Services	\$11,190.0	\$1,550.5
Healthy Michigan Plan	\$3,526.3	\$0.0
Behavioral Health Services	\$3,108.0	\$1,188.5
Public Health	\$804.0	\$159.4
Policy, Planning, and Crime Victims Commission	\$108.7	\$8.1
Office of Services to the Aging	\$99.7	\$36.1
Information Technology	\$87.1	\$19.7
Administration	\$47.8	\$30.8
FY 2016 TOTAL	\$18,971.6	\$2,993.1

Figures shown in millions

Revenue Sources (in millions)



Revenue Adjustments

Health Insurance Claims Assessment (HICA)

- **Assessment on paid health claims**
- **Paid by health insurance carriers, third-party administrators, and self-insured entities**
- **Structurally fixes a historic revenue shortfall in the assessment**
- **Amend Public Act 162 of 2014**
 - Change rate to 1.3%; provides an additional \$169.3 million to generate a total of \$400 million
 - Eliminate cap, raises an additional \$17.3 million
 - HICA revenue supports Medicaid program

FY16 Initiatives

Provide Support to Youth and Families

Psychiatric Residential Treatment Facility

- Fill gap in care continuum for high-need youth
- Provide transition into supportive community-based services
- 2016 Investment = \$5M Gross / \$1.9M GF

FY16 Initiatives

Provide Support to Youth and Families

Autism Services and Infrastructure

- **Service Expansion**
 - Up to age 21
 - 2016 Investment = \$11.6M Gross / \$4M GF
- **University Autism Programs**
 - Increase number of applied behavioral analysis therapists
 - 2016 One-Time Investment = \$2.5M Gross GF

FY16 Initiatives

Provide Support to Youth and Families

Fetal Alcohol Syndrome Disorders

- Reduce Prevalence and Support Affected Families
- Funded with Retail Liquor License revenue
- 2016 investment = \$ 0.9M Gross / \$0 GF

FY16 Initiatives

Provide Support to Youth and Families

Drug Policy Initiatives

- Reduce prescription drug abuse
- Support those seeking recovery
- Key to ensuring healthy productive futures for youth
- One in eleven adults had a substance use disorder last year¹
- 4,772 Michigan residents died due to unintentional or undetermined intent overdose²
- FY15 Investment = \$1.5M Gross/GF

FY16 Initiatives

Integrate Health and Wellness

Healthy Kids Dental Expansion

- Continue phase in plan for statewide coverage
- Expand into Kent, Oakland, and Wayne Counties
- Cover children under age 9
- \$21.8M Gross/\$7.5M GF investment to cover an additional 210,000 children

FY16 Initiatives

Integrate Health and Wellness

Medicaid Adult Dental Services

- Improve access
- Reduce more costly and inadequate care
- Improve health
- FY2016 investment = \$23M Gross/\$7.9M GF

The Michigan Department of Health and Human Services

- **The River of Opportunity**
- **New way to structure government that puts people first**
- **Efficient, effective, and accountable government that collaborates on a scale never seen to provide good service**
- **Builds on the Pathways to Potential Program, placing caseworkers in schools so they can focus on the whole person/family**
- **Executive Order issued last week: Creates Michigan Department of Health and Human Services (MDHHS)**

MDHHS Principles

- **Treat each person as a whole person with respect**
- **Deliver services in a smarter way with less fragmentation**
- **Support dignity in all stages of life**
- **Improve program outcomes through integration and coordination**
- **Interrupt generational poverty and support families and individuals on their road to self-sufficiency**
- **Ensure the safety, well-being and permanency of the children in our care and the safety of the elderly and adults in our care**
- **Improve the health of Michiganders in a cost effective manner**
- **Self-determination and that customers will have a voice in how their own services are provided.**

Executive Order 2015-4

Department of Health and Human Services

<i>Fiscal Year 2015 Authorized Funding</i>	
<i>(in millions)</i>	
GF/GP	\$ 4,235.2
Federal	\$ 17,109.0
Other Funds:	
Private	\$ 147.3
Local	\$ 260.5
State Restricted	\$ 2,187.6
Total DHHS	\$ 23,939.6
Total FTEs	15,870.00

MDCH Contact Info and Useful Links

Legislative Liaison: Karla Ruest

Phone: (517) 373-1629

Website: <http://www.michigan.gov/mdch>

Facebook: <http://www.facebook.com/michigandch>

Twitter: @MIHealth, <https://twitter.com/mihealth>

Useful Links:

Executive Budget: <http://www.michigan.gov/mibudget>

MI Healthier Tomorrow: www.michigan.gov/mihealthiertomorrow

Healthy Michigan Plan: www.michigan.gov/healthymichiganplan

MIChild: www.michigan.gov/michild