



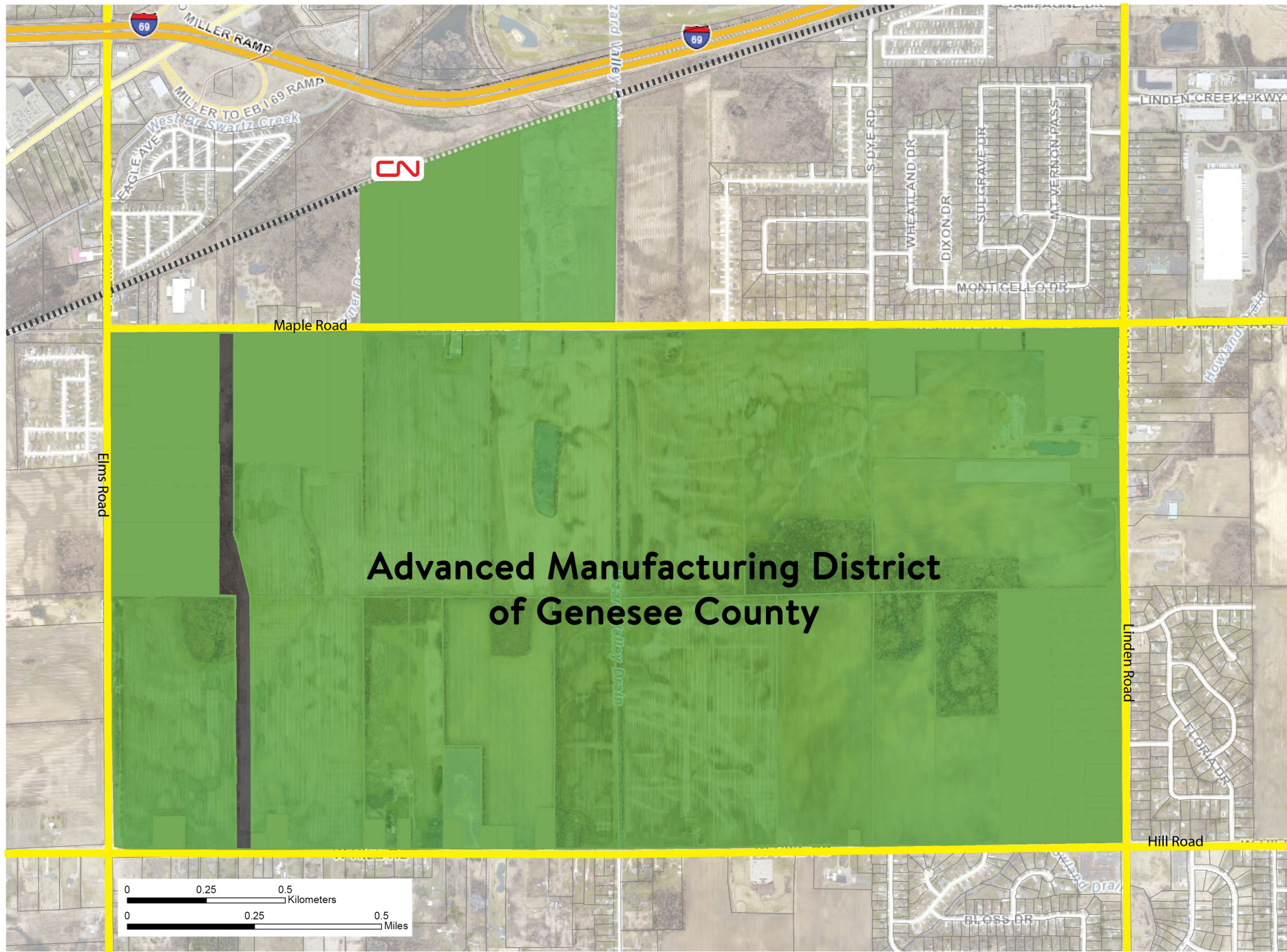
[DevelopFlintandGenesee.org](http://DevelopFlintandGenesee.org)

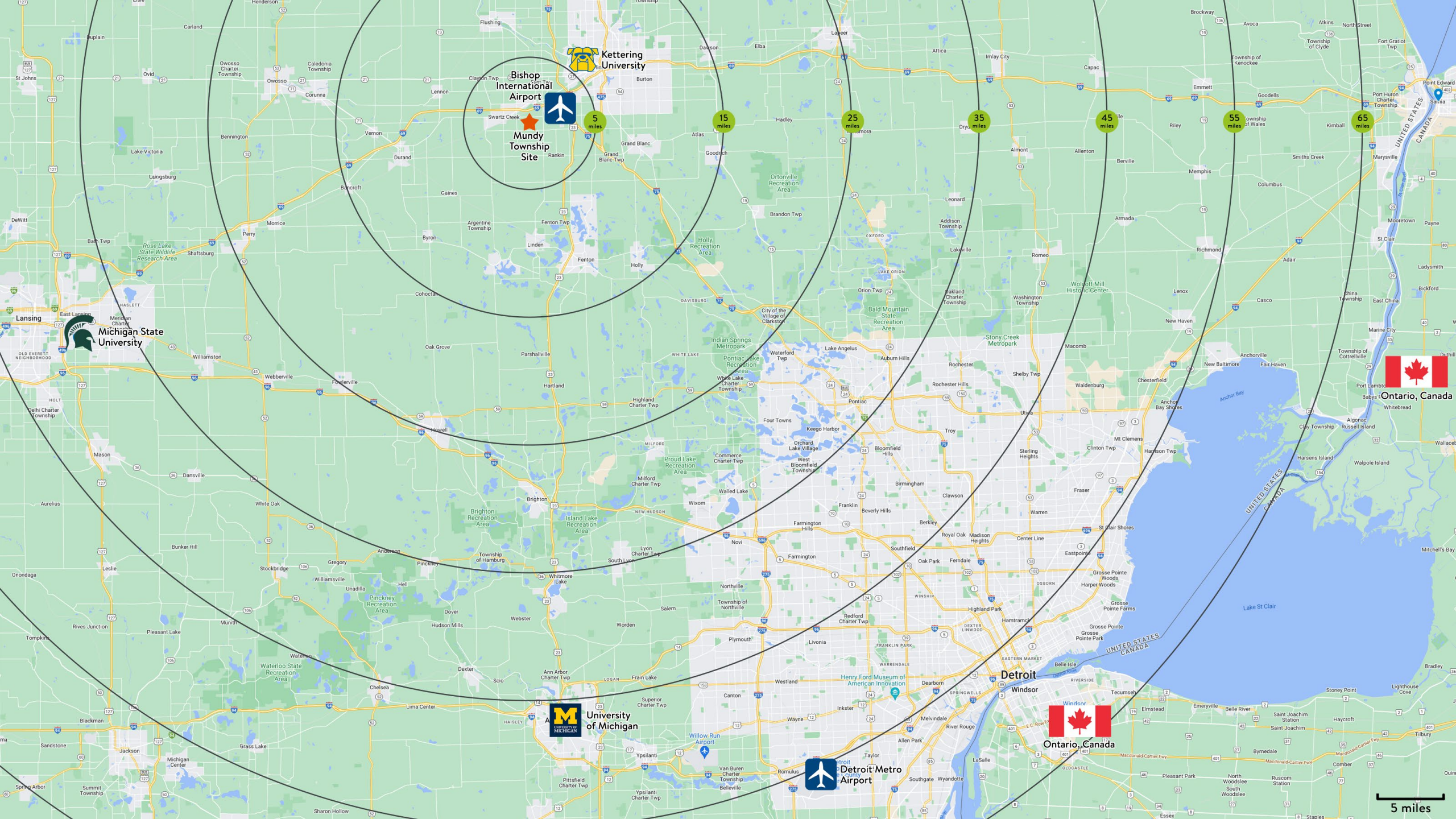
# Flint & Genesee County is poised for major growth.

- The Flint & Genesee community is one of makers and doers! We put the world on wheels. As a result, there are a lot of good reasons for companies to invest here.
- The **Advanced Manufacturing District of Genesee County** is Michigan's premier 1,300+ acre site located in the heart of Genesee County in Mundy Charter Township.
- This site puts Michigan in the game to attract a large-scale advanced manufacturer that will:
  - ✓ Create thousands of new jobs
  - ✓ Pump millions of dollars into our local economy
  - ✓ Provide more opportunities for young people



1388 acres





Kettering University

Bishop International Airport



Mundy Township Site

5 miles

15 miles

25 miles

35 miles

45 miles

55 miles

65 miles



Michigan State University



University of Michigan



Detroit Metro Airport



Ontario, Canada

5 miles

# Reasons for companies to invest:

- **Established zoning enabling advanced manufacturing uses on day one**
- **Robust infrastructure:**
  - Three freeways: I-69, I-75, and US 23
  - 7 interstate exits within 5 miles
  - Adjacent to CN rail line
  - Around the corner from Bishop International Airport
  - Strong access to gas & electricity
  - Unmatched water & sewer capabilities
- **Access to talented and diverse workforce:**
  - Unparalleled talent pool of over 2 million people from Saginaw to Lansing to Detroit with manufacturing and innovation in the DNA
  - Access to some of the best Kettering, UM-Flint, and Mott Community College in town and three R1 Universities within a one-hour drive.
- **Community leadership adept at working with industry and anxious to get to work**



# A Look at Some of Our Supporters



# The Advanced Manufacturing District: A WIN for local community

- ✓ Increased tax revenues
- ✓ Additional community investment
- ✓ More revenue for small business
- ✓ More people moving to Michigan and Genesee County
- ✓ Partnerships with CTE programs
- ✓ Job opportunities for graduates
- ✓ Investment in local transportation

# ADVANCED MANUFACTURING DISTRICT OF GENESEE COUNTY

## SOAR PERFORMANCE-BASED GRANTS

- \$250M reimbursement-based site readiness grant with performance milestones including:
  - Copies of all purchase agreements and land option agreements to be provided to and reviewed by MEDC prior to executing within the first Milestone
  - With the exception of Milestone 1, disbursements made only after at least 70% of grant funds disbursed under previous milestone expended or encumbered
  - Clawback provisions included in terms
- Development within the AMD will be subject to the overlay district design standards set forth in the Mundy Charter Township Zoning Ordinance.
  - Site already zoned for heavy industrial use

## KEY IMPACTS

- Potential to drive a 120% increase in population growth for the region over a 25 years
- Continues to accelerate a transformation in the region that has attracted \$1B+ in manufacturing investment in recent years
- Fast tracking site readiness on one of the last remaining 1,000+ acre sites in Great Lakes Region
- Positions Michigan to secure significant federal investments from programs like CHIPS Act with finite time and limited dollars left to award
- Residents in the region support developing a major manufacturing project in Mundy Charter Township by a 72-22 margin



**THANK YOU**

