



APAM Introduction

04/22/2025

Michigan House Transportation, Mobility and Infrastructure Committee

Introduction

- Asphalt mixtures provide an economical, durable and smooth solution to Michigan's transportation needs
- Asphalt mixtures have many applications and are extremely sustainable
- Each year over 15 Million tons of asphalt mixtures are produced and placed in the state of Michigan.





Who We Are

The **Asphalt Pavement Association of Michigan (APAM)** is a nonprofit trade association representing the asphalt paving industry in Michigan since 1950 [75 years!]

Representing:

- Asphalt Producers & Pavers
- Suppliers (Liquid, Aggregate, Specialty)
- Subcontractors
- Equipment & Product Vendors
- Consulting Engineers
- Transportation Companies
- Technology Groups

Who We Are

- **Mission:** To advance and promote Michigan's use of asphalt pavements through unmatched quality, integrity and innovation
- **Core Values:** Integrity; Innovation; Collaboration; Excellence
- **Pillars:**

Advocate

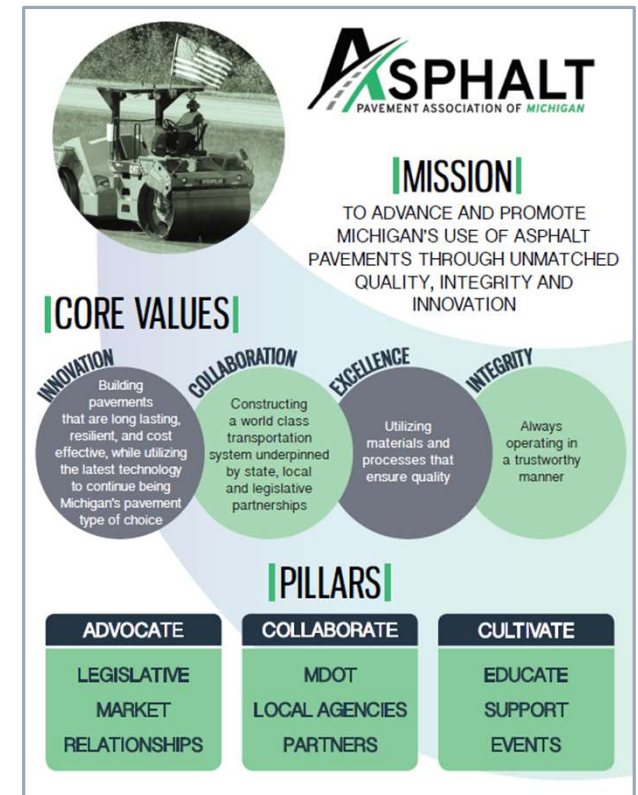
Legislative
Market
Relationships

Collaborate

MDOT
Local Agencies
Partners

Cultivate

Educate
Support
Events



Producer Members



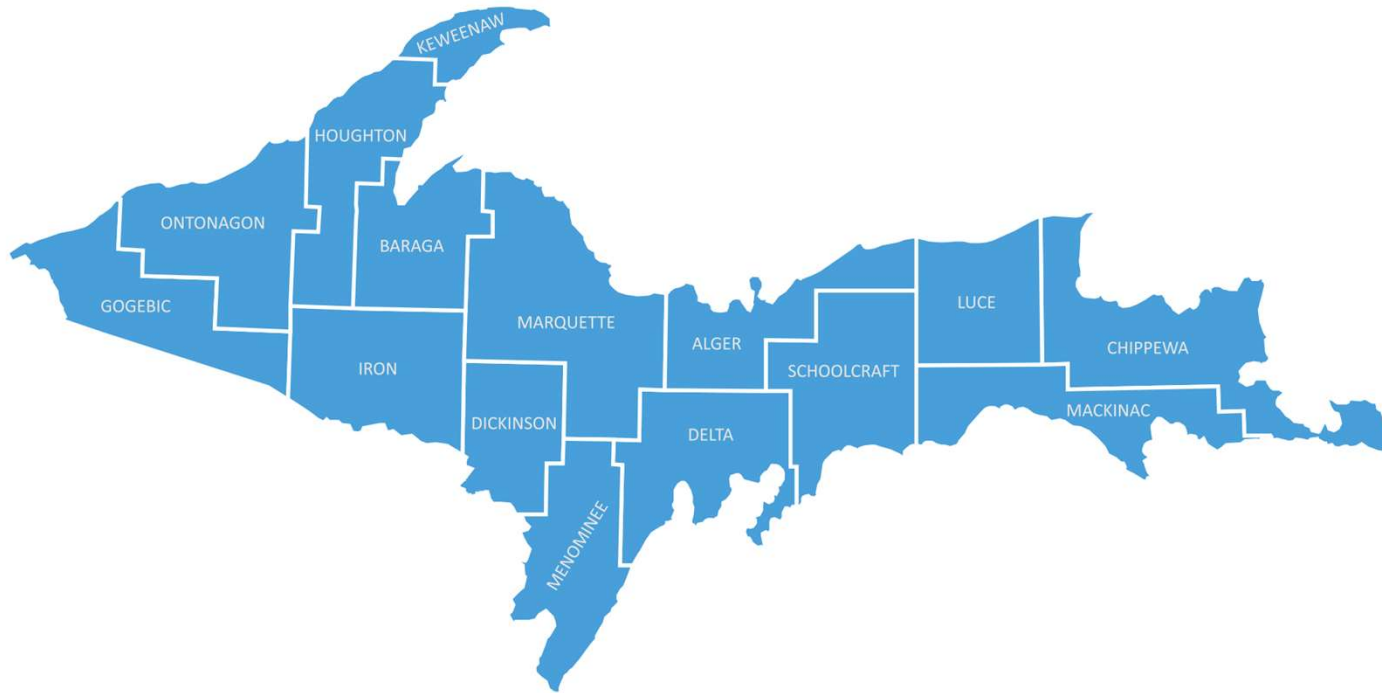
when smoothness matters!

Associate & Paver Member Companies



when smoothness matters!

Upper Peninsula Contractors



Superior Region

Bacco Construction Company
Mathy Construction Company
Elmer's
Payne & Dolan
Rieth-Riley Construction

Lower Peninsula Contractors

North Region

Ace-Saginaw Paving
Bacco Construction Company
Bolen Asphalt Paving
Central Asphalt
Elmer's
Payne & Dolan
Rieth-Riley Construction

Grand Region

Asphalt Paving
Central Asphalt
Lakeland Asphalt
Michigan Paving & Materials
Rieth-Riley Construction
Superior Asphalt

Southwest Region

Lakeland Asphalt
Michigan Paving & Materials
Rieth-Riley Construction

Bay Region

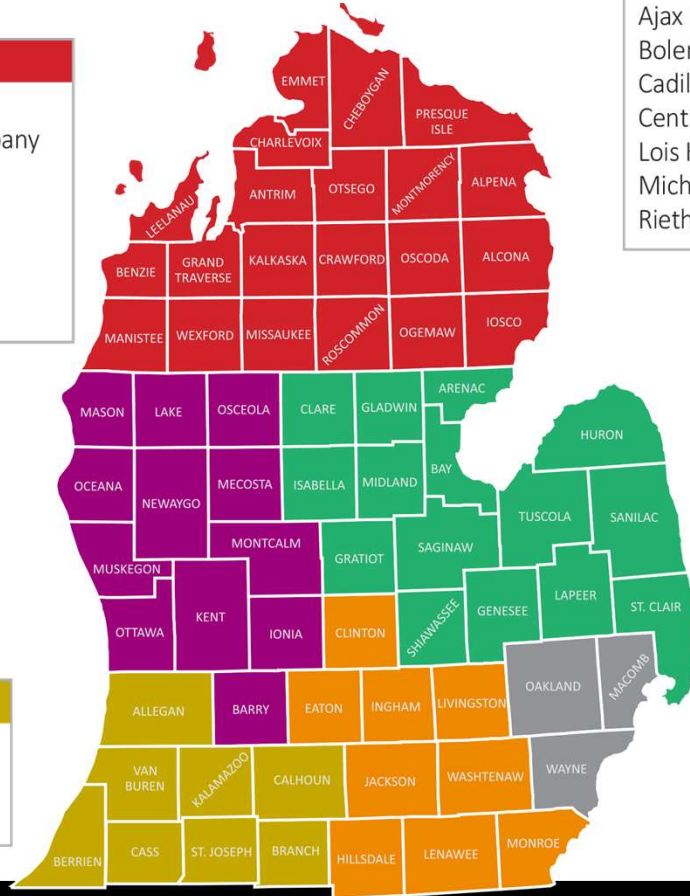
Ace-Saginaw Paving
Ajax Paving Industries
Bolen Asphalt Paving
Cadillac Asphalt
Central Asphalt
Lois Kay Contracting
Michigan Paving & Materials
Rieth-Riley Construction

University Region

Ace-Saginaw Paving
Ajax Paving Industries
American Asphalt
Cadillac Asphalt
Central Asphalt
Gerken Paving
Michigan Paving & Materials
Rieth-Riley Construction

Metro Region

Ace-Saginaw Paving
Ajax Paving Industries
Cadillac Asphalt
Copeland Paving
Rieth-Riley Construction



Our Industry



30,000 Employed



\$5+ Billion Spent



What We Do

- Collaborate with MDOT and other Owners to design, specify and build the most **cost effective, long lasting, smoothest** pavements possible
- Educate & train members, designers and owners on **proper applications, procedures** and **innovations** available in our industry
- Assist designers, policymakers and the general public on how to **select and maintain** asphalt pavements to provide **optimum performance**
- Host events to bring groups together to transfer knowledge and build relationships that help to **develop life-long connections** that **strengthen our industry**

What are Asphalt Mixtures?

- Asphalt mixtures are a blend of:
 - Aggregate [Stone & Sand]
 - Asphalt cement
 - Other [recycle, additives, etc.]
 - Air
- Combined in specific portions to create a composite material that is economical, durable and performs
- Designs are developed by highly-skilled technicians & engineers and verified by the owner



How are Asphalt Mixtures made?

- Asphalt mixtures are produced at an asphalt plant by combining the individual components [stone, sand, recycled asphalt pavement, asphalt cement and more] of the mixture through a controlled process
- Asphalt plants use state of the art technology to meet or exceed all local and federal air requirements and to produce mixtures that meet or exceed owner specifications
- QC/QA is performed on the mixture at multiple points throughout the day to ensure quality

How are Asphalt Mixtures Constructed?

- Asphalt mixtures are transported from the asphalt plant to the jobsite in trucks
- The mixture is placed in the paver which is responsible for controlling the width, thickness and overall smoothness
- Rollers are used to compact [densify] the mixture to reduce the air voids and create a stable, impervious [for most applications] surface that provides a smooth & safe riding surface for decades to come
- QC/QA testing is performed to verify specifications are met



Sustainability

- Asphalt pavements are the **most** recycled product in America!
- Asphalt mixtures are produced with the incorporation of a number of different recycled materials. Such as:
 - Reclaimed Asphalt Pavement (RAP)
 - Reclaimed Asphalt Shingles (RAS)
 - Recycled Tire Rubber (RTR)
 - Steel and Blast Furnace Slag
 - Other (Fly Ash, Fibers, Plastics, etc.)





Sustainability [by the numbers]

- In 2022 over **98 million** tons [**188 billion** pounds], saving pavement owners nearly **5 billion** dollars
- The equivalent of removing **2.7 million** metric tons of CO_{2e} of green house gas from the environment or removing nearly **600,000** passenger vehicles from the road!
- These numbers have **increased** every year since the survey started in 2009

Summary

- To advance and promote Michigan's use of asphalt pavements through unmatched quality, integrity and innovation



30,000 Employed



\$5+ Billion Spent



15,000,000 Tons



Questions

Brett Stanton, PE
Executive Director
bstanton@apa-mi.org



www.apa-mi.org



when smoothness matters!