



MICHIGAN DEPARTMENT OF  
**LABOR & ECONOMIC  
OPPORTUNITY**

6-17-21

# Workforce Challenges

**3 major challenges:**

- 1 Demand for Workers is High**
- 2 Labor Supply is Low**
- 3 Lack of Significant Wage Growth**



## Other Factors

- **Fear of COVID-19**  
Employees will not go back into workplace if employers aren't keeping them safe.
- **Lack of Child Care**  
Growing childcare crisis that threatens Michigan's economic recovery.



# Back to Work

## [Michigan.gov/BackToWork](https://Michigan.gov/BackToWork)

centralizes programs and services aimed at helping employers fill jobs and provide safe, healthy work environments.



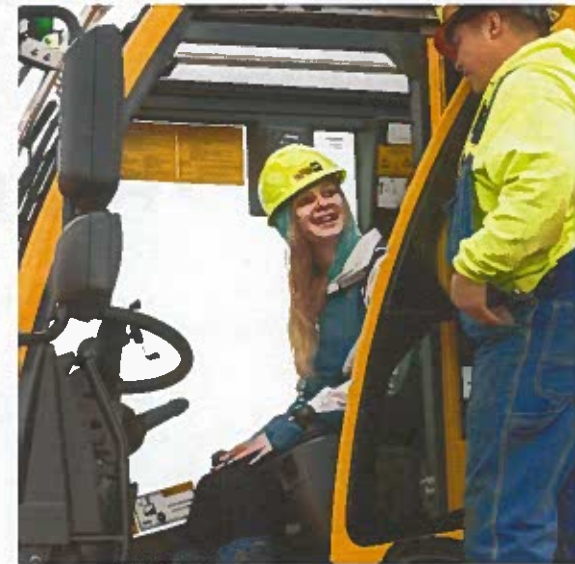
# Addressing Labor Supply

- **Going PRO Talent Fund**

Critical component in addressing an **expected 47,000 annual openings** for professional trade workers through 2028.

- **Apprenticeship Expansion**

Regional Implementation Consortia  
State Apprenticeship Advisory Board





# Addressing Labor Supply

- **Virtual Job Fairs**

Outreach

Promotion to claimants

- **Pure Michigan Talent Connect**

Remote/Virtual Jobs

Safe Job Designation

- **Employer Engagement Webinar Series**



# Workplace Safety – COVID Mitigation

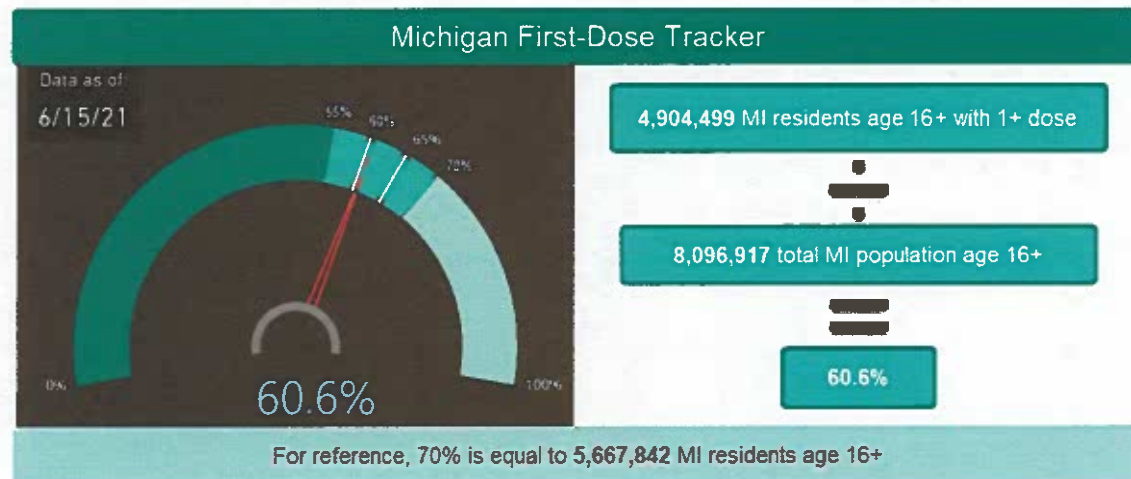
- **MIOSHA Ambassador Program**

Over 4,700 businesses have participated since September 2020.

- **COVID-19 workplace safety grants**

First round of \$6.5M, Second round of \$2M

- **Vaccine Distribution**



# Child Care

- **Appropriating federal dollars**

~\$1.4B in federal childcare dollars.

- **Tri-Share Program**

Makes childcare more affordable through innovative, bipartisan cost-sharing program that divides cost equally between employees, their employer and the State of Michigan.





## Other Actions - UIA

- **Work Search Requirement**

Restarted May 30<sup>th</sup>, 2021

- **Michigan's Back to Work Incentive - Work Share**

Allows employers to bring back or keep employees working with reduced hours.



Questions?

[Michigan.gov/LEO](https://michigan.gov/LEO)



MICHIGAN DEPARTMENT OF  
**LABOR & ECONOMIC  
OPPORTUNITY**