



2021 APAM Introduction

03/23/2021

Michigan House Transportation Committee

Introduction

- Asphalt provides an economical, durable and smooth solution to Michigan's transportation needs
- Asphalt is the most recycled product in the world!
- Each year over 15 Million tons of asphalt is produced and placed in the state of Michigan. That equals over 25,000 lane miles or roughly the circumference of Earth!



Who We Are

The **Asphalt Pavement Association of Michigan (APAM)** is a nonprofit trade association representing the asphalt paving industry in Michigan since 1950.

Representing:

- Asphalt Producers & Pavers
- Suppliers (Liquid, Aggregate, Specialty)
- Subcontractors
- Equipment & Product Vendors
- Consulting Engineers
- Transportation Companies
- Technology Groups

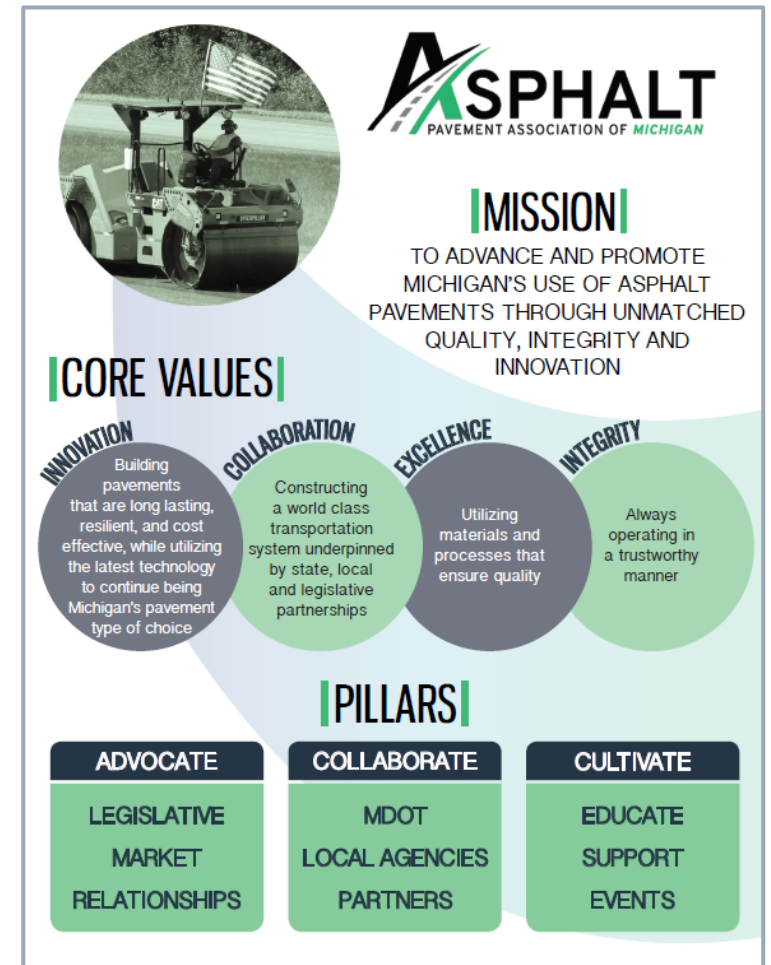
Who We Are

- **Mission:** To advance and promote Michigan's use of asphalt pavements through unmatched quality, integrity and innovation
- **Core Values:** Innovation; Collaboration; Excellence; Integrity
- **Pillars:**

Advocate
Legislative
Market
Relationships

Collaborate
MDOT
Local Agencies
Partners

Cultivate
Educate
Support
Events



Producer Members



Associate & Paver Member Companies



when smoothness matters!

Our Industry



30,000 Employed



\$50 Billion Spent



What We Do

- Collaborate with MDOT and other Owners to design, specify and build the most cost effective, long lasting, smoothest pavements possible
- Educate & train members, designers and owners on proper applications, procedures and innovations available in our industry
- Assist designers, policymakers and the general public on how to select and maintain asphalt pavements to provide optimum performance
- Host events to bring groups together to transfer knowledge and build relationships that help produce economical and durable pavements

Project Examples

- US-2 APB
 - A long-awaited reconstruction of the 4-lane between Rapid River and Gladstone



Project Examples

- US-131
 - Rebuilt in 2017 as part of MDOT's long life pavement demonstration



Project Examples

- I-69
 - A large multiple year reconstruction project currently underway



Summary

- To advance and promote Michigan's use of asphalt pavements through unmatched quality, integrity and innovation



30,000 Employed



\$50 Billion Spent



15,000,000 Tons

Questions

www.apa-mi.org

