



2023 APAM Introduction

10/03/2023

Michigan House Transportation, Mobility and Infrastructure Committee

Introduction

- Asphalt mixtures provide an economical, durable and smooth solution to Michigan's transportation needs
- Asphalt mixtures have many applications and are extremely sustainable
- Each year over 15 Million tons of asphalt mixtures are produced and placed in the state of Michigan. That equals over 25,000 lane miles or roughly the circumference of Earth!



Who We Are

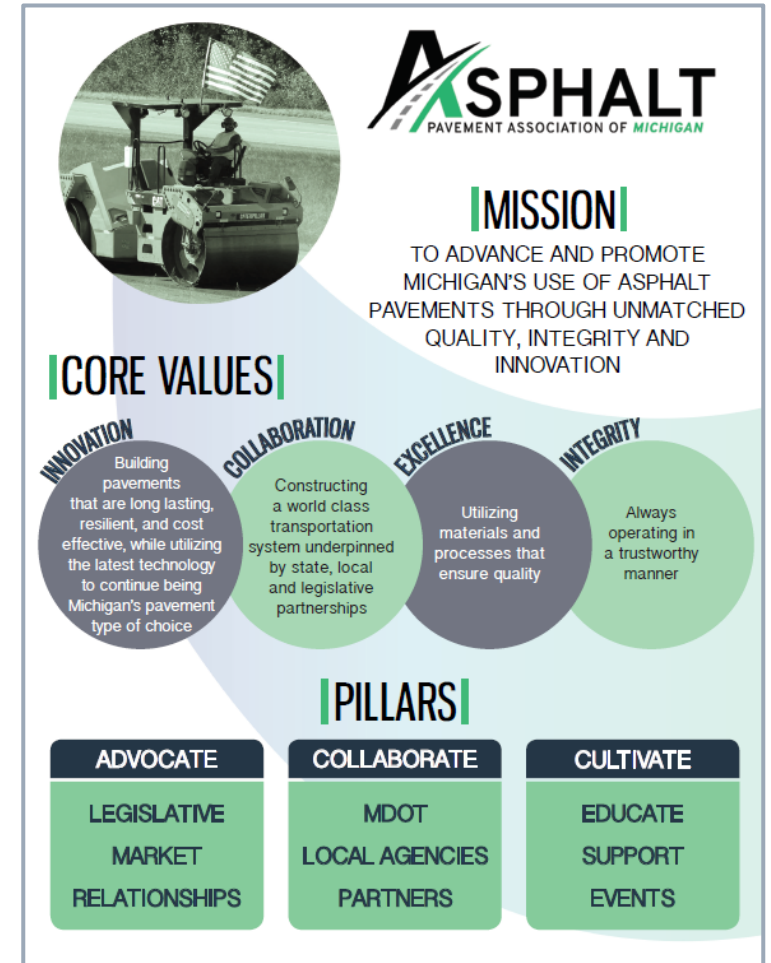
The **Asphalt Pavement Association of Michigan (APAM)** is a nonprofit trade association representing the asphalt paving industry in Michigan since 1950.

Representing:

- Asphalt Producers & Pavers
- Suppliers (Liquid, Aggregate, Specialty)
- Subcontractors
- Equipment & Product Vendors
- Consulting Engineers
- Transportation Companies
- Technology Groups

Who We Are

- **Mission:** To advance and promote Michigan's use of asphalt pavements through unmatched quality, integrity and innovation
- **Core Values:** Innovation; Collaboration; Excellence; Integrity
- **Pillars:**



Producer Members



Associate & Paver Member Companies

when smoothness matters!

Our Industry



30,000 Employed



\$5+ Billion Spent



What We Do

- Collaborate with MDOT and other Owners to design, specify and build the most **cost effective, long lasting, smoothest** pavements possible
- Educate & train members, designers and owners on **proper applications, procedures** and **innovations** available in our industry
- Assist designers, policymakers and the general public on how to **select and maintain** asphalt pavements to provide **optimum performance**
- Host events to bring groups together to transfer knowledge and build relationships that help to **develop life-long connections** that **strengthen our industry**

What are Asphalt Mixtures?

- Asphalt mixtures are a blend of:
 - Aggregate [Stone & Sand]
 - Asphalt cement
 - Other [recycle, additives, etc.]
 - Air
- Combined in specific portions to create a composite material that is economical, durable and performs
- Designs are developed by highly-skilled technicians & engineers and verified by the owner



How are Asphalt Mixtures made?



- Asphalt mixtures are produced at an asphalt plant by combining the individual components [stone, sand, recycled asphalt pavement, asphalt cement and more] of the mixture through a controlled process
- Asphalt plants use state of the art technology to meet or exceed all local and federal air requirements and to produce mixtures that meet or exceed owner specifications
- QC/QA is performed on the mixture at multiple points throughout the day to ensure quality

How are Asphalt Mixtures Constructed?

- Asphalt mixtures are transported from the asphalt plant to the jobsite in trucks
- The mixture is placed in the paver which is responsible for controlling the width, thickness and overall smoothness
- Rollers are used to compact [densify] the mixture to reduce the air voids and create a stable, impervious [for most applications] surface that provides a smooth & safe riding surface for decades to come
- QC/QA testing is performed to verify specifications are met



Sustainability [by the numbers]

- Asphalt pavements are the **most** recycled product in America!
- In 2021 over **94 million** tons [**188 billion** pounds], saving pavement owners nearly **3 billion** dollars
- The equivalent of removing **2.6 million** metric tons of CO_{2e} of green house gas from the environment or removing over **570,000** passenger vehicles from the road!
- These numbers continue to **increase** each year



Summary

- To advance and promote Michigan's use of asphalt pavements through unmatched quality, integrity and innovation



30,000 Employed



\$5+ Billion Spent



15,000,000 Tons



PAVEMENT ASSOCIATION OF **MICHIGAN**

Questions

Brett Stanton, PE
Executive Director
bstanton@apa-mi.org



Chuck Mills, PE
Director of Engineering
cmills@apa-mi.org

www.apa-mi.org