

## House Transportation Standing Committee Meeting

Paul C. Ajegba, P.E.  
Director

February 19, 2019

"Providing the highest quality  
integrated transportation services  
for economic benefit and improved  
quality of life."



1

# We're Positioned to Serve . . .



[www.michigan.gov/mdot](http://www.michigan.gov/mdot)

2

## We're Here to Help...

<p><b>Lansing Office</b>                  Paul C. Ajegba, P.E., Director                  425 W. Ottawa                  Lansing, MI 48933                  Phone: 517-373-2114</p>	<p><b>North Region Office</b>                  Scott Thayer, Region Engineer                  1088 M-32 East                  Gaylord, MI 49735                  Phone: 989-731-5090</p>
<p><b>Bay Region Office</b>                  Robert Ranck, Region Engineer                  5859 Sherman Road                  Saginaw, MI 48604                  Phone: 989-754-7443</p>	<p><b>Southwest Region Office</b>                  Will Thompson, P.E., Region Engineer                  1501 E. Kilgore Road                  Kalamazoo, MI 49001                  Phone: 269-337-3900</p>
<p><b>Grand Region Office</b>                  Erick Kind, Region Engineer                  1420 Front Avenue, N.W.                  Grand Rapids, MI 49504                  Phone: 616-451-3091</p>	<p><b>Superior Region Office</b>                  Aaron Johnson, Region Engineer                  1818 Third Avenue, North                  Escanaba, MI 49829                  Phone: 906-786-1800</p>
<p><b>Metro Region Office</b>                  Kim Avery, Region Engineer                  18101 W. Nine Mile Road                  Southfield, MI 48075                  Phone: 248-483-5100</p>	<p><b>University Region Office</b>                  Demetrius Parker, Region Engineer                  4701 W. Michigan Avenue                  Jackson, MI 49201                  Phone: 517-750-0401</p>

3

## A Healthy Economy Relies on Good Highways

- 38% of US/Canada trade value flows through Michigan
- \$861.5 billion in freight is moved each year on Michigan's highways, rail, air, and water ports
- Trucking accounts for 65% of all freight tonnage moved in Michigan
- 80% of Michigan tourism is auto-based



4

## All Transportation Supports the Economy

- Operation of bus transit systems contribute an estimated \$900 million to the economy each year
- Aviation contributes more than \$22 billion/year
- Bicycling provides an estimated \$668 million/year in economic benefit



5

## Michigan's Multi-Modal Transportation System



- 122,000 route miles
- 11,700 bridges
- 3,600 miles of rail
- 235 public use airports
- 6 intercity bus routes
- 3 passenger rail routes

6



## Multiple Modes, Varied Oversight

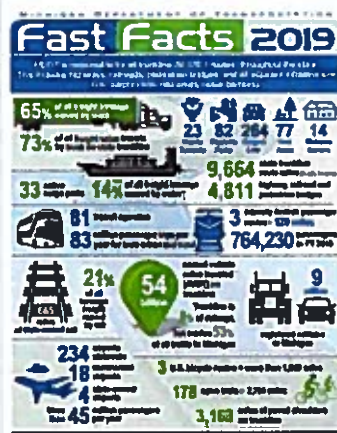


700+ public & private agencies

- 615 road agencies
- 81 transit agencies
- 18 air carrier airports
- 33 active cargo ports

7

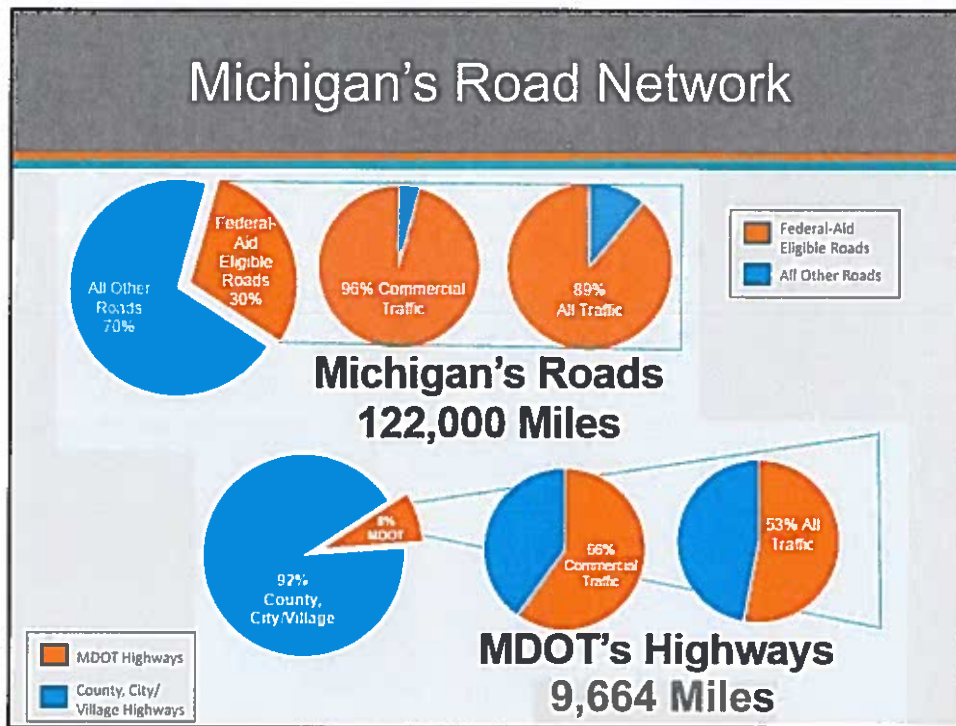
## When to Call MDOT



- 9,664 route miles of "I," "M," and "U.S." routes
- 4,811 bridges on state routes
- 665 miles of rail
- 4 state owned airports
- 82 roadside parks
- 77 rest areas
- 135 miles of passenger rail
- 57.7 miles of bike lanes, 3,168 miles paved shoulders, 3 U.S. Bike Routes

**MDOT's I, US & M routes carry 53% of all traffic & 66% of commercial traffic.**

8



9

## 2019 Performance Excellence Plan

**MDOT**  
Michigan Department of Transportation  
2019 Performance Excellence Plan

**State of Michigan Performance Excellence Framework**

What happens on the job?

Why are we here?

Do better Michigan

Plan Highlights include:

- Organizational Strategy
- Workforce and Succession Planning
- Process Improvement Initiatives
- Major Projects and Program Performance

10

## Saving Money

Over \$675.3 million saved through efficiencies and innovations from 2010-2017

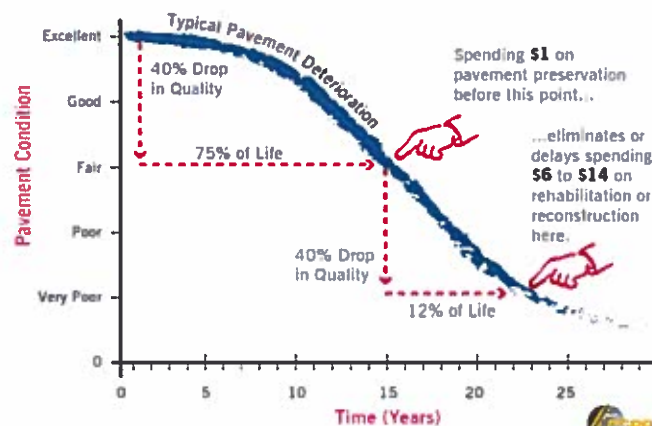
- Asset management
- Energy efficiency
- Safety
- Incentive finance
- Performance measures
- Innovative contracts
- New technologies
- Partnerships



11

## Michigan is a Pioneer in Asset Management

### PAVEMENT PRESERVATION IS COST EFFECTIVE



12



## Leaner & Smarter

### Leveraging Partnerships

- Contractors/Consultants
- University Research
- Local Agencies
- Other State Agencies
- Other States/Provinces



13

## Michigan is a Transportation Leader

### Nationally recognized

- Asset management
- Context-sensitive solutions process
- Performance measurement
- Received 70 national awards since 2011



14

## Michigan is a Transportation Innovator

- Automotive mobility innovation
- Performance warranties
- e-Construction
- Accelerated Bridge Construction
- Carbon Fiber Reinforcement
- Diverging Diamond Interchanges
- Innovative Materials
- MiBridge Bridge Inspection/Management system



15

## Local Collaboration

- Asset Management Data Collection & Reporting
- Context Sensitive Solutions
- Nonmotorized trail network
- Local Complete Streets policies
- MDOT facilitating community needs
- CSS responding to community needs
- National Association of City Transportation Officials (NACTO) guidelines
- Trunkline Main Streets



16



## Where Do We Stand?

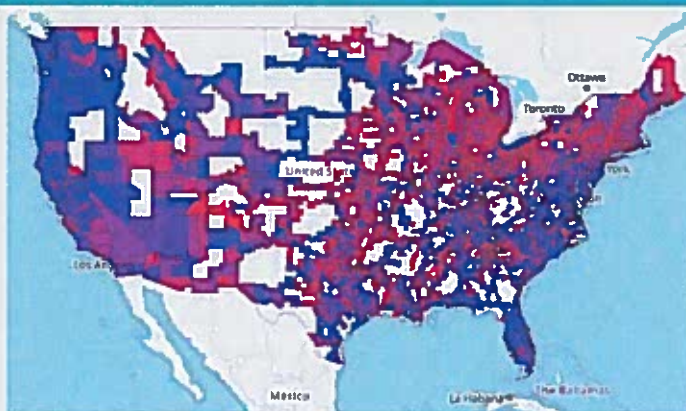
### State Trunkline Condition

Year	% Good/Fair Condition
2010	91%
2011	89%
2012	87%
2013	86%
2014	85%
2015	84%
2016	83%
2017	79%
2018	79%



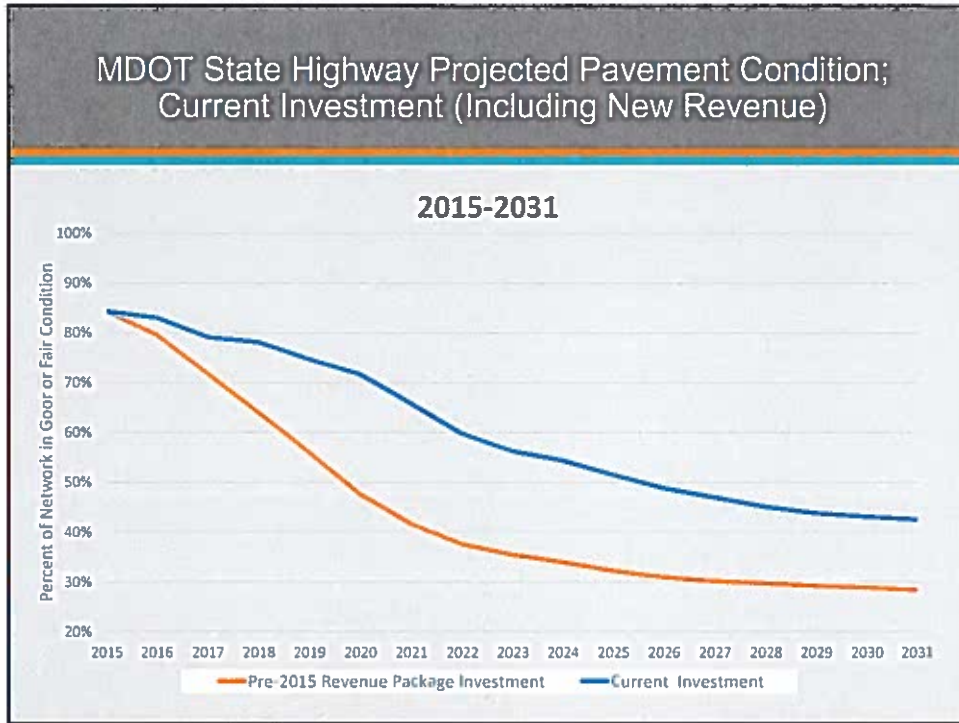
17

## Where Do We Stand?

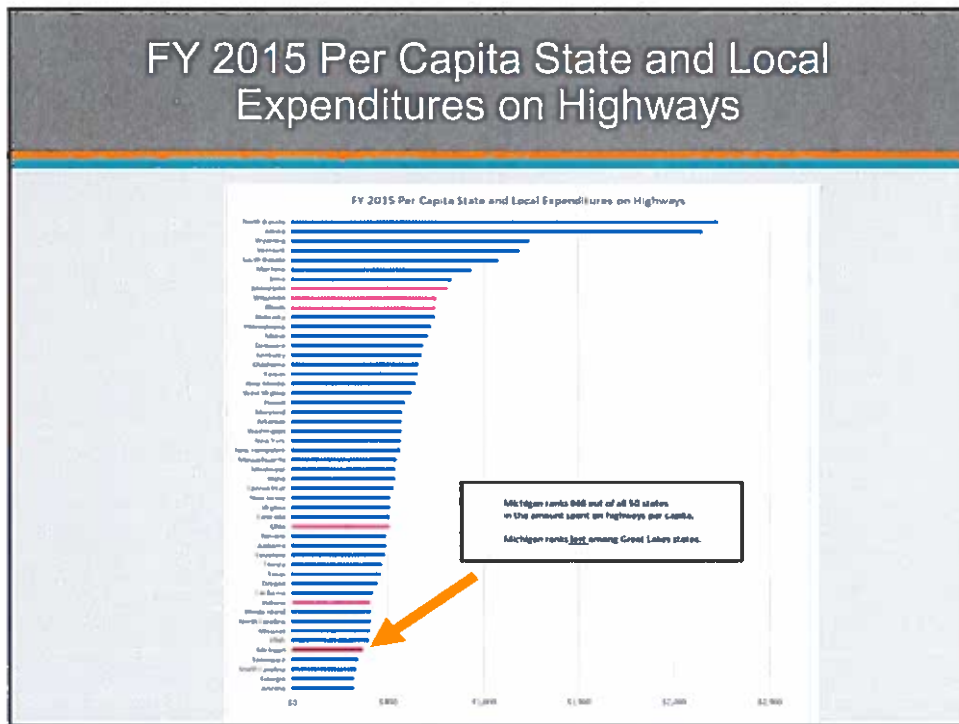


- ▶ Last year, the American Society of Civil Engineers gave Michigan a D+ for the state of our infrastructure.
- ▶ Also last year, a privately-funded study found that Michigan has the worst roads in the nation.

18

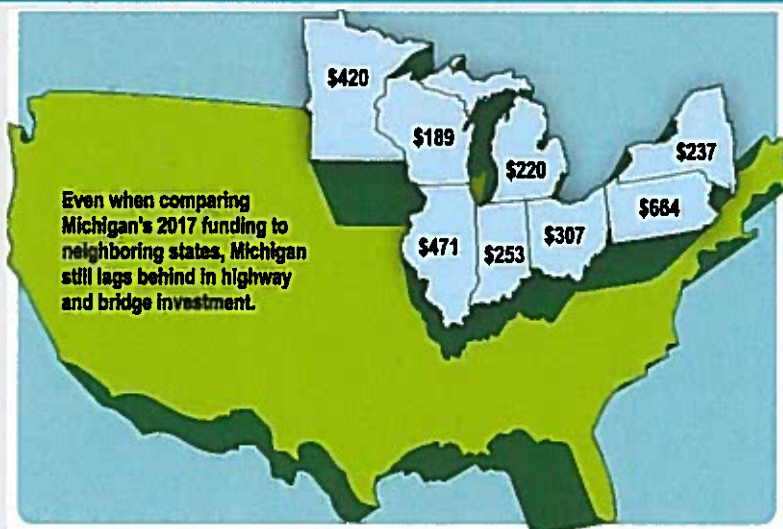


19



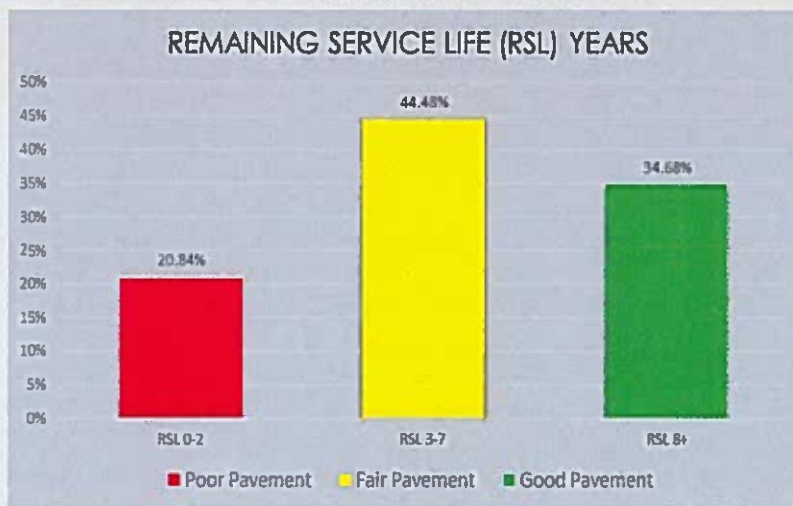
20

## Per Capita State Investment in Roads



21

## Remaining Service Life (RSL) Years



22



## Transportation Funding

### Estimated Transportation Revenue Fiscal 2019

State Road-User Fees	
Vehicle registration fees	\$1,366 M
Gasoline tax	\$1,221 M
Diesel fuel tax	\$243 M
<b>Total of User Fees</b>	<b>\$2,830 M</b>
Income, sales, marijuana tax, other	\$273M
<b>Total State MTF Revenue</b>	<b>\$3,103 M</b>
<b>Federal-Aid for Roads</b>	<b>\$1,133 M</b>

23

## Transportation Funding

### Transportation Fund Distribution Fiscal 2019

State Restricted Funds	
State highways	\$1,083 M
Local roads	\$1,573 M
Public transportation	\$252 M
Federal-Aid for Roads	
State highways (75%)	\$850 M
Local roads (25%)	\$283 M

24

## 2015 Revenue Package



Beginning in January, 2017:

- Fuel taxes rose to 26 cents/gallon
- \$400 million/year in additional fuel-tax revenues
- 20% increase in vehicle fees yielding \$197 million/year

Beginning in Fiscal 2019: Income-tax revenue is distributed to road agencies (60.9% to local agencies & 39.1% to MDOT):

- FY 2019: \$150 M
- FY 2020: \$325 M
- FY 2021 and after: \$600 M

Beginning in 2022, the fuel tax will be indexed to the Consumer Price Index

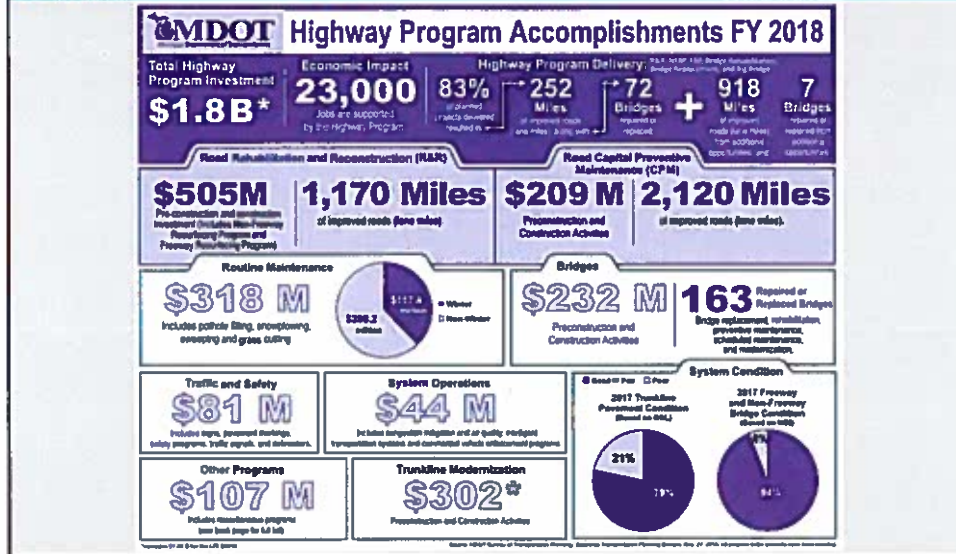
25

## State Revenue Package Non-Monetary Provisions

- MDOT administrative expenses limited to 8% of budget
- Pavement Warranties for projects over \$2 million
- Competitive Bidding: All agencies required to competitively bid projects over \$100,000
- MDOT reported on constructing longer-lived pavements; completed report can be found at:  
[https://www.michigan.gov/documents/mdot/RoadsInnovationTaskForceReport\\_515824\\_7.pdf](https://www.michigan.gov/documents/mdot/RoadsInnovationTaskForceReport_515824_7.pdf)

26

## Highway Program Accomplishments



27

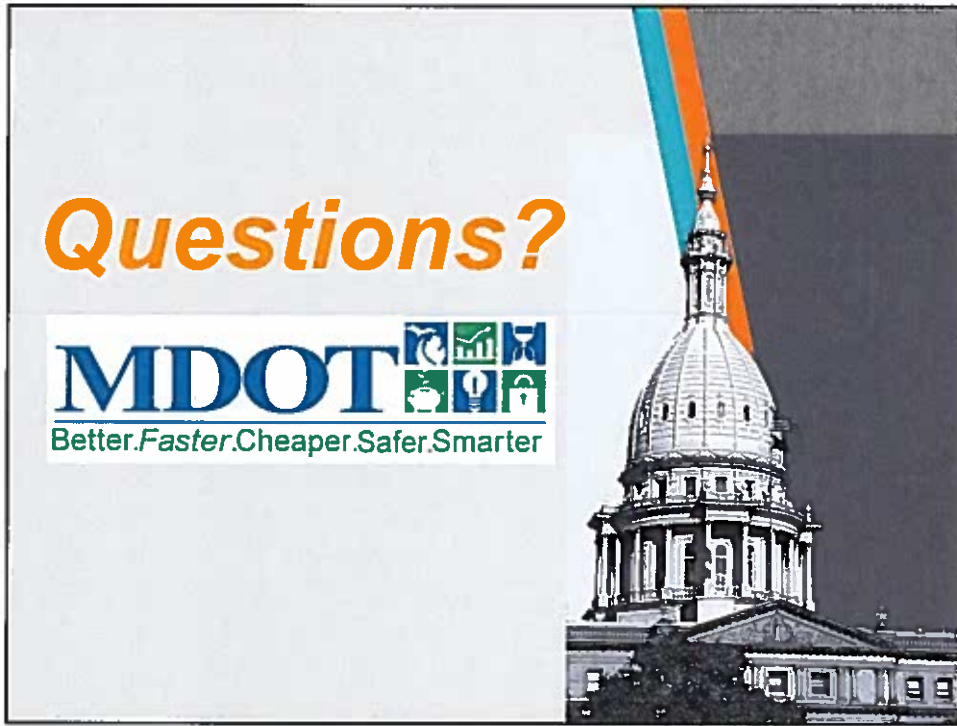
## Other Resources

- [www.michigan.gov/mdot](http://www.michigan.gov/mdot)
- **Facebook:** [www.facebook.com/MichiganDOT](https://www.facebook.com/MichiganDOT)
- **Twitter:** Statewide - [www.twitter.com/MichiganDOT](https://www.twitter.com/MichiganDOT)
- **YouTube:** [www.youtube.com/MichiganDOT](https://www.youtube.com/MichiganDOT)



28





29

