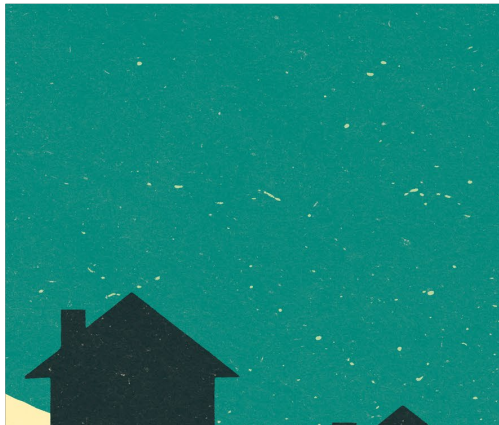


The Michigan Energy Assistance Program

An introductory overview of the Michigan Energy Assistance Ecosystem and the MEAP



Reka Holley Voelker

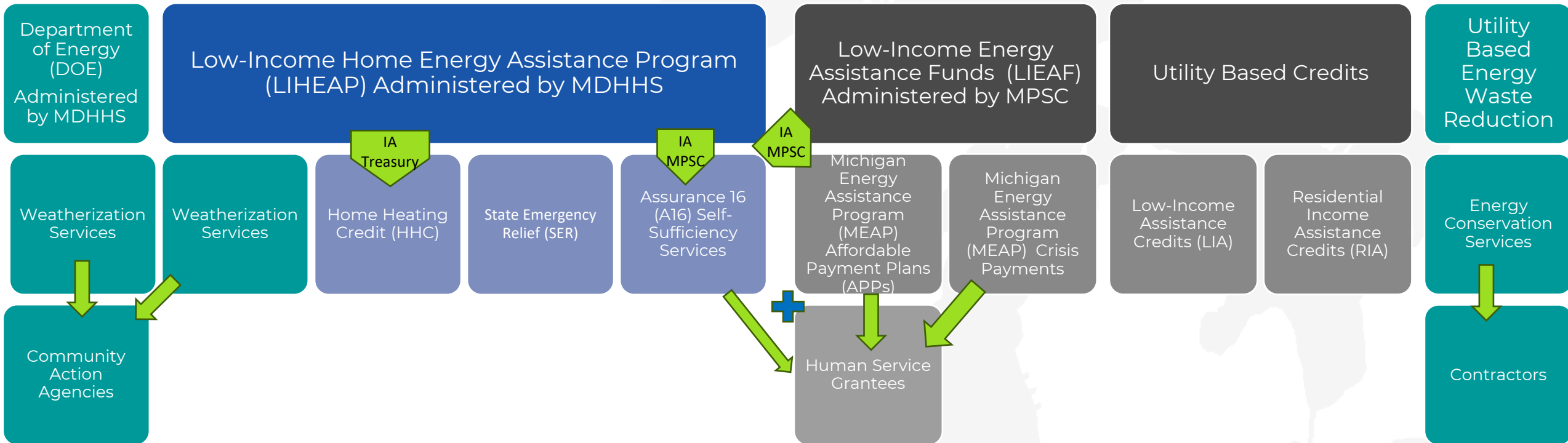
Legislative Liaison

April 17, 2024

The Energy Assistance Ecosystem

Federal Funds

Ratepayer Funds



2024 FPL Table

Household Size	100% FPL	110% FPL	150% FPL	200% FPL	250% FPL
1	\$15,060	\$16,566	\$22,590	\$30,120	\$37,650
2	\$20,440	\$22,484	\$30,660	\$40,880	\$51,100
3	\$25,820	\$28,402	\$38,730	\$51,640	\$64,550
4	\$31,200	\$34,320	\$46,800	\$62,400	\$78,000
5	\$36,580	\$40,238	\$54,870	\$73,160	\$91,450
6	\$41,960	\$46,156	\$62,940	\$83,920	\$104,900
7	\$47,340	\$52,074	\$71,010	\$94,680	\$118,350
8	\$52,720	\$57,992	\$79,080	\$105,440	\$131,800

The Low-Income Energy Assistance Fund

- ❑ Established in 2013 in MCL 460.9t; Provides for the following:
 - Annual “non by passable surcharge” of up to \$1.00/month
 - On each customer meter of participating electric utilities
 - Calculated to collect no more than \$50M
- ❑ Allows electric utilities to opt out of collecting the surcharge BUT electric utilities that opt out cannot shut customers off for nonpayment from November 1 through April 15.
- ❑ Exclusively used to fund the Michigan Energy Assistance Program (MEAP)

Establishing the LIEAF Surcharge

Order #1

- Directs all utilities to indicate whether they are opting in or opting out.
- Utilities that opt in provide the total number of meters within their service territory.

Order #2

- Commission Staff calculates the proposed surcharge by dividing \$50M by the total number of meters multiplied by 12.
- This is the proposed surcharge included in Order #2 and is put out for comment.

Order 3

- Adopts the final surcharge after the comment period.

Michigan Energy Assistance Program (MEAP)

- ❑ Michigan Energy Assistance Program
 - The department shall distribute the funds to eligible low-income households for energy assistance.
 - Energy assistance must include services that will enable participants to become or move toward becoming self-sufficient, including
 - ❑ assisting participants in paying their energy bills on time
 - ❑ assisting participants in budgeting for and contributing to their ability to provide for energy expenses
 - ❑ assisting participants in utilizing energy services to optimize on energy efficiency
- ❑ Program provides 1-time payments as well as ongoing payment support through utility Affordable Payment Plans

Administering the MEAP

- ❑ Administered by the MPSC
 - Annual RFP process to select grantees who will provide assistance and services to customers
 - 9 grantees were selected in 2024
 - ❑ Barry County United Way
 - ❑ Bureau of Community Action and Economic Opportunity
 - ❑ Society of St. Vincent de Paul of the Archdiocese of Detroit
 - ❑ Superior Watershed Partnership
 - ❑ The Heat and Warmth Fund
 - ❑ The Salvation Army
 - ❑ TrueNorth Community Services
 - ❑ United Way for Southeastern Michigan
 - ❑ United Way of South Central Michigan
- ❑ Continuous collaboration between MPSC, MEAP Grantees, and DHHS

Statewide Program



[This Photo](#) by Unknown Author is licensed under [CC BY-SA-NC](#)



[This Photo](#) by Unknown Author is licensed under [CC BY](#)

The Customer Journey: Getting Assistance

- ❑ Tax form: Home Heating Credit heating assistance
- ❑ Past due notice and DHHS State Emergency Relief (SER) crisis application
 - MEAP (goal of self-sufficiency)
 - Additional crisis assistance
 - Affordable Payment Plans
 - LIHEAP self-sufficiency services
- ❑ *LIA/RIA utility credit enrollment
 - Automatic → HHC or SER
 - Self-declaration for LIA/RIA



Challenges within the Ecosystem

- ❑ Orientation of the system toward addressing crisis requires *going into crisis* despite stated goals of encouraging self-sufficiency.
- ❑ Lack of effective coordination between programs creates unnecessary barriers for customers and administrative burden for front-line staff.
 - Cross-over eligibility and inconsistencies in the receipt of benefits
- ❑ Lack of coordination between funding streams creates inefficiencies in the delivery of assistance and may not result in funds helping those who are most in need.
- ❑ Funding.

Thank you!!

