



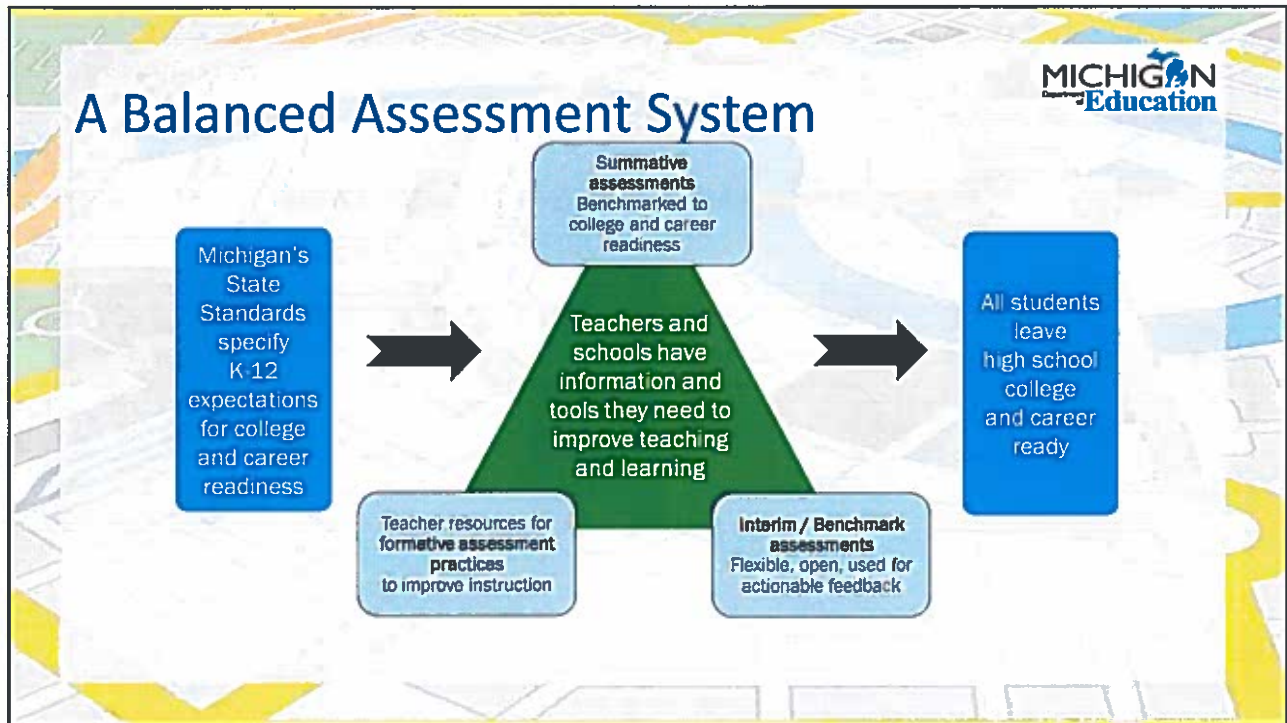
1

The Michigan Department of Education logo is located in the top right corner of the slide.

What is balanced assessment?

- A Comprehensive & Balanced Student Assessment System is a coordinated system of assessments aligned to standards and success criteria for the whole child. The assessments and assessment processes are used to inform instruction, measure progress, specify additional learner needs, guide in depth supports, indicate growth toward competencies, and provide information regarding outcomes.

2




3

What is Formative Assessment?

MICHIGAN Education

- Formative Assessment – is a planned, ongoing **process** used by all students and teachers during learning and teaching to elicit and use evidence of student learning to improve student understanding of intended disciplinary learning outcomes and support students to become self-directed learners. Formative assessment is an instructional process, not a single tool or assessment.


4



What are Interim or Benchmark Assessment?

- Interim/Benchmark Assessments - measure growth toward competencies and the impact of Tier 1 instruction for all learners. They are administered periodically throughout the school year for one or more of the following purposes: predictive (identify learner readiness for success on a later summative assessment); evaluative (to appraise ongoing educational programs) and/or instructional (to supply teachers with individual learner performance data).

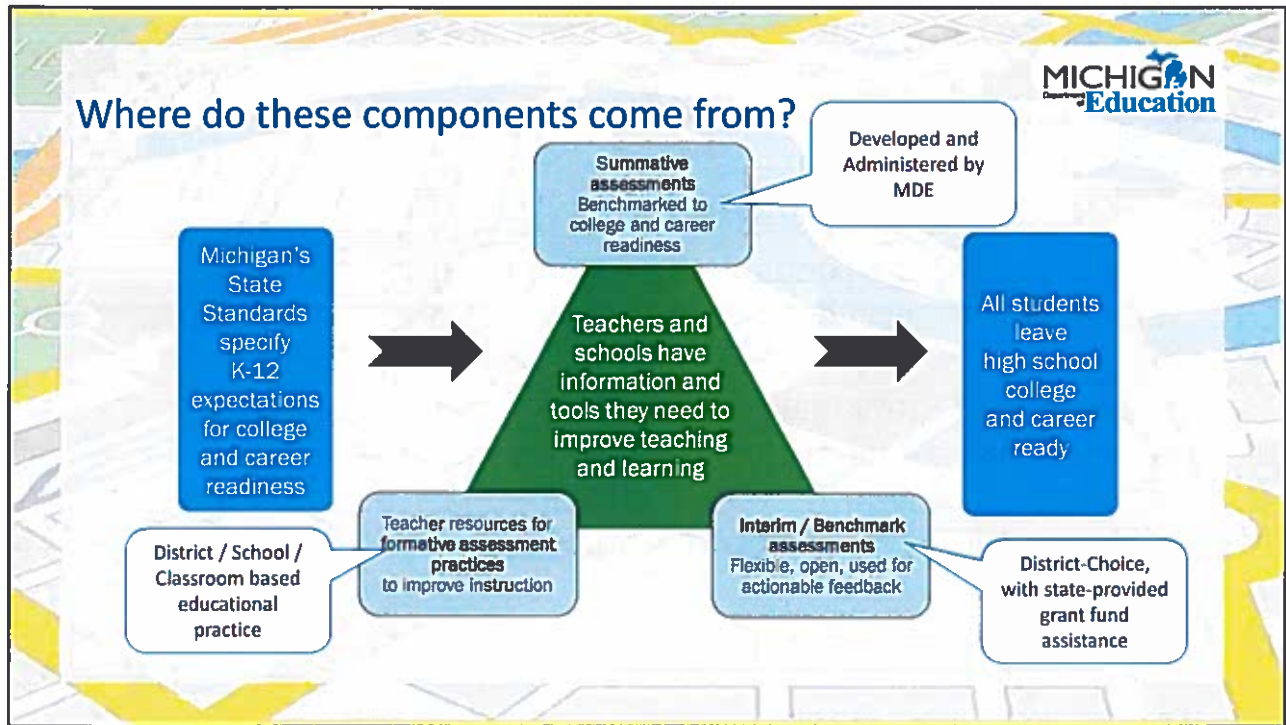
5



What is Summative Assessment?

- Summative Assessments - provide information regarding the level of learner, program or school success at an endpoint in time. Administered at the conclusion of learning to 1) determine the effectiveness of a recently concluded program, 2) infer about a learner's mastery of curricular aims, and/or 3) meet local, state and federal accountability requirements.

6



7


2018 M-STEP Test Administration

- Nearly 99% of schools administered the M-STEP to students online – compared to 80% in 2015.
- Fast results! Preliminary results within 24-48 hours; final results released August 29, prior to the beginning of the school year.

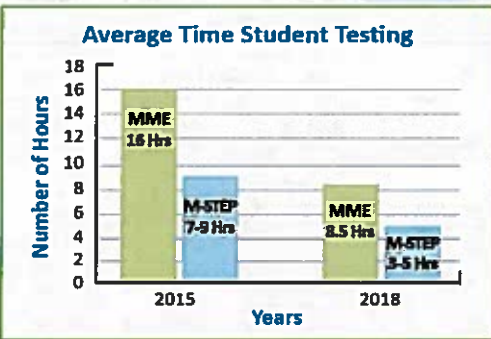
4/15/2019

8

2018 M-STEP Test Administration



- Students are spending more time in the classroom and less time on testing.




Year	MME (Hours)	M-STEP (Hours)
2015	16	7-8
2018	8.5	3-5

4/15/2019

9

Michigan's Assessment System Over Time



Year	What Changed?	Why?
2015	First Year of M-STEP (after 44 years of MEAP)	Transition to a new assessment to measure new standards and use more advanced assessment practices
2016 & 2017	Removed ELA Performance Tasks in Grades 3, 4, 6, and 7 Used the SAT Plus Essay in 11 th grade for ELA and math only (eliminated the M-STEP ELA and Math) Began offering PSAT in 9 th and 10 th grade	Superintendent direction to reduce testing time
2018	Cut testing time in ELA and mathematics in grades 3-8	Legislative requirement to reduce testing time to no more than 3 hours on average for ELA and Math
2019	Transition 8 th grade mathematics and ELA test from the M-STEP to the PSAT 8/9 Optional use of benchmark assessments supported with state investment	* Department assessment vision * Legislative language that requires assessments in grades 8-10 to be aligned to the college entrance portion of the MME.

10

Michigan's Assessment System



State Assessments						
Grade	Test Type	Frequency	Test Name	Subjects	Given	Purpose
K-2	Benchmark	Required	Early Literacy and Mathematics Benchmark Assessment or District-selected benchmark ¹	ELA, Mathematics	Fall, Winter, Spring	Within-year progress; program improvement
3	Summative Benchmark	Required	M-STEP	ELA, Mathematics	Spring	Proficiency; accountability
		Optional	District-selected benchmark assessment ^{1,2}		Multiple	Within-year progress; program improvement
4	Summative Benchmark	Required	M-STEP	ELA, Mathematics	Spring	Proficiency; accountability
		Optional	District-selected benchmark assessment		Multiple	Within-year progress; program improvement
5	Summative Benchmark	Required	M-STEP	ELA, Mathematics Science ³ , Social Studies	Spring	Proficiency; accountability
		Optional	District-selected benchmark assessment		Multiple	Within-year progress; program improvement
6	Summative Benchmark	Required	M-STEP	ELA, Mathematics	Spring	Proficiency; accountability
		Optional	District-selected benchmark assessment		Multiple	Within-year progress; program improvement
7	Summative Benchmark	Required	M-STEP	ELA, Mathematics	Spring	Proficiency; accountability
		Optional	District-selected benchmark assessment		Multiple	Within-year progress; program improvement
8	Summative Benchmark	Required	PSAT 8/9	ELA, Mathematics Science ³ , Social Studies	Spring	Proficiency; accountability; college readiness
		Optional	M-STEP District-selected benchmark assessment		Multiple	Within-year progress; program improvement
9	Summative	Required	PSAT 8/9	ELA, Mathematics	Spring	College Readiness
10	Summative	Required	PSAT 10	ELA, Mathematics	Spring	College Readiness
11 ²	Summative	Required	MME: SAT with Essay	ELA, Mathematics	Spring	College Readiness; accountability
		Required	MME: M-STEP	Science ³ , Social Studies	Spring	Proficiency; accountability
		Required	MME: ACT WorkKeys	Reading, Mathematics	Spring	Career Readiness

11

State Summative Assessments



- M-STEP (Michigan Student Test of Educational Progress)
 - Given to students in grades 3-7 to measure student progress on academic standards in English language arts (ELA), mathematics
 - Given to students in grades 5, 8, and 11 to measure student progress on science (field test) and social studies standards
- PSAT (Pre-SAT by College Board)
 - PSAT 8/9 given to students in grade 8 to measure student progress on academic standards in ELA and mathematics *and* prepare for SAT taken in high school
 - PSAT 8/9 for students in grade 9 (no statewide reporting or accountability)
 - PSAT 10 for students in grade 10 (no statewide reporting or accountability)

12

State Summative Assessments (cont'd)



- MME (Michigan Merit Exam):
 - Given to students grade 11
 - Consists of three required components:
 - SAT with Essay to measure student progress on ELA and mathematics standards and college readiness
 - M-STEP to measure student progress on science and social studies standards
 - ACT WorkKeys to measure work place readiness

13

Reimbursement for Vendor-Provided Benchmark Assessments



- Districts may select vendor-provided assessment options that meets defined criteria and apply for grant funding to supplement the cost for their LEA.
- Covered Grades K-8, for Math and ELA.
- 651 Districts Applied, Covering 924,896 Students
- 17 Different Tools Used
- Average per student amount provided to districts was \$9.94.

14



Questions?

- Website: www.michigan.gov/oeaa
- Email: mde-oeaa@michigan.gov
- Phone: 877-560-8378