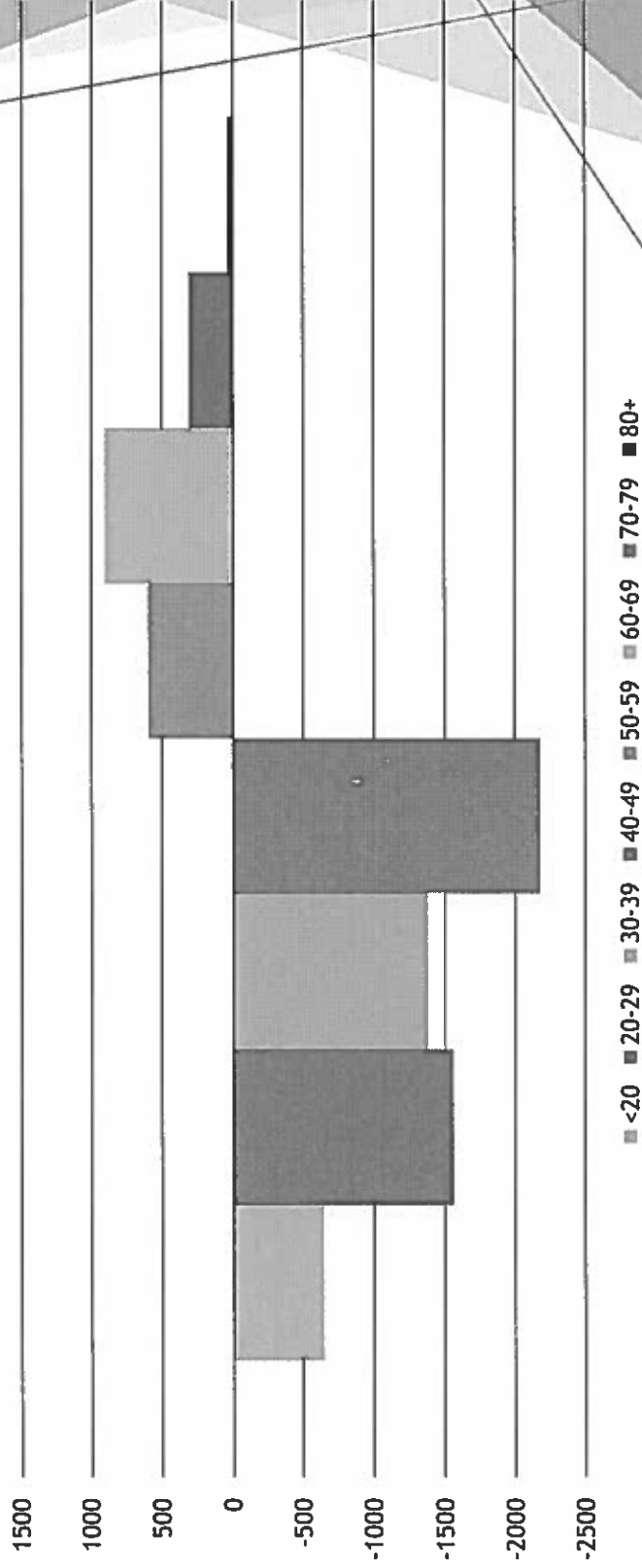


MDOC Older/Frail Prisoner Population Update

December 6, 2017

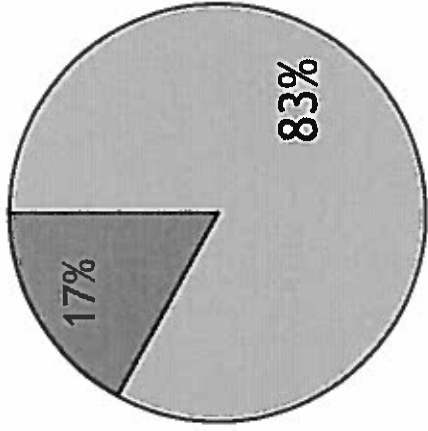
Prisoner Age Demographics

Prison Population Change by Age 2009 vs. 2016

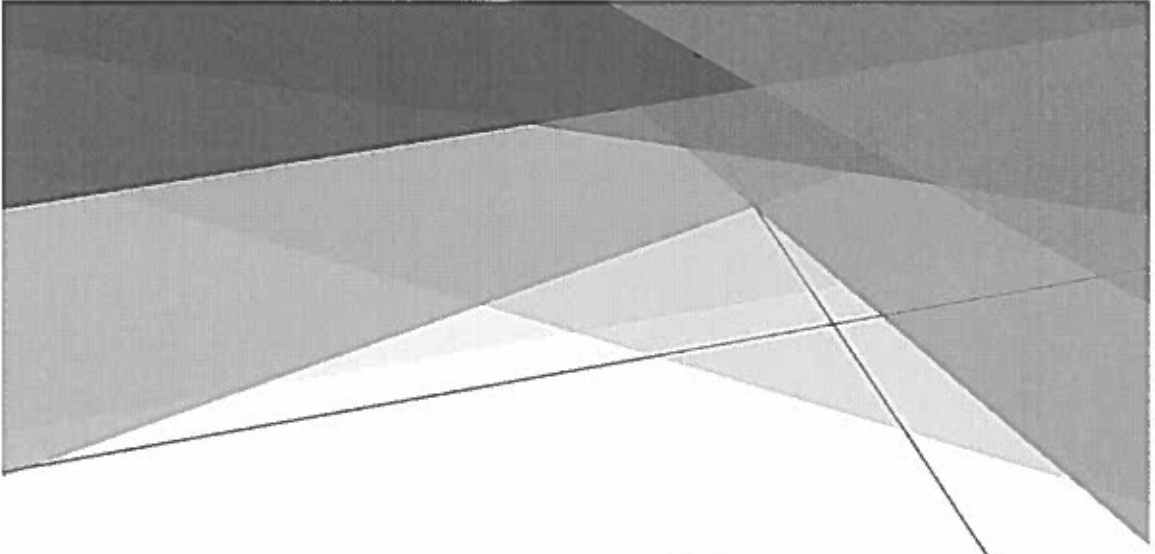
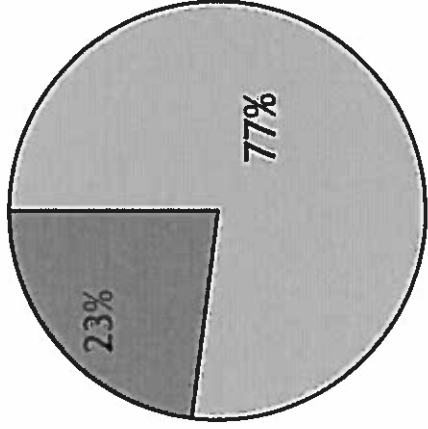


Prisoner Age Demographics

2009

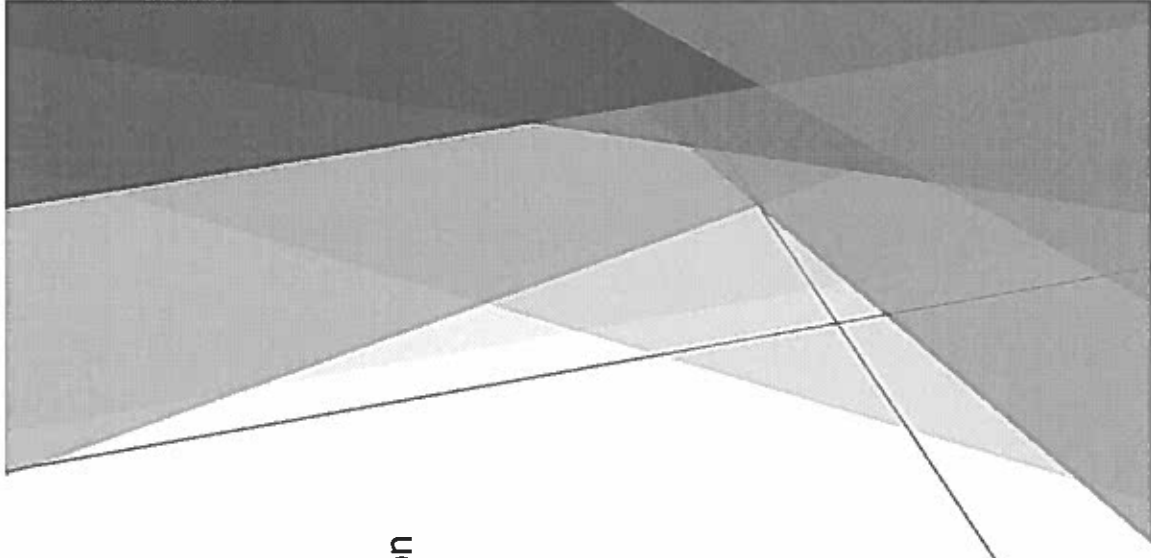


2016



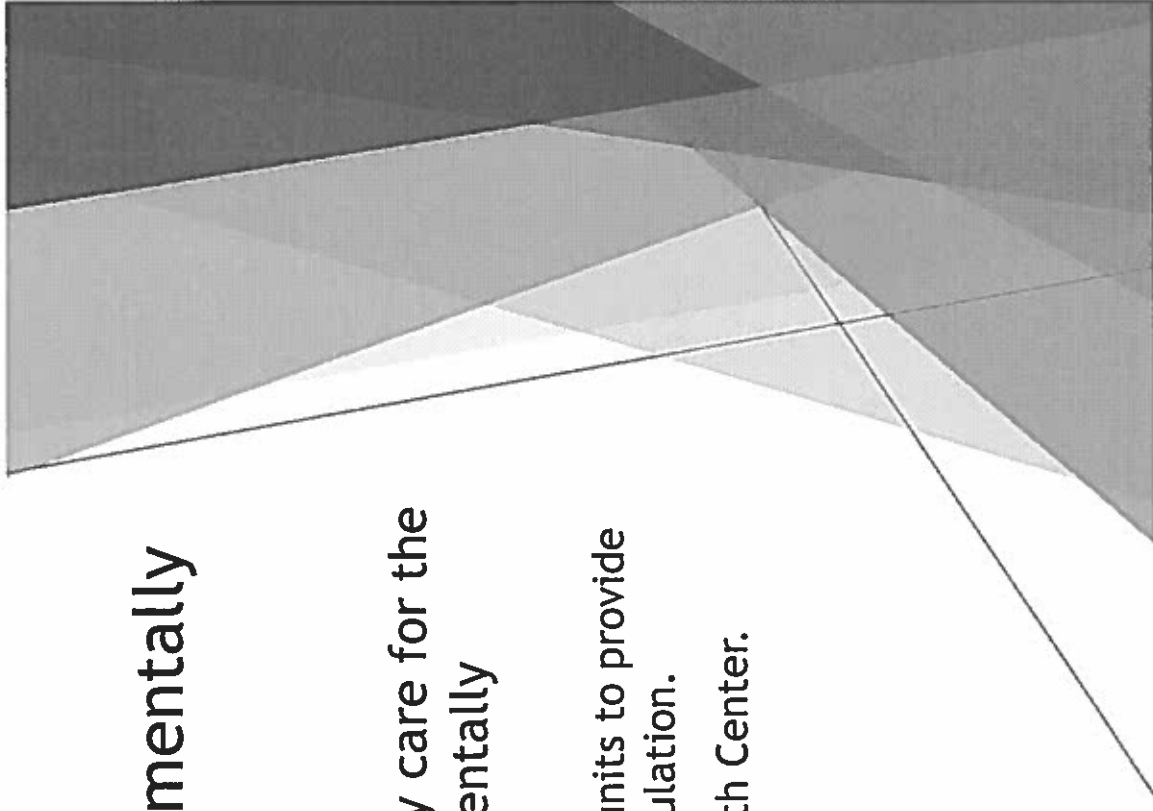
Medically Frail Population

- ▶ The needs of this population are higher than those of the general population for physical and/or mental health.
- ▶ The conditions displayed within this group include late-stage cancers, dementia, Alzheimer's, and others.
- ▶ Not all of the prisoners in the medically frail population have a "terminal" diagnosis, but for most, their need for treatment will continue throughout their time with the MDOC and in the community if they are eventually released.
- ▶ Many of these prisoners are not eligible for parole due to their sentences.



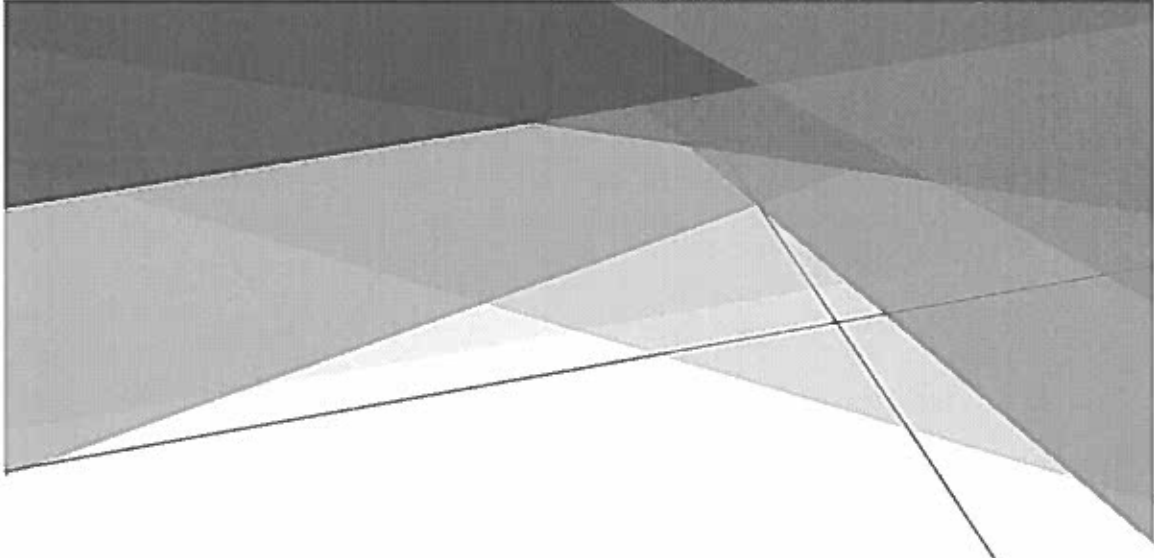
Medically Frail/Mentally Ill/Developmentally Disabled Populations

- ▶ The MDOC has taken steps to more effectively care for the medically fragile, mentally ill, and developmentally disabled prisoner populations, including:
 - ▶ The use of specialized units such as ASRP and RTP units to provide care for these prisoners outside of the general population.
 - ▶ The continued operation of the Duane Waters Health Center.
 - ▶ On-site dialysis treatment at DRC, WCC, and WHV.
 - ▶ On-site chemotherapy.



Medically Frail/Mentally Ill Paroles

- ▶ The MDOC works with an outside contractor (PCS) to arrange parole plans and services for medically and mentally fragile offenders who are **currently eligible for parole**.
- ▶ Over 800 offenders will receive this type of parole this year.
- ▶ Total expenditures for this program are roughly \$9m per year.
- ▶ This contract focuses on creating comprehensive parole/care plans for high needs offenders.
- ▶ These paroles often place offenders in more structured settings, such as Adult Foster Care Homes or Nursing Homes.



Challenges

- ▶ Many of these offenders exhibit complex mental and physical health needs.
- ▶ Supports in the community vary widely and some communities lack the resources that would allow these high needs offenders to successfully return.
- ▶ Locating suitable placements for certain offenders is difficult resulting in potential release delays.
- ▶ The parole board lacks jurisdiction over many prisoners in this condition, as they have not completed their minimum sentence.

