



An Introduction to the Michigan Department of Corrections

Kyle Kaminski,
OS Administrator/Legislative Liaison

March 2, 2023

Understanding the MDOC

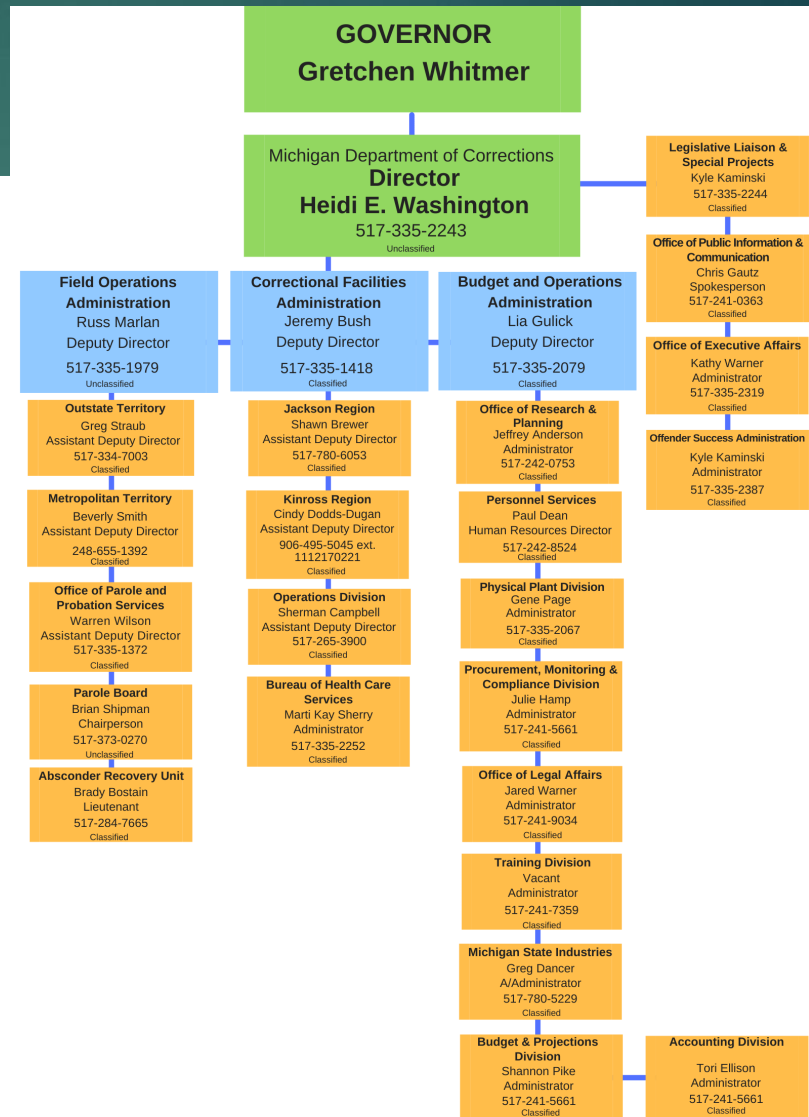
- ▶ The MDOC is more than just prisons.
 - ▶ Probation (33,108), Prison (32,374), and Parole (9,021)
- ▶ 26 Correctional Facilities, 1 Detention Center, 100+ Field Offices, ~12,000 employees.
 - ▶ Roughly ½ of MDOC employees are not engaged in direct custody functions within our prisons.
 - ▶ Educators, Healthcare Providers, Mental Health Providers, Field Agents, Offender Success Staff, Accountants, Food Service, etc.
- ▶ The Department touches every county within the state.

Understanding the MDOC's Structure

The MDOC is made up of 3 major administrations and an Executive Bureau.

While a large department in terms of employee count and geographic reach, the MDOC prides itself on maintaining a lean operating structure.

The MDOC is one of the few 24/7/365 operations in state government.



What is the Goal and Approach of the MDOC?

The MDOC is focused on creating individual success, not simply avoiding future criminal conduct.

The MDOC utilizes evidence-based practices and programs to address individual needs and reduce individual risk.

Programming is designed to help individuals understand their thoughts, feelings, and actions so that better, safer decisions can occur in the future.

In addition, the MDOC promotes participation in educational, job training, work readiness and other skill development opportunities with a goal of supporting self-sufficiency, success, and agency upon release.

Correctional Facilities Administration (CFA)

- ▶ Operates 26 prisons and 1 detention center.
- ▶ Facilities serve unique roles based on custody levels, programs, healthcare, and services.
- ▶ Responsible for custody and care of prisoners.
- ▶ Includes prisoner healthcare and mental health services.
- ▶ Largest administration within the MDOC.

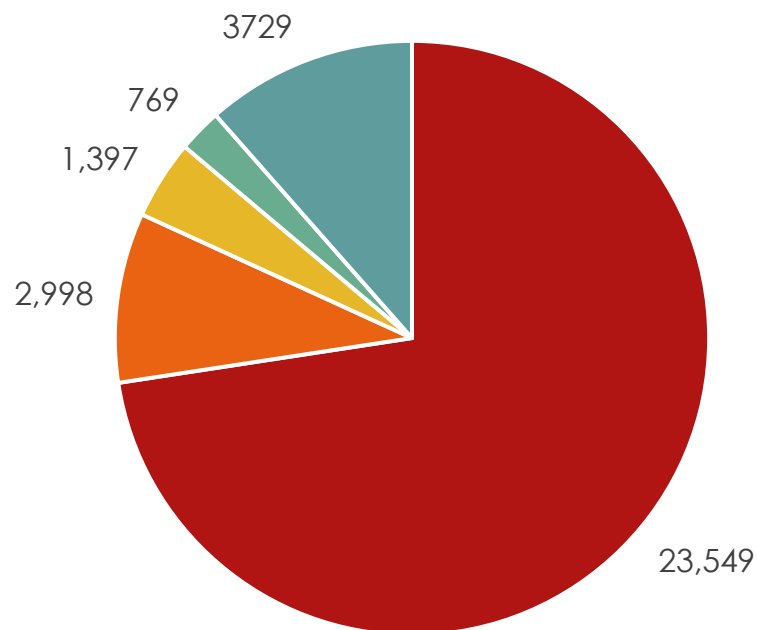
**Michigan Department of Corrections
Correctional Facilities Map**

As of November 2022



Parole Eligibility of Current Prison Population

Prison Population



- Have Not Served Minimum Sentence
- Parole Eligible, Not Yet Paroled
- Parole Violator Returned to Prison
- Parolable Lifer
- Non-Parolable Lifer


Budget and Operations Administration (BOA)

- ▶ Responsible for operations that support the entire department including: Budget, Research and Planning, Finance, Procurement, Contract Monitoring, Physical Plant, Legal Affairs, and Human Resources.
- ▶ Houses the Employee Wellness Unit.
- ▶ Manages staff recruitment and training.
- ▶ Houses the Michigan State Industries (MSI) program.


NOW HIRING!
Michigan Department of Corrections

BARAGA CORRECTIONAL FACILITY

OPEN INTERVIEWS
February 1, 2023 | 10:00 AM to 3:00 PM
Baraga Correctional Facility
13924 Wadaga Road
Baraga, MI 49908



Apply on-site! If interested in the Corrections Officer position, bring a change of clothes for the fitness test. T-shirt, shorts and athletic shoes are recommended.



Officers start @ \$20.08 per hour! New officers may be eligible for a one-time payment of \$1,500 upon successful completion of 13 continuous pay periods with the MDOC!

The Michigan Department of Corrections is currently hiring for officers, healthcare, and various other positions. Get paid while you train! These positions offer competitive pay and state benefits.

FOR MORE INFORMATION, EMAIL SALOMONJ@MICHIGAN.GOV
OR CALL 517- 249- 4119.

Field Operations Administration (FOA)



- ▶ Provides supervision of all parolees and felony probationers in the state of Michigan.
- ▶ Houses the Parole Board, which determines when prisoners will be granted liberty on parole after completing their minimum prison sentence.
- ▶ Operates a 24/7 electronic monitoring center.
- ▶ Includes the Absconder Recovery Unit, which is tasked with finding parole absconders in the community.
- ▶ Interfaces with the courts and local law enforcement to complete various public safety functions.

Probation vs. Parole

Probation is a court ordered period of supervision in the community. It may start immediately upon sentencing or after time in the county jail.

Individuals on probation are subject to terms of supervision established by the court, but that are overseen by MDOC Field Agents. The court determines the response to violations of probation.

The services/programming available to probationers are localized, due to the use of specialty courts, community corrections programming, etc.

Parole is a term of supervision after incarceration in a state prison. In most cases, parole can only begin after the completion of a prisoner's minimum sentence and only after granting of parole by the Michigan Parole Board.

Individuals on parole are supervised by MDOC Field Agents and violations of parole are addressed via MDOC processes.

Services for parolees are provided at a regional level by MDOC contractors.

Executive Bureau/Offender Success Administration (OSA)

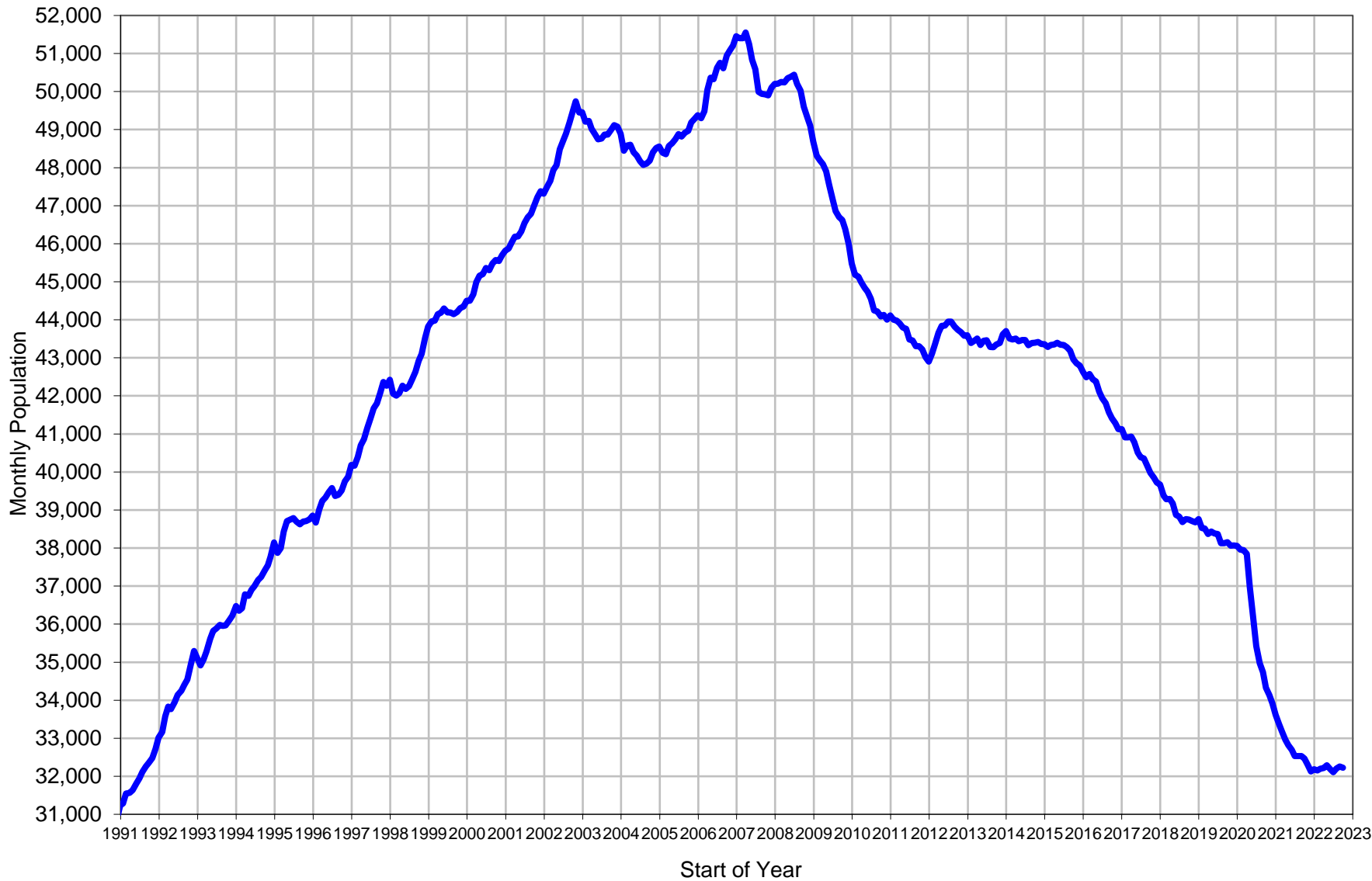
- ▶ The Executive Bureau houses functions including Public Information, Internal Affairs, Employee Discipline, Process Improvement and Legislative Affairs.
- ▶ OSA, within the Executive Bureau is focused on helping individuals address their risk/needs and find success in the community.
- ▶ Includes all prisoner education programs (Special Ed., Academic, Vocational, and Post-Secondary).
- ▶ Operates 3 Vocational Villages.
- ▶ Assists individuals with needs including vital documents, housing, and employment.
- ▶ Develops and manages core cognitive programs offered to prisoners.
- ▶ Works with community-based contractors to provide supports and programs to probationers and parolees.



DTE Foundation



Michigan Department of Corrections ACTUAL PRISON POPULATION SINCE 1991

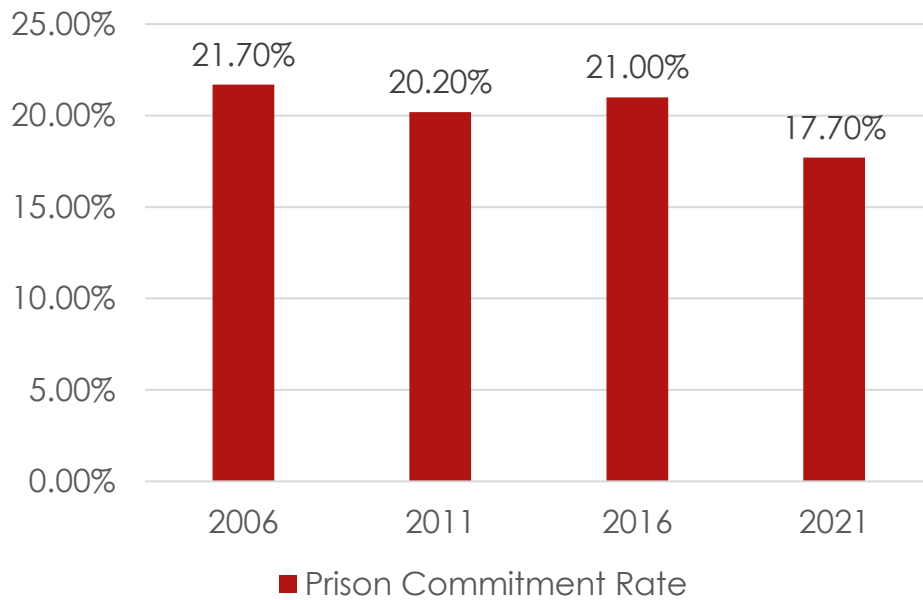


Pre-Trial/Probation

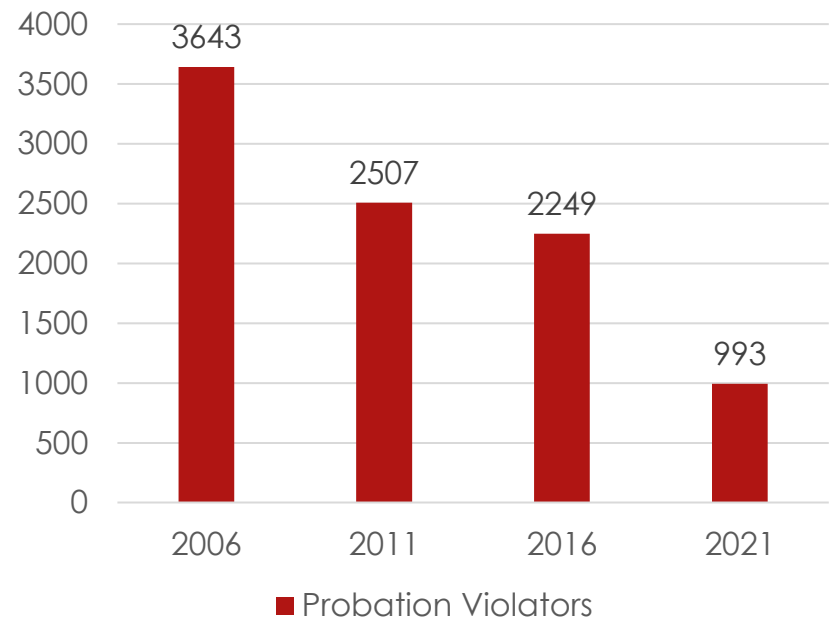
- ▶ Community Corrections – Voluntary program that allows counties or regions to receive state funding to operate programs and interventions targeting pre-trial and probation populations.
- ▶ Participating Community Corrections Advisory Boards (CCAB's) submit comprehensive plans to the State Community Corrections Board, which recommends a funding distribution for participating CCAB's.
- ▶ Residential Services Beds – Contracted residential beds where probationers or certain parolees can be placed to increase structure and provide access to programming.

Prison Commitment and Probation Violation Trends

Prison Commitment Rate



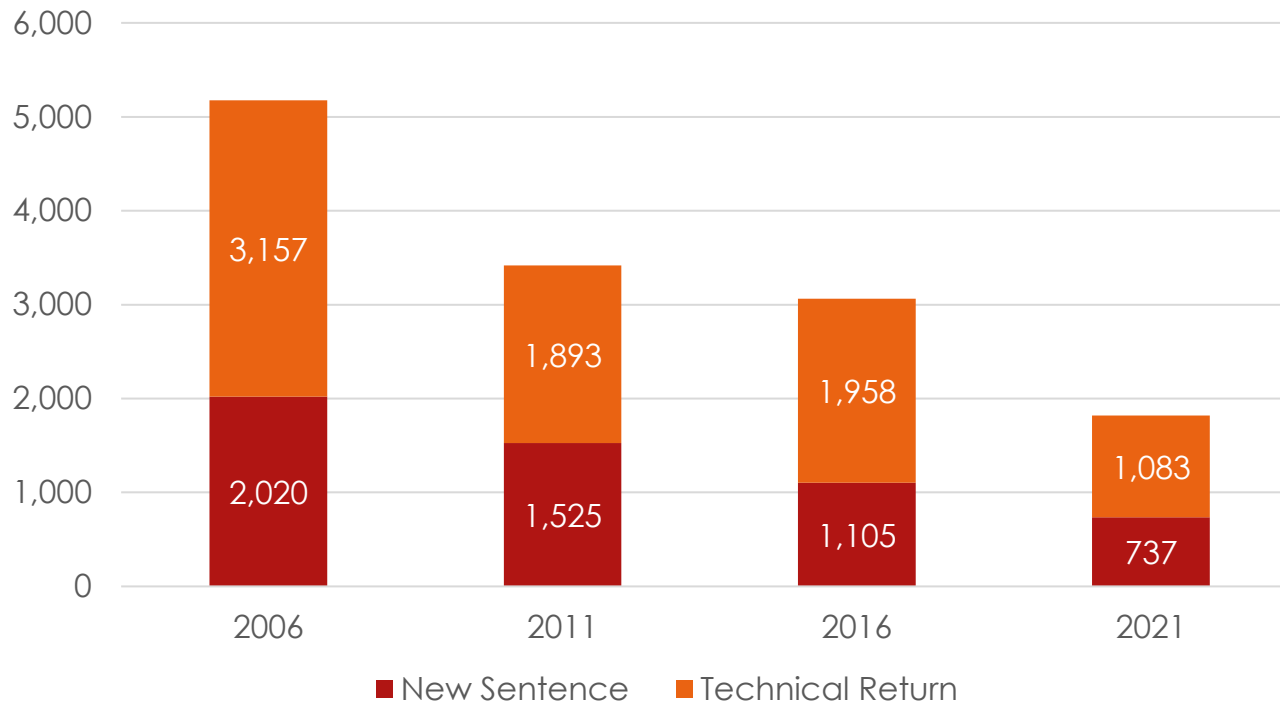
Probation Violators



Parole/Reentry

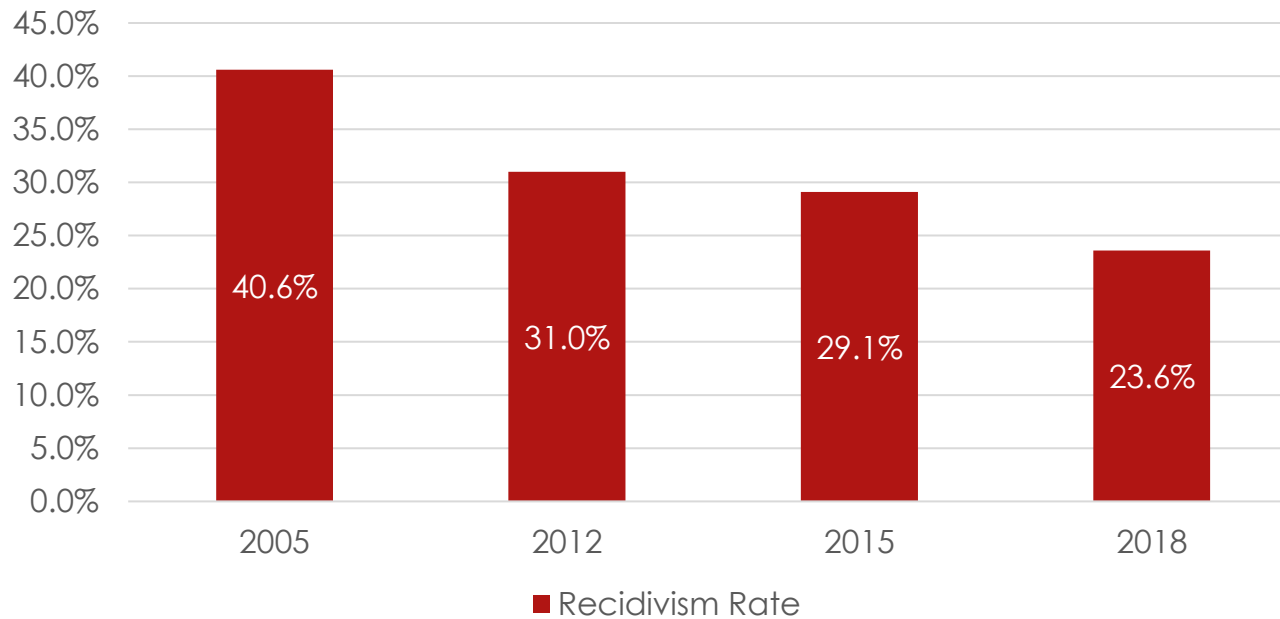
- ▶ In the MDOC, the focus on Reentry starts when individuals enter prison.
 - ▶ Evidence-Based Programming
 - ▶ Education
 - ▶ Skill-Building
 - ▶ Vital Documents
 - ▶ In-Reach Planning
- ▶ The MDOC contracts with regional Administrative Agencies that provide supports to eligible parolees in the community.
- ▶ Major service areas include:
 - ▶ Residential Stability
 - ▶ Job Placement/Employment Support
 - ▶ Social Supports
 - ▶ Health/Behavioral Health

Parole Returns to Prison



3-Year Recidivism Rate

Recidivism Rate by Release Year





Questions